


Product datasheet

Anti-EEF1A2 antibody ab153714

1 References 2 Images

Overview

Product name	Anti-EEF1A2 antibody
Description	Rabbit polyclonal to EEF1A2
Host species	Rabbit
Tested applications	Suitable for: WB
Species reactivity	Reacts with: Mouse, Human Predicted to work with: Rat, Rabbit, Chicken, Cow, Xenopus laevis, Xenopus tropicalis 
Immunogen	Recombinant fragment, corresponding to a region within amino acids 1-245 of Human EEF1A2 (UniProt ID: Q05639).
Positive control	293T, A431, H1299, HeLa, HepG2, MOLT4 and Raji cell lysates; Mouse brain tissue lysate

Properties

Form	Liquid
Storage instructions	Shipped at 4°C. Upon delivery aliquot. Store at -20°C or -80°C. Avoid freeze / thaw cycle.
Storage buffer	pH: 7.00 Preservative: 0.01% Thimerosal (merthiolate) Constituents: 1.21% Tris, 0.75% Glycine, 20% Glycerol
Purity	Immunogen affinity purified
Clonality	Polyclonal
Isotype	IgG

Applications

Our [Abpromise guarantee](#) covers the use of **ab153714** in the following tested applications.

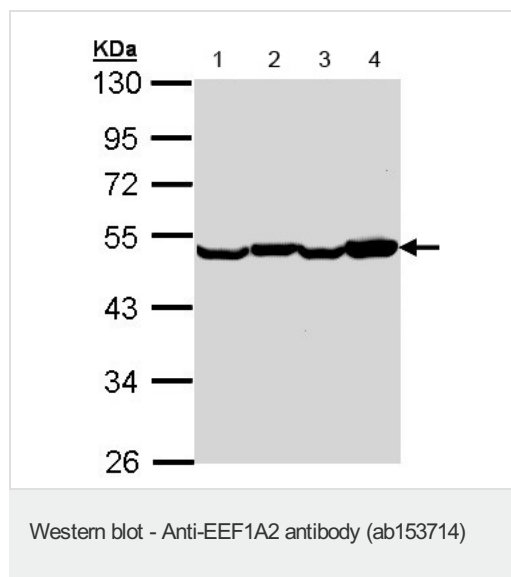
The application notes include recommended starting dilutions; optimal dilutions/concentrations should be determined by the end user.

Application	Abreviews	Notes
WB		1/500 - 1/3000. Predicted molecular weight: 50 kDa.

Target

Function	This protein promotes the GTP-dependent binding of aminoacyl-tRNA to the A-site of ribosomes during protein biosynthesis.
Tissue specificity	Brain, heart, and skeletal muscle.
Sequence similarities	Belongs to the GTP-binding elongation factor family. EF-Tu/EF-1A subfamily.
Cellular localization	Nucleus.

Images



All lanes : Anti-EEF1A2 antibody (ab153714) at 1/1000 dilution

Lane 1 : HeLa whole cell lysate

Lane 2 : HepG2 whole cell lysate

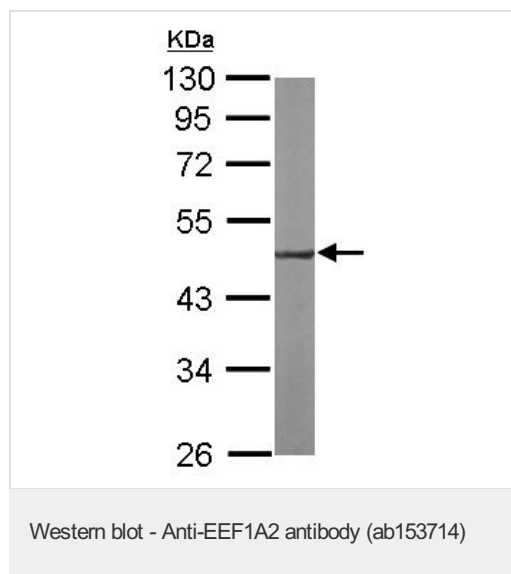
Lane 3 : MOLT4 whole cell lysate

Lane 4 : Raji whole cell lysate

Lysates/proteins at 30 µg per lane.

Predicted band size: 50 kDa

10% SDS PAGE



Anti-EEF1A2 antibody (ab153714) at 1/1000 dilution + Mouse brain tissue lysate at 50 µg

Predicted band size: 50 kDa

10% SDS PAGE

Please note: All products are "FOR RESEARCH USE ONLY. NOT FOR USE IN DIAGNOSTIC PROCEDURES"

Our Abpromise to you: Quality guaranteed and expert technical support

- Replacement or refund for products not performing as stated on the datasheet
- Valid for 12 months from date of delivery
- Response to your inquiry within 24 hours

- We provide support in Chinese, English, French, German, Japanese and Spanish
- Extensive multi-media technical resources to help you
- We investigate all quality concerns to ensure our products perform to the highest standards

If the product does not perform as described on this datasheet, we will offer a refund or replacement. For full details of the Abpromise, please visit <https://www.abcam.com/abpromise> or contact our technical team.

Terms and conditions

- Guarantee only valid for products bought direct from Abcam or one of our authorized distributors