


Product datasheet

Anti-EEF1A2 antibody ab235190

2 Images

Overview

<b>Product name</b>	Anti-EEF1A2 antibody
<b>Description</b>	Chicken polyclonal to EEF1A2
<b>Host species</b>	Chicken
<b>Tested applications</b>	<b>Suitable for:</b> WB, IHC-P
<b>Species reactivity</b>	<b>Reacts with:</b> Human <b>Predicted to work with:</b> Mouse, Rat, Rabbit, Cow 
<b>Immunogen</b>	Synthetic peptide. This information is considered to be commercially sensitive.
<b>Positive control</b>	WB: MCF7 nuclear extract. IHC-P: Human kidney tissue.

Properties

<b>Form</b>	Liquid
<b>Storage instructions</b>	Shipped at 4°C. Store at +4°C short term (1-2 weeks). Upon delivery aliquot. Store at -20°C long term. Avoid freeze / thaw cycle.
<b>Storage buffer</b>	pH: 7 Preservative: 0.01% Sodium azide Constituents: 0.03% Sodium phosphate, 0.87% Sodium chloride
<b>Purity</b>	IgY fraction
<b>Clonality</b>	Polyclonal
<b>Isotype</b>	IgY

Applications

Our [Abpromise guarantee](#) covers the use of **ab235190** in the following tested applications.

The application notes include recommended starting dilutions; optimal dilutions/concentrations should be determined by the end user.

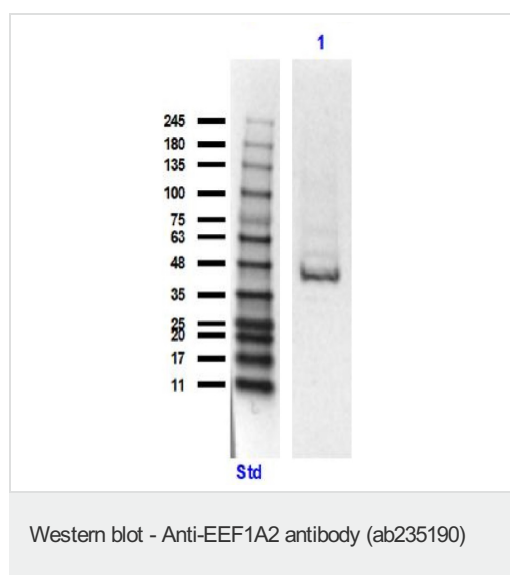
Application	Abreviews	Notes
WB		Use a concentration of 5 µg/ml. Predicted molecular weight: 50 kDa.

Application	Abreviews	Notes
IHC-P		1/100. Perform heat mediated antigen retrieval with citrate buffer pH 6 before commencing with IHC staining protocol.

## Target

<b>Function</b>	This protein promotes the GTP-dependent binding of aminoacyl-tRNA to the A-site of ribosomes during protein biosynthesis.
<b>Tissue specificity</b>	Brain, heart, and skeletal muscle.
<b>Sequence similarities</b>	Belongs to the GTP-binding elongation factor family. EF-Tu/EF-1A subfamily.
<b>Cellular localization</b>	Nucleus.

## Images

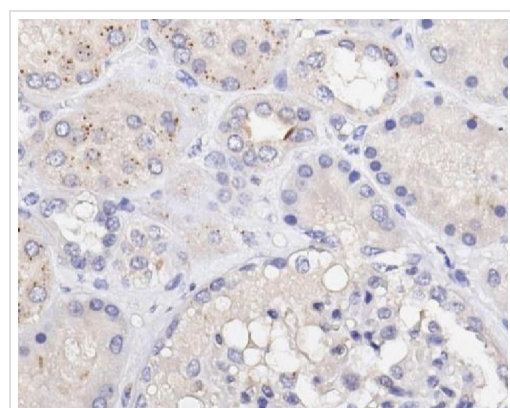


Anti-EEF1A2 antibody (ab235190) at 5 µg/ml + MCF7 (human breast adenocarcinoma cell line) nuclear extract at 35 µg

### Secondary

Goat anti-chicken IgG HRP at 1/5000 dilution

**Predicted band size:** 50 kDa



Immunohistochemistry (Formalin/PFA-fixed paraffin-embedded sections) - Anti-EEF1A2 antibody (ab235190)

Formalin-fixed, paraffin-embedded human kidney tissue stained for EEF1A2 using ab235190 at a 1/100 dilution (30mins at RT) in immunohistochemistry.

Secondary antibody used was an anti-chicken HRP (1/500, 20mins at RT).

Counterstained with hematoxylin.

HIER using citrate buffer for 20 mins.

**Image focused on renal tubular epithelium section.**

**Please note:** All products are "FOR RESEARCH USE ONLY. NOT FOR USE IN DIAGNOSTIC PROCEDURES"

### **Our Abpromise to you: Quality guaranteed and expert technical support**

---

- Replacement or refund for products not performing as stated on the datasheet
- Valid for 12 months from date of delivery
- Response to your inquiry within 24 hours
  
- We provide support in Chinese, English, French, German, Japanese and Spanish
- Extensive multi-media technical resources to help you
- We investigate all quality concerns to ensure our products perform to the highest standards

If the product does not perform as described on this datasheet, we will offer a refund or replacement. For full details of the Abpromise, please visit <https://www.abcam.com/abpromise> or contact our technical team.

### **Terms and conditions**

---

- Guarantee only valid for products bought direct from Abcam or one of our authorized distributors