

Product datasheet

Anti-EFCAB4A antibody [EPR13742] ab185223

Recombinant RabMAb

1 Image

Overview

Product name	Anti-EFCAB4A antibody [EPR13742]
Description	Rabbit monoclonal [EPR13742] to EFCAB4A
Host species	Rabbit
Tested applications	Suitable for: WB
Species reactivity	Reacts with: Mouse, Rat, Human
Immunogen	Recombinant fragment within Human EFCAB4A aa 250 to the C-terminus. The exact sequence is proprietary. Database link: Q8N4Y2
Positive control	Human pancreas, LnCaP and SW480 cell lysates.
General notes	

This product is a recombinant monoclonal antibody, which offers several advantages including:

- High batch-to-batch consistency and reproducibility
- Improved sensitivity and specificity
- Long-term security of supply
- Animal-free production

For more information [see here](#).

Our RabMAb[®] technology is a patented hybridoma-based technology for making rabbit monoclonal antibodies. For details on our patents, please refer to [RabMAb[®] patents](#).

Properties

Form	Liquid
Storage instructions	Shipped at 4°C. Store at +4°C short term (1-2 weeks). Upon delivery aliquot. Store at -20°C long term. Avoid freeze / thaw cycle.
Storage buffer	Preservative: 0.01% Sodium azide Constituents: 59% PBS, 40% Glycerol, 0.05% BSA
Purity	Protein A purified
Clonality	Monoclonal

Clone number EPR13742
Isotype IgG

Applications

Our [Abpromise guarantee](#) covers the use of **ab185223** in the following tested applications.

The application notes include recommended starting dilutions; optimal dilutions/concentrations should be determined by the end user.

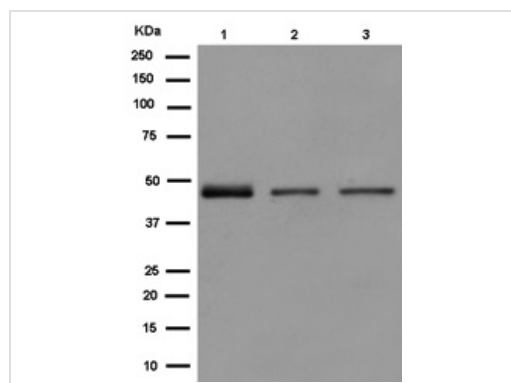
Application	Abreviews	Notes
WB		1/1000 - 1/2000. Detects a band of approximately 45 kDa (predicted molecular weight: 45 kDa).

Target

Function Plays a role in store-operated Ca(2+) entry (SOCE).

Sequence similarities Belongs to the EFCAB4 family.
 Contains 2 EF-hand domains.

Images



Western blot - Anti-EFCAB4A antibody [EPR13742] (ab185223)

All lanes : Anti-EFCAB4A antibody [EPR13742] (ab185223) at 1/1000 dilution

Lane 1 : Human pancreas lysate

Lane 2 : LnCaP cell lysate

Lane 3 : SW480 cell lysate

Lysates/proteins at 20 µg per lane.

Secondary

All lanes : Goat Anti-Rabbit IgG, (H+L), Peroxidase conjugated at 1/1000 dilution

Predicted band size: 45 kDa

Please note: All products are "FOR RESEARCH USE ONLY. NOT FOR USE IN DIAGNOSTIC PROCEDURES"

Our Abpromise to you: Quality guaranteed and expert technical support

- Replacement or refund for products not performing as stated on the datasheet
- Valid for 12 months from date of delivery

- Response to your inquiry within 24 hours
- We provide support in Chinese, English, French, German, Japanese and Spanish
- Extensive multi-media technical resources to help you
- We investigate all quality concerns to ensure our products perform to the highest standards

If the product does not perform as described on this datasheet, we will offer a refund or replacement. For full details of the Abpromise, please visit <https://www.abcam.com/abpromise> or contact our technical team.

Terms and conditions

- Guarantee only valid for products bought direct from Abcam or one of our authorized distributors