



Product datasheet

Anti-EGF antibody ab231103

2 Images

Overview

<b>Product name</b>	Anti-EGF antibody
<b>Description</b>	Rabbit polyclonal to EGF
<b>Host species</b>	Rabbit
<b>Tested applications</b>	<b>Suitable for:</b> WB
<b>Species reactivity</b>	<b>Reacts with:</b> Pig
<b>Immunogen</b>	<p>Recombinant fragment (His-tag) corresponding to Pig EGF aa 45-275. (Expressed in E.coli). Sequence:</p> <p>APFLIFSHGNSIFRIDLEGTNHEQLVADAGISVLMDFHY NEERMWVDLE RQLLQRVFLNGTRQEKVCNLEKNVSGMAINWINEELIW SNQQEGTITVTD MKGNNSRVLLSALKYPANVAVDPVERLMFWSSVVAG SLHRADVTGVEVRL LLETSEEIAAVSLDVLDKRLFWIQYNREGGSSRICSCDY DGGSVHFSKHL TQHNVFAMSLFGDHIFYSTWKKKTIWVANKH</p> <p>Database link: <a href="#">Q00968</a></p> <p style="text-align: right;"> <a href="#">Run BLAST with</a>       <a href="#">Run BLAST with</a></p>
<b>Positive control</b>	WB: Porcine uterus lysate; Recombinant porcine EGF protein.

Properties

<b>Form</b>	Liquid
<b>Storage instructions</b>	Shipped at 4°C. Store at +4°C short term (1-2 weeks). Upon delivery aliquot. Store at -20°C long term. Avoid freeze / thaw cycle.
<b>Storage buffer</b>	<p>pH: 7.40 Preservative: 0.02% Sodium azide Constituents: PBS, 50% Glycerol</p>
<b>Purity</b>	Immunogen affinity purified
<b>Purification notes</b>	ab231103 was purified by antigen-specific affinity chromatography followed by Protein A affinity chromatography.

<b>Clonality</b>	Polyclonal
<b>Isotype</b>	IgG

## Applications

Our [Abpromise guarantee](#) covers the use of **ab231103** in the following tested applications.

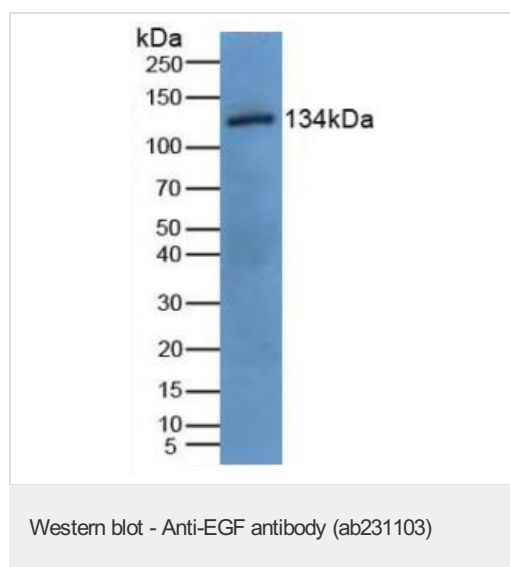
The application notes include recommended starting dilutions; optimal dilutions/concentrations should be determined by the end user.

Application	Abreviews	Notes
WB		Use a concentration of 0.5 - 2 µg/ml. Predicted molecular weight: 134 kDa.

## Target

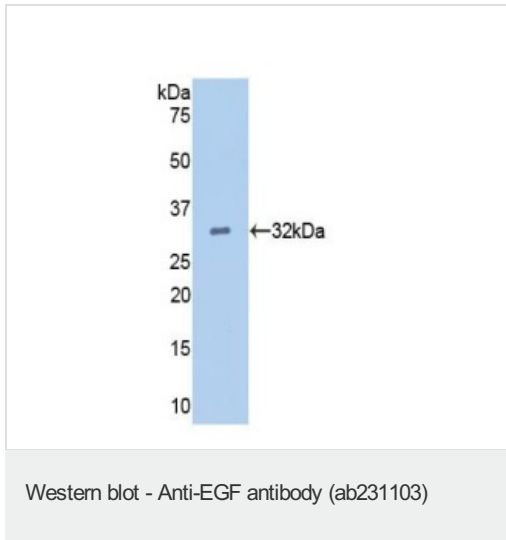
<b>Function</b>	EGF stimulates the growth of various epidermal and epithelial tissues in vivo and in vitro and of some fibroblasts in cell culture. Magnesiotropic hormone that stimulates magnesium reabsorption in the renal distal convoluted tubule via engagement of EGFR and activation of the magnesium channel TRPM6. Can induce neurite outgrowth in motoneurons of the pond snail <i>Lymnaea stagnalis</i> in vitro (PubMed:10964941).
<b>Tissue specificity</b>	Expressed in kidney, salivary gland, cerebrum and prostate.
<b>Involvement in disease</b>	Hypomagnesemia 4
<b>Sequence similarities</b>	Contains 9 EGF-like domains. Contains 9 LDL-receptor class B repeats.
<b>Post-translational modifications</b>	O-glycosylated with core 1-like and core 2-like glycans. It is uncertain if Ser-954 or Thr-955 is O-glycosylated. The modification here shows glycan heterogeneity: HexHexNAc (major) and Hex2HexNAc2 (minor).
<b>Cellular localization</b>	Membrane.

## Images



Anti-EGF antibody (ab231103) at 2 µg/ml + Porcine uterus lysate

**Predicted band size:** 134 kDa



Anti-EGF antibody (ab231103) at 2 µg/ml + Recombinant porcine EGF protein

**Predicted band size:** 134 kDa

**Please note:** All products are "FOR RESEARCH USE ONLY. NOT FOR USE IN DIAGNOSTIC PROCEDURES"

### Our Abpromise to you: Quality guaranteed and expert technical support

---

- Replacement or refund for products not performing as stated on the datasheet
- Valid for 12 months from date of delivery
- Response to your inquiry within 24 hours
- We provide support in Chinese, English, French, German, Japanese and Spanish
- Extensive multi-media technical resources to help you
- We investigate all quality concerns to ensure our products perform to the highest standards

If the product does not perform as described on this datasheet, we will offer a refund or replacement. For full details of the Abpromise, please visit <https://www.abcam.com/abpromise> or contact our technical team.

### Terms and conditions

---

- Guarantee only valid for products bought direct from Abcam or one of our authorized distributors