




Product datasheet

Anti-EHD2 antibody ab222888

3 Images

Overview

Product name	Anti-EHD2 antibody
Description	Rabbit polyclonal to EHD2
Host species	Rabbit
Tested applications	Suitable for: WB, IHC-P, ICC/IF
Species reactivity	Reacts with: Mouse, Human Predicted to work with: Rat 
Immunogen	<p>Recombinant fragment corresponding to Human EHD2 aa 401-543. Sequence:</p> <p>ELESTEVGVQGGAFEGTHMGPFVERGPDEAMEDGEEGS DDEAEWVVTKDK SKYDEIFYNLAPADGKLSGSKAKTWMVGTKLPNSVLGRW KLSDVDRDGM LDDEEFALASHLIEAKLEGHGLPANLPRRLVPPSKRRHKG SAE</p> <p>Database link: Q9NZN4</p> <p style="text-align: right;"> Run BLAST with  Run BLAST with</p>
Positive control	WB: HeLa whole cell lysate (ab150035); Mouse liver and kidney lysates. IHC-P: Human kidney tissue. ICC/IF: HeLa cells.
General notes	<p>Reproducibility is key to advancing scientific discovery and accelerating scientists' next breakthrough.</p> <p>Abcam is leading the way with our range of recombinant antibodies, knockout-validated antibodies and knockout cell lines, all of which support improved reproducibility.</p> <p>We are also planning to innovate the way in which we present recommended applications and species on our product datasheets, so that only applications & species that have been tested in our own labs, our suppliers or by selected trusted collaborators are covered by our Abpromise™ guarantee.</p> <p>In preparation for this, we have started to update the applications & species that this product is Abpromise guaranteed for.</p> <p>We are also updating the applications & species that this product has been “predicted to work with,” however this information is not covered by our Abpromise guarantee.</p> <p>Applications & species from publications and Abreviews that have not been tested in our own</p>

labs or in those of our suppliers are not covered by the Abpromise guarantee.

Please check that this product meets your needs before purchasing. If you have any questions, special requirements or concerns, please send us an inquiry and/or contact our Support team ahead of purchase. Recommended alternatives for this product can be found below, as well as customer reviews and Q&As.

Properties

Form	Liquid
Storage instructions	Shipped at 4°C. Store at +4°C short term (1-2 weeks). Upon delivery aliquot. Store at -20°C long term. Avoid freeze / thaw cycle.
Storage buffer	pH: 7.40 Constituents: 50% Glycerol (glycerin, glycerine), PBS, 0.03% Proclin 300
Purity	Protein G purified
Purification notes	Purity >95%.
Clonality	Polyclonal
Isotype	IgG

Applications

Our [Abpromise guarantee](#) covers the use of **ab222888** in the following tested applications.

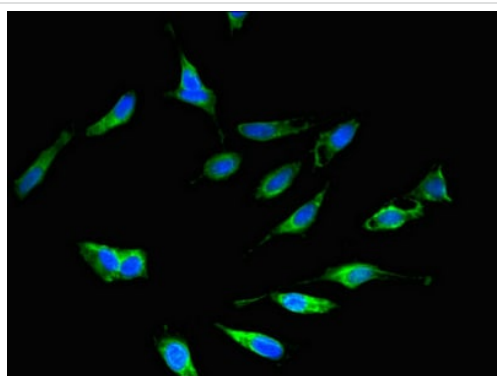
The application notes include recommended starting dilutions; optimal dilutions/concentrations should be determined by the end user.

Application	Abreviews	Notes
WB		1/500 - 1/5000. Detects a band of approximately 62, 47 kDa (predicted molecular weight: 61, 46 kDa).
IHC-P		1/20 - 1/200.
ICC/IF		1/50 - 1/200.

Target

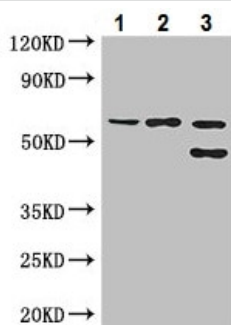
Function	Plays a role in membrane reorganization in response to nucleotide hydrolysis. Binds to liposomes and deforms them into tubules. Plays a role in membrane trafficking between the plasma membrane and endosomes. Important for the internalization of GLUT4. Required for normal fusion of myoblasts to skeletal muscle myotubes. Binds ATP; does not bind GTP.
Tissue specificity	Highly expressed in heart and moderately expressed in placenta, lung, and skeletal muscle.
Sequence similarities	Contains 1 EF-hand domain. Contains 1 EH domain.
Domain	The EH domain interacts with Asn-Pro-Phe (NPF) motifs of target proteins.
Cellular localization	Cell membrane. Endosome membrane. Colocalizes with GLUT4 in intracellular tubulovesicular structures that are associated with cortical F-actin.

Images



Immunocytochemistry/ Immunofluorescence - Anti-EHD2 antibody (ab222888)

HeLa (human epithelial cell line from cervix adenocarcinoma) cells stained for EHD2 (green) using ab222888 at 1/100 dilution in ICC/IF, followed by Alexa Fluor 488-conjugated Goat Anti-Rabbit IgG (H+L).



Western blot - Anti-EHD2 antibody (ab222888)

All lanes : Anti-EHD2 antibody (ab222888) at 1/500 dilution

Lane 1 : HeLa (human epithelial cell line from cervix adenocarcinoma) whole cell lysate

Lane 2 : Mouse liver lysate

Lane 3 : Mouse kidney lysate

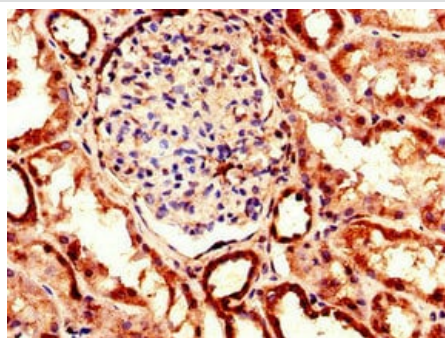
Secondary

All lanes : Goat polyclonal to rabbit IgG at 1/50000 dilution

Predicted band size: 61, 46 kDa

Observed band size: 47,62 kDa

[why is the actual band size different from the predicted?](#)



Immunohistochemistry (Formalin/PFA-fixed paraffin-embedded sections) - Anti-EHD2 antibody (ab222888)

Paraffin-embedded human kidney tissue stained for EHD2 using ab222888 at 1/100 dilution in immunohistochemical analysis.

Please note: All products are "FOR RESEARCH USE ONLY. NOT FOR USE IN DIAGNOSTIC PROCEDURES"

Our Abpromise to you: Quality guaranteed and expert technical support

- Replacement or refund for products not performing as stated on the datasheet
- Valid for 12 months from date of delivery
- Response to your inquiry within 24 hours

- We provide support in Chinese, English, French, German, Japanese and Spanish
- Extensive multi-media technical resources to help you
- We investigate all quality concerns to ensure our products perform to the highest standards

If the product does not perform as described on this datasheet, we will offer a refund or replacement. For full details of the Abpromise, please visit <https://www.abcam.com/abpromise> or contact our technical team.

Terms and conditions

- Guarantee only valid for products bought direct from Abcam or one of our authorized distributors