

Product datasheet

Anti-EHF antibody ab220113

2 Images

Overview

Product name	Anti-EHF antibody
Description	Rabbit polyclonal to EHF
Host species	Rabbit
Tested applications	Suitable for: ICC/IF, WB
Species reactivity	Reacts with: Human Predicted to work with: Mouse, Rat, Cow, Chimpanzee ▲
Positive control	RT-4 and U-251 MG cell lysates; Human tonsil lysate; A431 cells.

Properties

Form	Liquid
Storage instructions	Shipped at 4°C. Store at +4°C short term (1-2 weeks). Upon delivery aliquot. Store at -20°C long term. Avoid freeze / thaw cycle.
Storage buffer	pH: 7.2 Preservative: 0.02% Sodium azide Constituents: 40% Glycerol, 59% PBS
Purity	Immunogen affinity purified
Clonality	Polyclonal
Isotype	IgG

Applications

Our [Abpromise guarantee](#) covers the use of **ab220113** in the following tested applications.

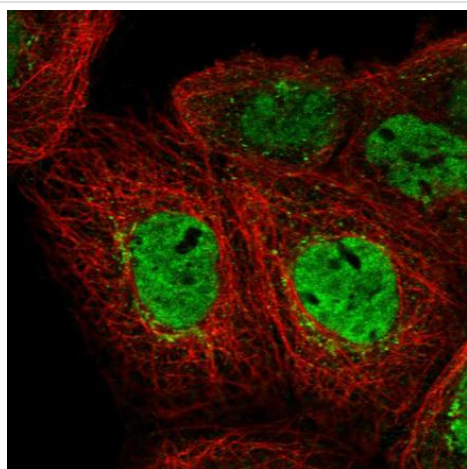
The application notes include recommended starting dilutions; optimal dilutions/concentrations should be determined by the end user.

Application	Abreviews	Notes
ICC/IF		Use a concentration of 1 - 4 µg/ml. Fixation/Permeabilization: PFA/Triton X-100.
WB		1/500 - 1/1000. Predicted molecular weight: 34 kDa.

Target

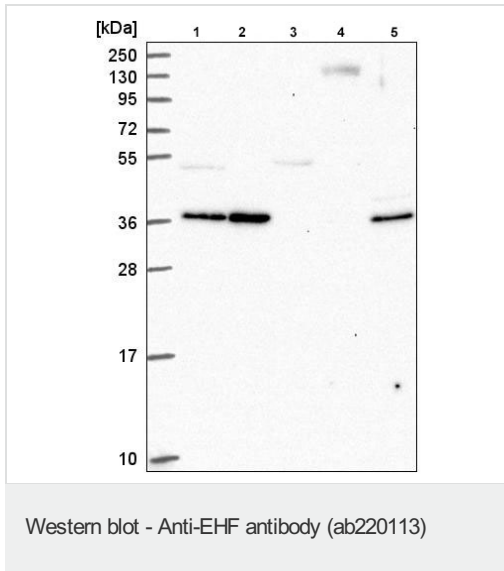
Function	Transcriptional activator that may play a role in regulating epithelial cell differentiation and proliferation. May act as a repressor for a specific subset of ETS/AP-1-responsive genes and as a modulator of the nuclear response to mitogen-activated protein kinase signaling cascades. Binds to DNA sequences containing the consensus nucleotide core sequence GGAA. Involved in regulation of TNFRSF10B/DR5 expression through Ets-binding sequences on the TNFRSF10B/DR5 promoter. May contribute to development and carcinogenesis by acting as a tumor suppressor gene or anti-oncogene.
Tissue specificity	Expressed exclusively in tissues with a high content of epithelial cells. Highly expressed in salivary gland, mammary gland, prostate, and lung. Weakly expressed in kidney and colon. Not detected in heart, brain, placenta, liver, skeletal muscle, spleen, thymus, testis, ovary, small intestine or peripheral blood leukocytes.
Sequence similarities	Belongs to the ETS family. Contains 1 ETS DNA-binding domain. Contains 1 PNT (pointed) domain.
Domain	The PNT domain acts as a transcriptional activator.
Cellular localization	Nucleus.

Images



Immunofluorescent analysis of PFA-fixed, Triton X-100 permeabilized A431 cells labeling EHF with ab220113 at 4 µg/ml (green).

Immunocytochemistry/ Immunofluorescence - Anti-EHF antibody (ab220113)



All lanes : Anti-EHF antibody (ab220113) at 1/500 dilution

Lane 1 : RT-4 cell lysate

Lane 2 : U-251 MG cell lysate

Lane 3 : Human plasma

Lane 4 : Human liver lysate

Lane 5 : Human tonsil lysate

Predicted band size: 34 kDa

Please note: All products are "FOR RESEARCH USE ONLY. NOT FOR USE IN DIAGNOSTIC PROCEDURES"

Our Abpromise to you: Quality guaranteed and expert technical support

- Replacement or refund for products not performing as stated on the datasheet
- Valid for 12 months from date of delivery
- Response to your inquiry within 24 hours
- We provide support in Chinese, English, French, German, Japanese and Spanish
- Extensive multi-media technical resources to help you
- We investigate all quality concerns to ensure our products perform to the highest standards

If the product does not perform as described on this datasheet, we will offer a refund or replacement. For full details of the Abpromise, please visit <https://www.abcam.com/abpromise> or contact our technical team.

Terms and conditions

- Guarantee only valid for products bought direct from Abcam or one of our authorized distributors