


Product datasheet

Anti-EHHADH antibody ab123490

2 Images

Overview

Product name	Anti-EHHADH antibody
Description	Rabbit polyclonal to EHHADH
Host species	Rabbit
Tested applications	Suitable for: WB, IP
Species reactivity	Reacts with: Human Predicted to work with: Chimpanzee, Gorilla, Orangutan 
Immunogen	Synthetic peptide, corresponding to a region within amino acids 673-723 of Human EHHADH using the numbering given in entry NP_001957.2.
Positive control	Whole cell lysate from 293T, Jurkat, HeLa
General notes	<p>Reproducibility is key to advancing scientific discovery and accelerating scientists' next breakthrough.</p> <p>Abcam is leading the way with our range of recombinant antibodies, knockout-validated antibodies and knockout cell lines, all of which support improved reproducibility.</p> <p>We are also planning to innovate the way in which we present recommended applications and species on our product datasheets, so that only applications & species that have been tested in our own labs, our suppliers or by selected trusted collaborators are covered by our Abpromise™ guarantee.</p> <p>In preparation for this, we have started to update the applications & species that this product is Abpromise guaranteed for.</p> <p>We are also updating the applications & species that this product has been “predicted to work with,” however this information is not covered by our Abpromise guarantee.</p> <p>Applications & species from publications and Abreviews that have not been tested in our own labs or in those of our suppliers are not covered by the Abpromise guarantee.</p> <p>Please check that this product meets your needs before purchasing. If you have any questions, special requirements or concerns, please send us an inquiry and/or contact our Support team ahead of purchase. Recommended alternatives for this product can be found below, as well as customer reviews and Q&As.</p>

Properties

Form	Liquid
-------------	--------

Storage instructions	Shipped at 4°C. Upon delivery aliquot and store at -20°C. Avoid freeze / thaw cycles.
Storage buffer	pH: 7.00 Preservative: 0.09% Sodium azide Constituent: 99% Tris citrate/phosphate
	pH 7 to 8
Purity	Immunogen affinity purified
Clonality	Polyclonal
Isotype	IgG

Applications

Our [Abpromise guarantee](#) covers the use of **ab123490** in the following tested applications.

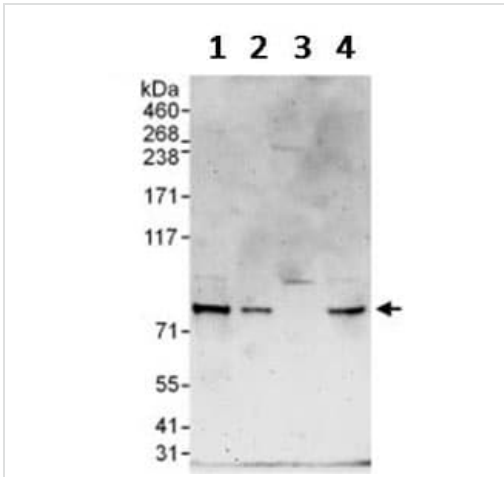
The application notes include recommended starting dilutions; optimal dilutions/concentrations should be determined by the end user.

Application	Abreviews	Notes
WB		1/500 - 1/2500. Predicted molecular weight: 79 kDa.
IP		Use at 2-10 µg/mg of lysate.

Target

Tissue specificity	Liver and kidney. Lower amounts seen in the brain.
Pathway	Lipid metabolism; fatty acid beta-oxidation.
Sequence similarities	In the N-terminal section; belongs to the enoyl-CoA hydratase/isomerase family. In the C-terminal section; belongs to the 3-hydroxyacyl-CoA dehydrogenase family.
Post-translational modifications	Acetylated, leading to enhanced enzyme activity. Acetylation is enhanced by up to 80% after treatment either with trichostin A (TSA) or with nicotinamide (NAM) with highest increase on Lys-346. Acetylation and enzyme activity increased by about 1.5% on addition of fatty acids.
Cellular localization	Peroxisome.

Images



Western blot - Anti-EHHADH antibody (ab123490)

All lanes : Anti-EHHADH antibody (ab123490) at 0.4 µg/ml

Lane 1 : HeLa whole cell lysate at 50 µg

Lane 2 : HeLa whole cell lysate at 15 µg

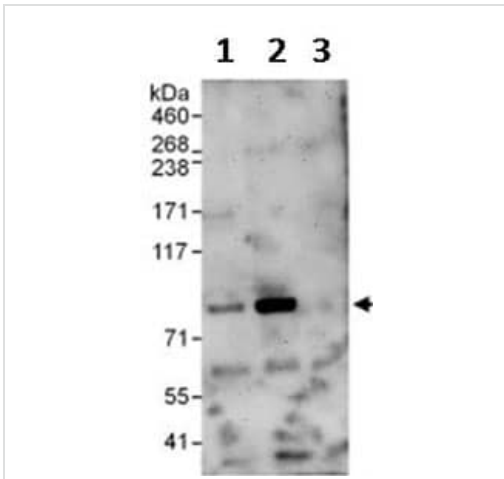
Lane 3 : 293T whole cell lysate at 50 µg

Lane 4 : Jurkat whole cell lysate at 50 µg

Developed using the ECL technique.

Predicted band size: 79 kDa

Exposure time: 3 minutes



Immunoprecipitation - Anti-EHHADH antibody (ab123490)

Lane 1: Immunoprecipitation from 293T whole cell lysate (1 mg for IP, 20% of IP loaded), using an antibody which recognized an upstream epitope of EHHADH.

Lane 2: Detection of Human EHHADH by Immunoprecipitation from 293T whole cell lysate (1 mg for IP, 20% of IP loaded), using ab123490 at 6 µg/mg lysate for IP.

Lane 3: Immunoprecipitation from 293T whole cell lysate (1 mg for IP, 20% of IP loaded), using Control IgG.

Subsequent Western blot detection used ab123490 at 1 µg/ml.

Detection: Chemiluminescence with an exposure time of 3 minutes.

Please note: All products are "FOR RESEARCH USE ONLY. NOT FOR USE IN DIAGNOSTIC PROCEDURES"

Our Abpromise to you: Quality guaranteed and expert technical support

- Replacement or refund for products not performing as stated on the datasheet

- Valid for 12 months from date of delivery
- Response to your inquiry within 24 hours

- We provide support in Chinese, English, French, German, Japanese and Spanish
- Extensive multi-media technical resources to help you
- We investigate all quality concerns to ensure our products perform to the highest standards

If the product does not perform as described on this datasheet, we will offer a refund or replacement. For full details of the Abpromise, please visit <https://www.abcam.com/abpromise> or contact our technical team.

Terms and conditions

- Guarantee only valid for products bought direct from Abcam or one of our authorized distributors