


Product datasheet

Anti-eIF-6 antibody ab109593

2 Images

Overview

<b>Product name</b>	Anti-eIF-6 antibody
<b>Description</b>	Rabbit polyclonal to eIF-6
<b>Host species</b>	Rabbit
<b>Tested applications</b>	<b>Suitable for:</b> WB, IP
<b>Species reactivity</b>	<b>Reacts with:</b> Mouse, Human <b>Predicted to work with:</b> Rat, Sheep, Rabbit, Horse, Guinea pig, Cow, Dog, Pig, Chimpanzee, Rhesus monkey, Gorilla, Catfish, Rainbow trout, Orangutan 
<b>Immunogen</b>	Synthetic peptide corresponding to Human eIF-6 aa 150-200.
<b>Positive control</b>	HeLa or NIH3T3 whole cell lysate
<b>General notes</b>	Previously labelled as Integrin beta 4 binding protein.

Reproducibility is key to advancing scientific discovery and accelerating scientists' next breakthrough.

Abcam is leading the way with our range of recombinant antibodies, knockout-validated antibodies and knockout cell lines, all of which support improved reproducibility.

We are also planning to innovate the way in which we present recommended applications and species on our product datasheets, so that only applications & species that have been tested in our own labs, our suppliers or by selected trusted collaborators are covered by our Abpromise™ guarantee.

In preparation for this, we have started to update the applications & species that this product is Abpromise guaranteed for.

We are also updating the applications & species that this product has been “predicted to work with,” however this information is not covered by our Abpromise guarantee.

Applications & species from publications and Abreviews that have not been tested in our own labs or in those of our suppliers are not covered by the Abpromise guarantee.

Please check that this product meets your needs before purchasing. If you have any questions, special requirements or concerns, please send us an inquiry and/or contact our Support team ahead of purchase. Recommended alternatives for this product can be found below, as well as customer reviews and Q&As.

Properties

<b>Form</b>	Liquid
<b>Storage instructions</b>	Shipped at 4°C. Upon delivery aliquot and store at -20°C. Avoid freeze / thaw cycles.
<b>Storage buffer</b>	pH: 7 Preservative: 0.09% Sodium azide Constituent: Tris citrate/phosphate
<b>Purity</b>	Immunogen affinity purified
<b>Clonality</b>	Polyclonal
<b>Isotype</b>	IgG

## Applications

Our [Abpromise guarantee](#) covers the use of **ab109593** in the following tested applications.

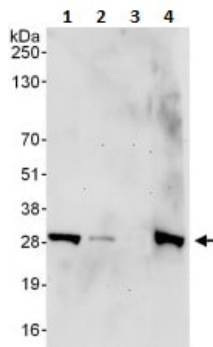
The application notes include recommended starting dilutions; optimal dilutions/concentrations should be determined by the end user.

Application	Abreviews	Notes
WB		1/2000 - 1/10000. Predicted molecular weight: 27 kDa.
IP		Use at 2-5 µg/mg of lysate.

## Target

<b>Function</b>	Binds to the 60S ribosomal subunit and prevents its association with the 40S ribosomal subunit to form the 80S initiation complex in the cytoplasm. May behave as a stimulatory translation initiation factor downstream insulin/growth factors. Is also involved in ribosome biogenesis. Associates with pre-60S subunits in the nucleus and is involved in its nuclear export. Cytoplasmic release of TIF6 from 60S subunits and nuclear relocalization is promoted by a RACK1 (GNB2L1)-dependent protein kinase C activity.
<b>Tissue specificity</b>	Expressed at very high levels in colon carcinoma with lower levels in normal colon and ileum and lowest levels in kidney and muscle (at protein level).
<b>Sequence similarities</b>	Belongs to the eIF-6 family.
<b>Post-translational modifications</b>	Phosphorylation at Ser-174 and Ser-175 promotes nuclear export.
<b>Cellular localization</b>	Cytoplasm. Nucleus > nucleolus. Shuttles between cytoplasm and nucleus/nucleolus.

## Images



Western blot - Anti-eIF-6 antibody (ab109593)

**All lanes :** Anti-eIF-6 antibody (ab109593) at 0.1 µg/ml

**Lane 1 :** HeLa whole cell lysate at 50 µg

**Lane 2 :** HeLa whole cell lysate at 15 µg

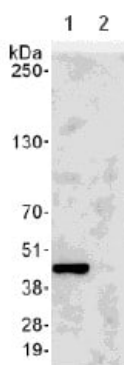
**Lane 3 :** HeLa whole cell lysate at 5 µg

**Lane 4 :** NIH3T3 whole cell lysate at 50 µg

Developed using the ECL technique.

**Predicted band size:** 27 kDa

**Exposure time:** 3 minutes



Immunoprecipitation - Anti-eIF-6 antibody (ab109593)

Detection of eIF-6 by Western Blot of Immunoprecipitate.

Lane 1: ab109593 at 1µg/ml staining eIF-6 in HeLa whole cell lysate immunoprecipitated using ab109593 at 6µg/mg lysate (1 mg/IP; 20% of IP loaded/lane).

Lane 2: Control IgG

Detection: Chemiluminescence with exposure time of 10 seconds.

**Please note:** All products are "FOR RESEARCH USE ONLY. NOT FOR USE IN DIAGNOSTIC PROCEDURES"

### Our Abpromise to you: Quality guaranteed and expert technical support

- Replacement or refund for products not performing as stated on the datasheet
- Valid for 12 months from date of delivery
- Response to your inquiry within 24 hours
- We provide support in Chinese, English, French, German, Japanese and Spanish
- Extensive multi-media technical resources to help you
- We investigate all quality concerns to ensure our products perform to the highest standards

If the product does not perform as described on this datasheet, we will offer a refund or replacement. For full details of the Abpromise, please visit <https://www.abcam.com/abpromise> or contact our technical team.

## Terms and conditions

---

- Guarantee only valid for products bought direct from Abcam or one of our authorized distributors