

## Product datasheet

# Anti-eIF2A antibody ab235147

3 Images

### Overview

---

<b>Product name</b>	Anti-eIF2A antibody
<b>Description</b>	Rabbit polyclonal to eIF2A
<b>Host species</b>	Rabbit
<b>Tested applications</b>	<b>Suitable for:</b> ICC/IF, WB
<b>Species reactivity</b>	<b>Reacts with:</b> Human
<b>Immunogen</b>	Synthetic peptide. This information is considered to be commercially sensitive.
<b>Positive control</b>	WB: eIF2A human protein over HEK-293 expressing lysate; Daudi and HeLa whole cell lysate. ICC/IF: HeLa cells.

### General notes

Reproducibility is key to advancing scientific discovery and accelerating scientists' next breakthrough.

Abcam is leading the way with our range of recombinant antibodies, knockout-validated antibodies and knockout cell lines, all of which support improved reproducibility.

We are also planning to innovate the way in which we present recommended applications and species on our product datasheets, so that only applications & species that have been tested in our own labs, our suppliers or by selected trusted collaborators are covered by our Abpromise™ guarantee.

In preparation for this, we have started to update the applications & species that this product is Abpromise guaranteed for.

We are also updating the applications & species that this product has been “predicted to work with,” however this information is not covered by our Abpromise guarantee.

Applications & species from publications and Abreviews that have not been tested in our own labs or in those of our suppliers are not covered by the Abpromise guarantee.

Please check that this product meets your needs before purchasing. If you have any questions, special requirements or concerns, please send us an inquiry and/or contact our Support team ahead of purchase. Recommended alternatives for this product can be found below, as well as customer reviews and Q&As.

### Properties

---

<b>Form</b>	Liquid
<b>Storage instructions</b>	Shipped at 4°C. Store at +4°C short term (1-2 weeks). Upon delivery aliquot. Store at -20°C long

term. Avoid freeze / thaw cycle.

**Storage buffer**

Preservative: 0.01% Sodium azide

Constituent: PBS

**Purity**

Affinity purified

**Clonality**

Polyclonal

**Isotype**

IgG

**Applications**

Our [Abpromise guarantee](#) covers the use of **ab235147** in the following tested applications.

The application notes include recommended starting dilutions; optimal dilutions/concentrations should be determined by the end user.

Application	Abreviews	Notes
ICC/IF		Use a concentration of 5 µg/ml.
WB		1/1000. Predicted molecular weight: 65 kDa.

**Target**

**Function**

Functions in the early steps of protein synthesis of a small number of specific mRNAs. Acts by directing the binding of methionyl-tRNAi to 40S ribosomal subunits. In contrast to the eIF-2 complex, it binds methionyl-tRNAi to 40 S subunits in a codon-dependent manner, whereas the eIF-2 complex binds methionyl-tRNAi to 40 S subunits in a GTP-dependent manner. May act by impinging the expression of specific proteins.

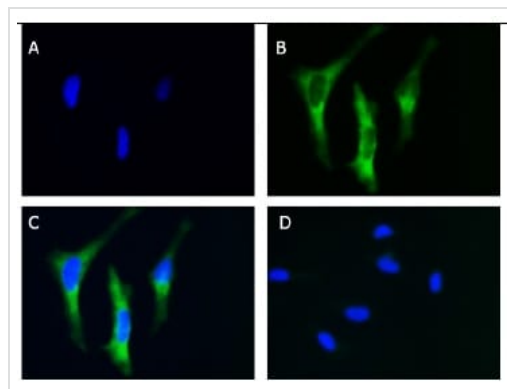
**Tissue specificity**

Widely expressed. Expressed at higher level in pancreas, heart, brain and placenta.

**Sequence similarities**

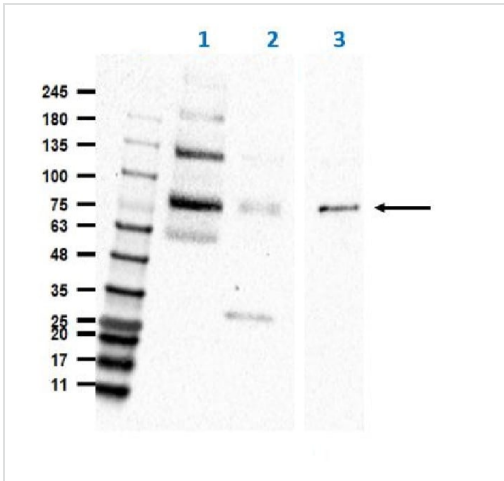
Belongs to the WD repeat EIF2A family.  
Contains 3 WD repeats.

**Images**



4% paraformaldehyde-fixed, 0.3% Triton X-100 permeabilized HeLa (human epithelial cell line from cervix adenocarcinoma) whole cell lysate labeling eIF2A using ab235147 at 5 µg/mL overnight at 4°C in ICC/IF analysis. Anti-Goat IgG DyLight™ 488 Conjugated Preadsorbed was used as the secondary antibody at 5 µg/mL for 1 hour at room temperature.

Immunocytochemistry/ Immunofluorescence - Anti-eIF2A antibody (ab235147)



Western blot - Anti-eIF2A antibody (ab235147)

**All lanes :** Anti-eIF2A antibody (ab235147) at 5 µg/ml

**Lane 1 :** Daudi whole cell lysate at 35 µg

**Lane 2 :** MCF7 whole cell lysate at 35 µg

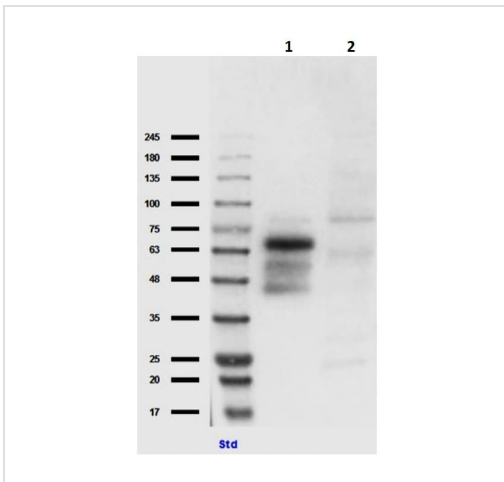
**Lane 3 :** HeLa whole cell lysate

**Secondary**

**All lanes :** Donkey anti-Goat HRP at 1/40000 dilution

**Predicted band size:** 65 kDa

**Exposure time:** 35 seconds



Western blot - Anti-eIF2A antibody (ab235147)

**All lanes :** Anti-eIF2A antibody (ab235147) at 1/1000 dilution

**Lane 1 :** eIF2A human protein over HEK293 expressing lysate

**Lane 2 :** HEK293 lysate (empty vector)

**Secondary**

**All lanes :** Donkey Fab2 anti-Goat HRP at 1/70000 dilution

**Predicted band size:** 65 kDa

**Exposure time:** 15 seconds

**Please note:** All products are "FOR RESEARCH USE ONLY. NOT FOR USE IN DIAGNOSTIC PROCEDURES"

### Our Abpromise to you: Quality guaranteed and expert technical support

- Replacement or refund for products not performing as stated on the datasheet
- Valid for 12 months from date of delivery
- Response to your inquiry within 24 hours
- We provide support in Chinese, English, French, German, Japanese and Spanish
- Extensive multi-media technical resources to help you
- We investigate all quality concerns to ensure our products perform to the highest standards

If the product does not perform as described on this datasheet, we will offer a refund or replacement. For full details of the Abpromise, please visit <https://www.abcam.com/abpromise> or contact our technical team.

### Terms and conditions

- Guarantee only valid for products bought direct from Abcam or one of our authorized distributors