




Product datasheet

Anti-EIF2B1 antibody ab229704

3 Images

Overview

Product name	Anti-EIF2B1 antibody
Description	Rabbit polyclonal to EIF2B1
Host species	Rabbit
Tested applications	Suitable for: IHC-P, WB
Species reactivity	Reacts with: Mouse, Human Predicted to work with: Rat, Cow, Cynomolgus monkey, Orangutan 
Immunogen	Recombinant full length protein corresponding to Human EIF2B1 aa 1-305. Sequence: MDDKELIEYFKSQMKEDPDMSAVAAIRTLLEFLKRDK GETIQGLRANLT SAIETLCGVDSSVAVSSGGELFLRFISLASLEYSYDYSK CKKIMIERGELF LRRISLSRNKIADLCHTFIKDGATILTHAYSRVLRVLEA AVAAKKRFSV YVTESQPDLSGKKMAKALCHLNVPVTVVLDAAVGYM EKADLVIVGAEGV VENGGIINKIGTNQMAVCAKAQNKPFYVVAESFKFVRL FPLNQDVPDKF KYKADTLKVAQTGQDLKEEHPWVDYTAPSLITLLFTDL GVLTPSAVSEDEL IKLYL Database link: Q14232  Run BLAST with  Run BLAST with
Positive control	WB: MCF7, K562, Jurkat and A431 whole cell lysates; Mouse liver and brain tissue lysates. IHC-P: Human prostate cancer and breast cancer tissues.

Properties

Form	Liquid
Storage instructions	Shipped at 4°C. Store at +4°C short term (1-2 weeks). Upon delivery aliquot. Store at -20°C long term. Avoid freeze / thaw cycle.
Storage buffer	pH: 7.3

Preservative: 0.02% Sodium azide

Constituents: PBS, 50% Glycerol

Purity

Immunogen affinity purified

Clonality

Polyclonal

Isotype

IgG

Applications

Our [Abpromise guarantee](#) covers the use of **ab229704** in the following tested applications.

The application notes include recommended starting dilutions; optimal dilutions/concentrations should be determined by the end user.

Application	Abreviews	Notes
IHC-P		1/20 - 1/200.
WB		1/1000 - 1/5000. Predicted molecular weight: 34 kDa.

Target

Function

Catalyzes the exchange of eukaryotic initiation factor 2-bound GDP for GTP.

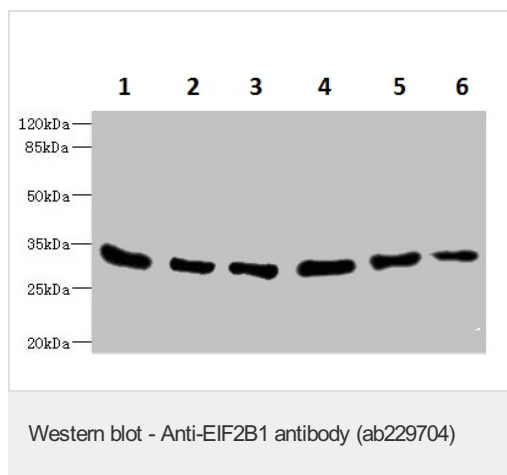
Involvement in disease

Defects in EIF2B1 are a cause of leukodystrophy with vanishing white matter (VWM) [MIM:603896]. VWM is a leukodystrophy that occurs mainly in children. Neurological signs include progressive cerebellar ataxia, spasticity, inconstant optic atrophy and relatively preserved mental abilities. The disease is chronic-progressive with, in most individuals, additional episodes of rapid deterioration following febrile infections or minor head trauma. While childhood onset is the most common form of the disorder, some severe forms are apparent at birth. A severe, early-onset form seen among the Cree and Chippewayan populations of Quebec and Manitoba is called Cree leukoencephalopathy. Milder forms may not become evident until adolescence or adulthood. Some females with milder forms of the disease who survive to adolescence exhibit ovarian dysfunction. This variant of the disorder is called ovarioleukodystrophy.

Sequence similarities

Belongs to the eIF-2B alpha/beta/delta subunits family.

Images



All lanes : Anti-EIF2B1 antibody (ab229704) at 1/1000 dilution

Lane 1 : MCF7 (human breast adenocarcinoma cell line) whole cell lysate

Lane 2 : K562 (human chronic myelogenous leukemia cell line from bone marrow) whole cell lysate

Lane 3 : Mouse liver tissue lysate

Lane 4 : Mouse brain tissue lysate

Lane 5 : Jurkat (human T cell leukemia cell line from peripheral blood) whole cell lysate

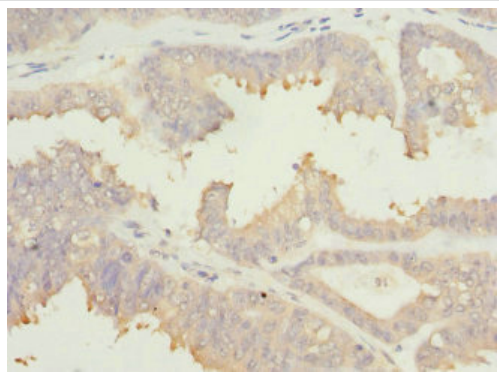
Lane 6 : A431 (human epidermoid carcinoma cell line) whole cell lysate

Secondary

All lanes : Goat anti-rabbit IgG at 1/10000 dilution

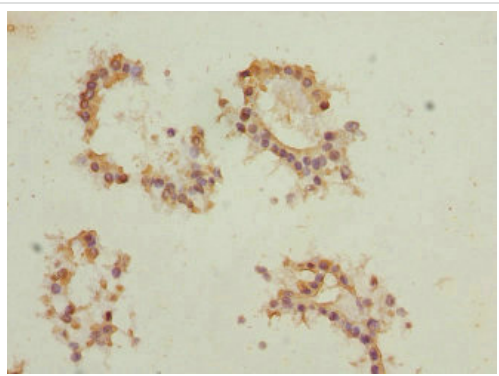
Predicted band size: 34 kDa

Observed band size: 34 kDa



Paraffin-embedded human prostate cancer tissue stained for EIF2B1 using ab229704 at 1/100 dilution in immunohistochemical analysis.

Immunohistochemistry (Formalin/PFA-fixed paraffin-embedded sections) - Anti-EIF2B1 antibody (ab229704)



Paraffin-embedded human breast cancer tissue stained for EIF2B1 using ab229704 at 1/100 dilution in immunohistochemical analysis.

Immunohistochemistry (Formalin/PFA-fixed paraffin-embedded sections) - Anti-EIF2B1 antibody (ab229704)

Please note: All products are "FOR RESEARCH USE ONLY. NOT FOR USE IN DIAGNOSTIC PROCEDURES"

Our Abpromise to you: Quality guaranteed and expert technical support

- Replacement or refund for products not performing as stated on the datasheet
- Valid for 12 months from date of delivery

- Response to your inquiry within 24 hours
- We provide support in Chinese, English, French, German, Japanese and Spanish
- Extensive multi-media technical resources to help you
- We investigate all quality concerns to ensure our products perform to the highest standards

If the product does not perform as described on this datasheet, we will offer a refund or replacement. For full details of the Abpromise, please visit <https://www.abcam.com/abpromise> or contact our technical team.

Terms and conditions

- Guarantee only valid for products bought direct from Abcam or one of our authorized distributors