


Product datasheet

Anti-eIF4EBP1 antibody ab227540

3 Images

Overview

Product name	Anti-eIF4EBP1 antibody
Description	Rabbit polyclonal to eIF4EBP1
Host species	Rabbit
Tested applications	Suitable for: WB, ICC/IF
Species reactivity	Reacts with: Human Predicted to work with: Mouse, Rat, Cow 
Immunogen	Recombinant full length protein within Human eIF4EBP1 aa 2-118. The exact sequence is proprietary. Sequence: SGGSSCSQTPSRAIPATRRVVLGDGVQLPPGDYSTTPGG TLFSTTPGGTR IYDRKFLMECRNSPVTKTPPRDLPTIPGVTSPSSDEPPME ASQSHLRNS PEDKRAGGEESQFEMDI

Database link: [Q13541](#)

 [Run BLAST with](#)

 [Run BLAST with](#)

Positive control WB: HeLa cell extract; HEK-293T whole cell extract. ICC/IF: HCT 116 cells.

General notes

Reproducibility is key to advancing scientific discovery and accelerating scientists' next breakthrough.

Abcam is leading the way with our range of recombinant antibodies, knockout-validated antibodies and knockout cell lines, all of which support improved reproducibility.

We are also planning to innovate the way in which we present recommended applications and species on our product datasheets, so that only applications & species that have been tested in our own labs, our suppliers or by selected trusted collaborators are covered by our Abpromise™ guarantee.

In preparation for this, we have started to update the applications & species that this product is Abpromise guaranteed for.

We are also updating the applications & species that this product has been “predicted to work with,” however this information is not covered by our Abpromise guarantee.

Applications & species from publications and Abreviews that have not been tested in our own labs or in those of our suppliers are not covered by the Abpromise guarantee.

Please check that this product meets your needs before purchasing. If you have any questions,

special requirements or concerns, please send us an inquiry and/or contact our Support team ahead of purchase. Recommended alternatives for this product can be found below, as well as customer reviews and Q&As.

Properties

Form	Liquid
Storage instructions	Shipped at 4°C. Store at +4°C short term (1-2 weeks). Upon delivery aliquot. Store at -20°C long term. Avoid freeze / thaw cycle.
Storage buffer	pH: 7.00 Preservative: 0.025% Proclin 300 Constituents: 79% PBS, 20% Glycerol (glycerin, glycerine)
Purity	Immunogen affinity purified
Clonality	Polyclonal
Isotype	IgG

Applications

Our [Abpromise guarantee](#) covers the use of **ab227540** in the following tested applications.

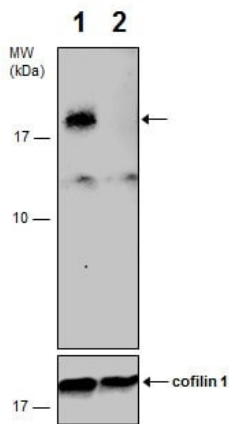
The application notes include recommended starting dilutions; optimal dilutions/concentrations should be determined by the end user.

Application	Abreviews	Notes
WB		1/500 - 1/3000. Predicted molecular weight: 13 kDa.
ICC/IF		1/100 - 1/1000.

Target

Function	Regulates eIF4E activity by preventing its assembly into the eIF4F complex. Mediates the regulation of protein translation by hormones, growth factors and other stimuli that signal through the MAP kinase and mTORC1 pathways.
Sequence similarities	Belongs to the eIF4E-binding protein family.
Post-translational modifications	Phosphorylated on serine and threonine residues in response to insulin, EGF and PDGF. Phosphorylation at Thr-37, Thr-46, Ser-65 and Thr-70 is regulated by mTORC1. Phosphorylated upon DNA damage, probably by ATM or ATR.

Images



Western blot - Anti-eIF4EBP1 antibody (ab227540)

All lanes : Anti-eIF4EBP1 antibody (ab227540) at 1/1000 dilution

Lane 1 : HeLa (human epithelial cell line from cervix adenocarcinoma) cell extract

Lane 2 : eIF4EBP1 knockout HeLa (human epithelial cell line from cervix adenocarcinoma) cell extract

Lysates/proteins at 30 µg per lane.

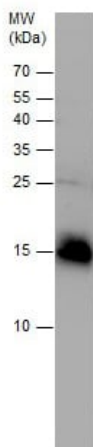
Secondary

All lanes : HRP-conjugated anti-rabbit IgG

Developed using the ECL technique.

Predicted band size: 13 kDa

15% SDS-PAGE gel.

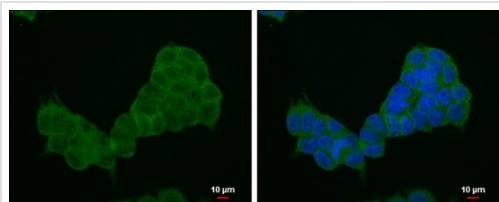


Western blot - Anti-eIF4EBP1 antibody (ab227540)

Anti-eIF4EBP1 antibody (ab227540) at 1/1000 dilution + HEK-293T (human epithelial cell line from embryonic kidney transformed with large T antigen) whole cell extract at 30 µg

Predicted band size: 13 kDa

15% SDS-PAGE gel.



Immunocytochemistry/ Immunofluorescence - Anti-eIF4EBP1 antibody (ab227540)

4% paraformaldehyde-fixed HCT 116 (human colorectal carcinoma cell line) cells stained for eIF4EBP1 (green) using ab227540 at 1/1000 dilution in ICC/IF.

Nuclear counterstain: Hoechst 33342 (blue).

Please note: All products are "FOR RESEARCH USE ONLY. NOT FOR USE IN DIAGNOSTIC PROCEDURES"

Our Abpromise to you: Quality guaranteed and expert technical support

- Replacement or refund for products not performing as stated on the datasheet
- Valid for 12 months from date of delivery
- Response to your inquiry within 24 hours
- We provide support in Chinese, English, French, German, Japanese and Spanish
- Extensive multi-media technical resources to help you
- We investigate all quality concerns to ensure our products perform to the highest standards

If the product does not perform as described on this datasheet, we will offer a refund or replacement. For full details of the Abpromise, please visit <https://www.abcam.com/abpromise> or contact our technical team.

Terms and conditions

- Guarantee only valid for products bought direct from Abcam or one of our authorized distributors