

Product datasheet

Anti-eIF4EBP1 (phospho T70) antibody ab111421

1 Image

Overview

Product name	Anti-eIF4EBP1 (phospho T70) antibody
Description	Rabbit polyclonal to eIF4EBP1 (phospho T70)
Host species	Rabbit
Specificity	Detects endogenous levels of eIF4EBP1 only when phosphorylated at threonine70.
Tested applications	Suitable for: IHC-P
Species reactivity	Reacts with: Human
Immunogen	Synthetic peptide derived from human eIF4EBP1 (Q13541) around the phosphorylation site of Thr70 (T-K-T ^P -P-P).
Positive control	Human colon carcinoma tissue.

Properties

Form	Liquid
Storage instructions	Shipped at 4°C. Store at 4°C (up to 6 months). Store at -20°C.
Storage buffer	pH: 7.40 Preservative: 0.02% Sodium azide Constituents: PBS, 50% Glycerol, 0.88% Sodium chloride Note: PBS without calcium and magnesium
Purity	Immunogen affinity purified
Purification notes	Affinity-purified from rabbit antiserum by affinity-chromatography using epitope-specific phosphopeptide. The antibody against non-phosphopeptide was removed by chromatography using non-phosphopeptide corresponding to the phosphorylation
Clonality	Polyclonal
Isotype	IgG

Applications

Our [Abpromise guarantee](#) covers the use of **ab111421** in the following tested applications.

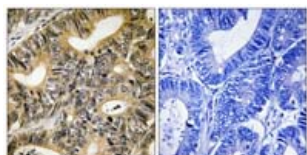
The application notes include recommended starting dilutions; optimal dilutions/concentrations should be determined by the end user.

Application	Abreviews	Notes
IHC-P		1/50 - 1/100. Perform heat mediated antigen retrieval with citrate buffer pH 6 before commencing with IHC staining protocol.

Target

Function	Regulates eIF4E activity by preventing its assembly into the eIF4F complex. Mediates the regulation of protein translation by hormones, growth factors and other stimuli that signal through the MAP kinase and mTORC1 pathways.
Sequence similarities	Belongs to the eIF4E-binding protein family.
Post-translational modifications	Phosphorylated on serine and threonine residues in response to insulin, EGF and PDGF. Phosphorylation at Thr-37, Thr-46, Ser-65 and Thr-70 is regulated by mTORC1. Phosphorylated upon DNA damage, probably by ATM or ATR.

Images



Immunohistochemistry analysis of paraffin-embedded human colon carcinoma, using eIF4EBP1 (Phospho-Thr70) Antibody (ab111421). The picture on the right is treated with the synthesized phospho peptide.

Immunohistochemistry (Formalin/PFA-fixed paraffin-embedded sections) - Anti-eIF4EBP1 (phospho T70) antibody (ab111421)

Please note: All products are "FOR RESEARCH USE ONLY. NOT FOR USE IN DIAGNOSTIC PROCEDURES"

Our Abpromise to you: Quality guaranteed and expert technical support

- Replacement or refund for products not performing as stated on the datasheet
- Valid for 12 months from date of delivery
- Response to your inquiry within 24 hours
- We provide support in Chinese, English, French, German, Japanese and Spanish
- Extensive multi-media technical resources to help you
- We investigate all quality concerns to ensure our products perform to the highest standards

If the product does not perform as described on this datasheet, we will offer a refund or replacement. For full details of the Abpromise, please visit <https://www.abcam.com/abpromise> or contact our technical team.

Terms and conditions

- Guarantee only valid for products bought direct from Abcam or one of our authorized distributors