

Product datasheet

Anti-EIF5 antibody [EPR12140(B)] ab170915

Recombinant RabMAb

5 Images

Overview

<b>Product name</b>	Anti-EIF5 antibody [EPR12140(B)]
<b>Description</b>	Rabbit monoclonal [EPR12140(B)] to EIF5
<b>Host species</b>	Rabbit
<b>Tested applications</b>	<b>Suitable for:</b> WB, IHC-P, ICC/IF, Flow Cyt <b>Unsuitable for:</b> IP
<b>Species reactivity</b>	<b>Reacts with:</b> Mouse, Rat, Human
<b>Immunogen</b>	Synthetic peptide within Human EIF5 aa 1-100 (Cysteine residue). The exact sequence is proprietary. Database link: <a href="#">P55010</a>
<b>Positive control</b>	K562, HeLa and HepG2 whole cell lysate ( <a href="#">ab7900</a> ); Human colonic carcinoma and pancreas tissues; K562 and HepG2 cells.
<b>General notes</b>	Our RabMAb <sup>®</sup> technology is a patented hybridoma-based technology for making rabbit monoclonal antibodies. For details on our patents, please refer to <a href="#">RabMAb<sup>®</sup> patents</a> .  This product is a <a href="#">recombinant rabbit monoclonal antibody</a> .

Properties

<b>Form</b>	Liquid
<b>Storage instructions</b>	Shipped at 4°C. Store at +4°C short term (1-2 weeks). Upon delivery aliquot. Store at -20°C long term. Avoid freeze / thaw cycle.
<b>Storage buffer</b>	Preservative: 0.01% Sodium azide Constituents: 9% PBS, 40% Glycerol, 0.05% BSA, 50% Tissue culture supernatant
<b>Purity</b>	Tissue culture supernatant
<b>Clonality</b>	Monoclonal
<b>Clone number</b>	EPR12140(B)
<b>Isotype</b>	IgG

Applications

Our [Abpromise guarantee](#) covers the use of **ab170915** in the following tested applications.

The application notes include recommended starting dilutions; optimal dilutions/concentrations should be determined by the end user.

Application	Abreviews	Notes
WB		1/1000 - 1/10000. Predicted molecular weight: 49 kDa.
IHC-P		1/50 - 1/100.
ICC/IF		1/100 - 1/250.
Flow Cyt		1/100 - 1/500. <a href="#">ab172730</a> - Rabbit monoclonal IgG, is suitable for use as an isotype control with this antibody.

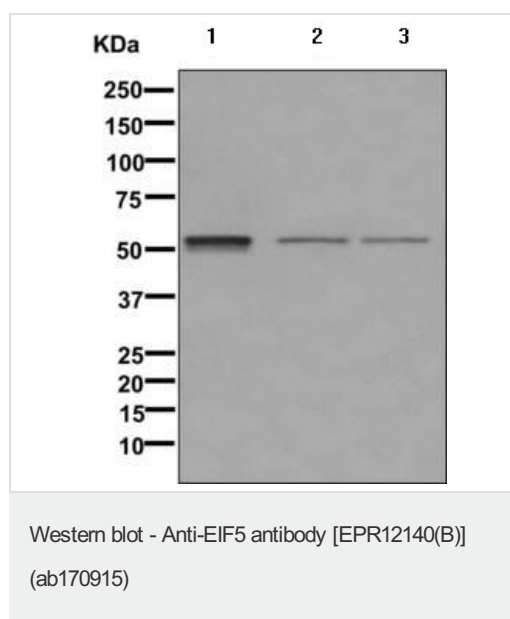
**Application notes** Is unsuitable for IP.

## Target

**Function** Catalyzes the hydrolysis of GTP bound to the 40S ribosomal initiation complex (40S.mRNA.Met-tRNA[F].eIF-2.GTP) with the subsequent joining of a 60S ribosomal subunit resulting in the release of eIF-2 and the guanine nucleotide. The subsequent joining of a 60S ribosomal subunit results in the formation of a functional 80S initiation complex (80S.mRNA.Met-tRNA[F]).

**Sequence similarities** Belongs to the eIF-2-beta/eIF-5 family.  
Contains 1 W2 domain.

## Images



**All lanes** : Anti-EIF5 antibody [EPR12140(B)] (ab170915) at 1/1000 dilution

**Lane 1** : K562 cell lysate

**Lane 2** : HeLa cell lysate

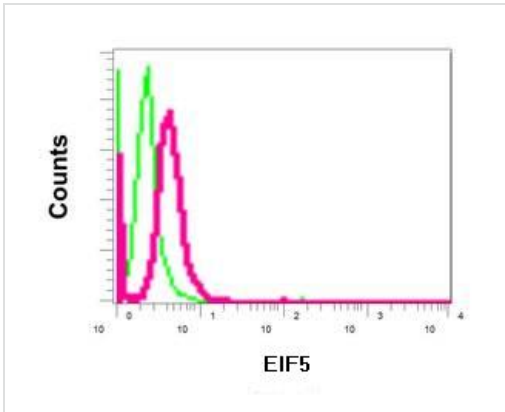
**Lane 3** : HepG2 cell lysate

Lysates/proteins at 10 µg per lane.

### Secondary

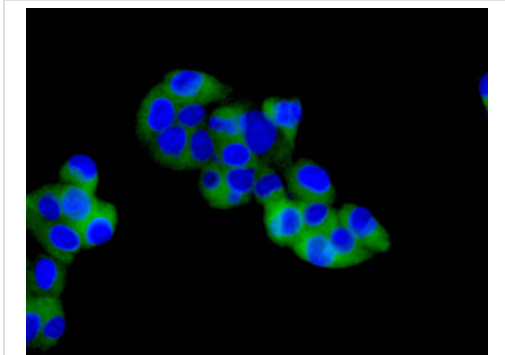
**All lanes** : Goat anti-rabbit HRP conjugate at 1/2000 dilution

**Predicted band size:** 49 kDa



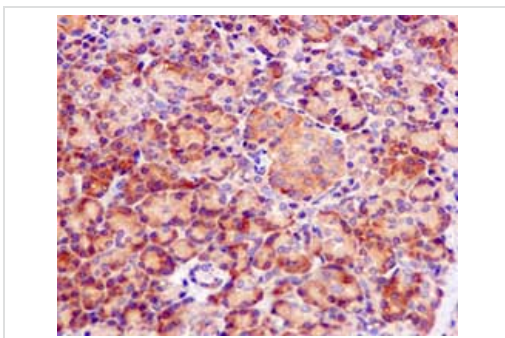
Flow cytometric analysis of permeabilized K562 cells labeling EIF5 with ab170915 at 1/100 dilution (red) compared to a rabbit IgG negative control (green).

Flow Cytometry - Anti-EIF5 antibody [EPR12140(B)] (ab170915)



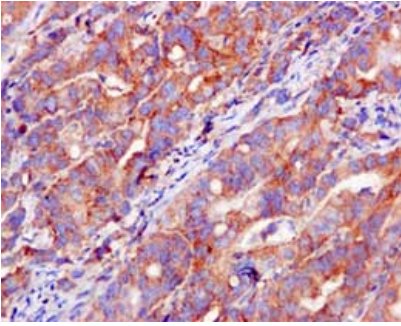
Immunofluorescence analysis of HepG2 cells labeling EIF5 with ab170915 at 1/100 dilution (green). DAPI nuclear staining (blue).

Immunocytochemistry/ Immunofluorescence - Anti-EIF5 antibody [EPR12140(B)] (ab170915)



Immunohistochemical analysis of paraffin-embedded Human pancreas tissue labeling EIF5 with ab170915 at 1/50 dilution.

Immunohistochemistry (Formalin/PFA-fixed paraffin-embedded sections) - Anti-EIF5 antibody [EPR12140(B)] (ab170915)



Immunohistochemical analysis of paraffin-embedded Human colonic carcinoma tissue labeling EIF5 with ab170915 at 1/50 dilution.

Immunohistochemistry (Formalin/PFA-fixed paraffin-embedded sections) - Anti-EIF5 antibody  
[EPR12140(B)] (ab170915)

**Please note:** All products are "FOR RESEARCH USE ONLY AND ARE NOT INTENDED FOR DIAGNOSTIC OR THERAPEUTIC USE"

### **Our Abpromise to you: Quality guaranteed and expert technical support**

---

- Replacement or refund for products not performing as stated on the datasheet
- Valid for 12 months from date of delivery
- Response to your inquiry within 24 hours
  
- We provide support in Chinese, English, French, German, Japanese and Spanish
- Extensive multi-media technical resources to help you
- We investigate all quality concerns to ensure our products perform to the highest standards

If the product does not perform as described on this datasheet, we will offer a refund or replacement. For full details of the Abpromise, please visit <https://www.abcam.com/abpromise> or contact our technical team.

### **Terms and conditions**

---

- Guarantee only valid for products bought direct from Abcam or one of our authorized distributors