




Product datasheet

Anti-ELAC2 antibody - C-terminal ab205950

2 Images

Overview

Product name	Anti-ELAC2 antibody - C-terminal
Description	Rabbit polyclonal to ELAC2 - C-terminal
Host species	Rabbit
Tested applications	Suitable for: WB, IP
Species reactivity	Reacts with: Mouse, Human Predicted to work with: Chimpanzee, Gorilla 
Immunogen	Synthetic peptide within Human ELAC2 aa 776-826 (C terminal). The exact sequence is proprietary. Sequence: EEMEERREKRELQRVRAALLSRELAGGLEDGEPQQK RAHTEEPQAKKVRA Q Database link: Q9BQ52  Run BLAST with  Run BLAST with
Positive control	HeLa, 293T, Jurkat, TCMK1 and NIH 3T3 whole cell lysates.

Properties

Form	Liquid
Storage instructions	Shipped at 4°C. Store at +4°C short term (1-2 weeks). Upon delivery aliquot. Store at -20°C long term. Avoid freeze / thaw cycle.
Storage buffer	Preservative: 0.09% Sodium azide Constituent: 99% Tris citrate/phosphate pH 7-8
Purity	Immunogen affinity purified
Purification notes	ab205950 was affinity purified using an epitope specific to ELAC2 immobilized on solid support.
Clonality	Polyclonal
Isotype	IgG

Applications

Our [Abpromise guarantee](#) covers the use of **ab205950** in the following tested applications.

The application notes include recommended starting dilutions; optimal dilutions/concentrations should be determined by the end user.

Application	Abreviews	Notes
WB		1/2000 - 1/10000. Predicted molecular weight: 92 kDa.
IP		Use at 2-10 µg/mg of lysate.

Target

Function

Zinc phosphodiesterase, which displays some tRNA 3'-processing endonuclease activity. Probably involved in tRNA maturation, by removing a 3'-trailer from precursor tRNA.

Tissue specificity

Widely expressed. Highly expressed in heart, placenta, liver, skeletal muscle, kidney, pancreas, testis and ovary. Weakly expressed in brain, lung, spleen, thymus, prostate, small intestine, colon and leukocytes.

Involvement in disease

Defects in ELAC2 may be a cause of susceptibility to prostate cancer (PC) [MIM:176807]. It is a malignancy originating in tissues of the prostate. Most prostate cancers are adenocarcinomas that develop in the acini of the prostatic ducts. Other rare histopathologic types of prostate cancer that occur in approximately 5% of patients include small cell carcinoma, mucinous carcinoma, prostatic ductal carcinoma, transitional cell carcinoma, squamous cell carcinoma, basal cell carcinoma, adenoid cystic carcinoma (basaloid), signet-ring cell carcinoma and neuroendocrine carcinoma.

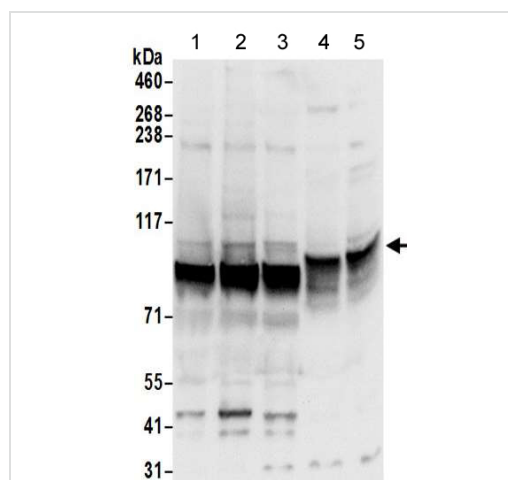
Sequence similarities

Belongs to the RNase Z family.

Cellular localization

Nucleus.

Images



Western blot - Anti-ELAC2 antibody - C-terminal (ab205950)

All lanes : Anti-ELAC2 antibody - C-terminal (ab205950) at 0.1 µg/ml

Lane 1 : HeLa whole cell lysate

Lane 2 : 293T whole cell lysate

Lane 3 : Jurkat whole cell lysate

Lane 4 : TCMK1 whole cell lysate

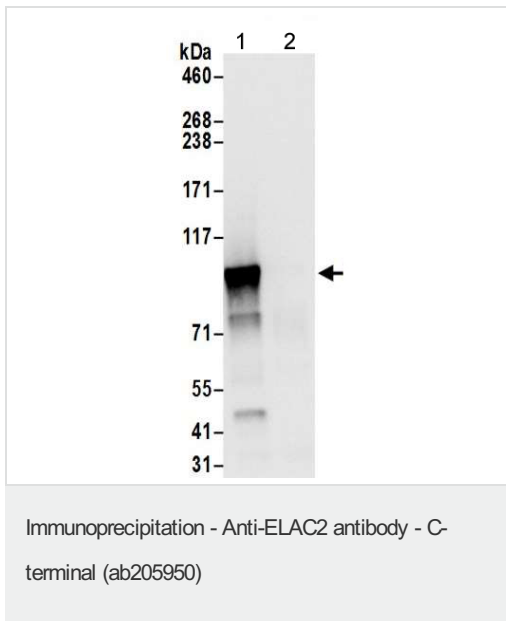
Lane 5 : NIH 3T3 whole cell lysate

Lysates/proteins at 50 µg per lane.

Developed using the ECL technique.

Predicted band size: 92 kDa

Exposure time: 3 seconds



Detection of ELAC2 in immunoprecipitates of 293T whole cell lysates (1 mg for IP, 20% of IP loaded) using ab205950 at 6 µg/mg lysate for IP and 0.4 µg/ml for WB detection (lane 1). Lane 2 represents control IgG IP. Detection: Chemiluminescence with an exposure time of 3 seconds.

Please note: All products are "FOR RESEARCH USE ONLY. NOT FOR USE IN DIAGNOSTIC PROCEDURES"

Our Abpromise to you: Quality guaranteed and expert technical support

- Replacement or refund for products not performing as stated on the datasheet
- Valid for 12 months from date of delivery
- Response to your inquiry within 24 hours
- We provide support in Chinese, English, French, German, Japanese and Spanish
- Extensive multi-media technical resources to help you
- We investigate all quality concerns to ensure our products perform to the highest standards

If the product does not perform as described on this datasheet, we will offer a refund or replacement. For full details of the Abpromise, please visit <https://www.abcam.com/abpromise> or contact our technical team.

Terms and conditions

- Guarantee only valid for products bought direct from Abcam or one of our authorized distributors