



Product datasheet

Anti-Elastase-1 antibody ab231117

3 Images

Overview

Product name	Anti-Elastase-1 antibody
Description	Rabbit polyclonal to Elastase-1
Host species	Rabbit
Tested applications	Suitable for: IHC-P, WB
Species reactivity	Reacts with: Mouse
Immunogen	<p>Recombinant fragment (His-tag) corresponding to Mouse Elastase-1 aa 44-259 (N terminal). (Expressed in E.coli). Sequence:</p> <p>LQYQYGGSWHHTCGGTLIRSNWVMTAAHCVDSPMTY RVVVGEHNLSQNDG TEQYVNVQKIVSHPYWNKNNVAGYDIALLRKASVTL NNYVQLGVLPRE GTILANNSPCYITGWGRTRTNGELAQTLQQAYLPSVSY SICSSSSYWGSS VKNTMVCAGGDGVRSGCQGDSSGGLHCMVNGQYAV HGVTSFVSSMGCNVA RKPTVFTRVSAYISWM</p> <p>Database link: Q91X79</p> <p style="text-align: right;"> Run BLAST with  Run BLAST with</p>
Positive control	WB: Recombinant mouse Elastase-1 protein, Mouse serum. ICH-P: Mouse testis tissue.
General notes	This product was previously labelled as CELA1

Properties

Form	Liquid
Storage instructions	Shipped at 4°C. Store at +4°C short term (1-2 weeks). Upon delivery aliquot. Store at -20°C long term. Avoid freeze / thaw cycle.
Storage buffer	<p>pH: 7.40 Preservative: 0.02% Sodium azide Constituents: PBS, 50% Glycerol</p>
Purity	Immunogen affinity purified

Clonality	Polyclonal
Isotype	IgG

Applications

Our [Abpromise guarantee](#) covers the use of **ab231117** in the following tested applications.

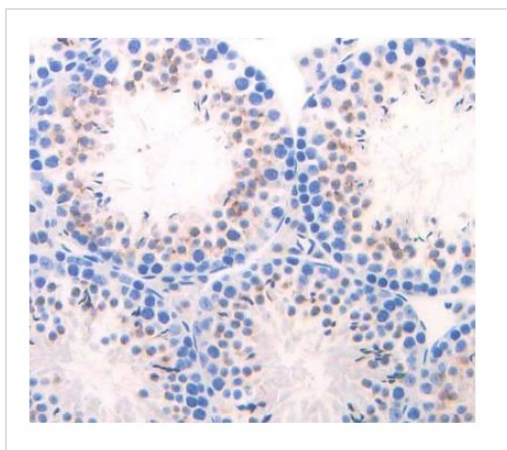
The application notes include recommended starting dilutions; optimal dilutions/concentrations should be determined by the end user.

Application	Abreviews	Notes
IHC-P		Use a concentration of 5 - 20 µg/ml.
WB		Use a concentration of 0.5 - 2 µg/ml. Predicted molecular weight: 29 kDa.

Target

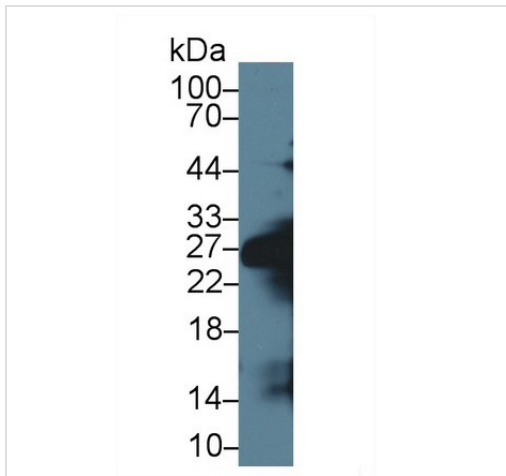
Function	Acts upon elastin.
Tissue specificity	Skin; not expressed in pancreas.
Sequence similarities	Belongs to the peptidase S1 family. Elastase subfamily. Contains 1 peptidase S1 domain.
Cellular localization	Secreted.

Images



DAB stained, formalin-fixed, paraffin-embedded mouse testis tissue stained for Elastase-1 using ab231117 at 20 µg/mL in immunohistochemical analysis.

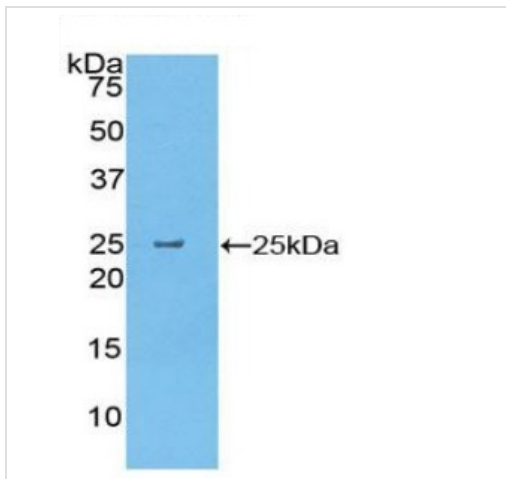
Immunohistochemistry (Formalin/PFA-fixed paraffin-embedded sections) - Anti-Elastase-1 antibody (ab231117)



Western blot - Anti-Elastase-1 antibody (ab231117)

Anti-Elastase-1 antibody (ab231117) at 1 µg/ml + Mouse serum

Predicted band size: 29 kDa



Western blot - Anti-Elastase-1 antibody (ab231117)

Anti-Elastase-1 antibody (ab231117) at 1 µg/ml + Recombinant mouse Elastase-1 protein.

Predicted band size: 29 kDa

Please note: All products are "FOR RESEARCH USE ONLY. NOT FOR USE IN DIAGNOSTIC PROCEDURES"

Our Abpromise to you: Quality guaranteed and expert technical support

- Replacement or refund for products not performing as stated on the datasheet
- Valid for 12 months from date of delivery
- Response to your inquiry within 24 hours
- We provide support in Chinese, English, French, German, Japanese and Spanish
- Extensive multi-media technical resources to help you
- We investigate all quality concerns to ensure our products perform to the highest standards

If the product does not perform as described on this datasheet, we will offer a refund or replacement. For full details of the Abpromise,

please visit <https://www.abcam.com/abpromise> or contact our technical team.

Terms and conditions

- Guarantee only valid for products bought direct from Abcam or one of our authorized distributors