


Product datasheet

Anti-ELK1 (phospho S383) antibody ab254139

1 Image

Overview

Product name	Anti-ELK1 (phospho S383) antibody
Description	Rabbit polyclonal to ELK1 (phospho S383)
Host species	Rabbit
Tested applications	Suitable for: WB
Species reactivity	Reacts with: Recombinant fragment Predicted to work with: Mouse, Rat, Dog, Human, Non human primates, Zebrafish 
Immunogen	Synthetic peptide within Human ELK1 (phospho S383). The exact sequence is proprietary. Database link: P19419
Positive control	WB: Recombinant ELK-1.
General notes	<p>The Life Science industry has been in the grips of a reproducibility crisis for a number of years. Abcam is leading the way in addressing this with our range of recombinant monoclonal antibodies and knockout edited cell lines for gold-standard validation. Please check that this product meets your needs before purchasing.</p> <p>If you have any questions, special requirements or concerns, please send us an inquiry and/or contact our Support team ahead of purchase. Recommended alternatives for this product can be found below, along with publications, customer reviews and Q&As</p>

Properties

Form	Liquid
Storage instructions	Shipped at 4°C. Store at +4°C short term (1-2 weeks). Upon delivery aliquot. Store at -20°C long term. Avoid freeze / thaw cycle.
Storage buffer	pH: 7.50 Constituents: HEPES, 0.87% Sodium chloride, 50% Glycerol, 0.01% BSA
Purity	Immunogen affinity purified
Purification notes	The antibody is prepared from pooled rabbit serum by affinity purification via sequential chromatography on phospho- and dephospho-peptide affinity columns.
Clonality	Polyclonal
Isotype	IgG

Applications

The Abpromise guarantee

Our [Abpromise guarantee](#) covers the use of ab254139 in the following tested applications.

The application notes include recommended starting dilutions; optimal dilutions/concentrations should be determined by the end user.

Application	Abreviews	Notes
WB		1/1000.

Target

Function

Stimulates transcription. Binds to purine-rich DNA sequences. Can form a ternary complex with the serum response factor and the ETS and SRF motifs of the fos serum response element.

Tissue specificity

Lung and testis.

Sequence similarities

Belongs to the ETS family.
Contains 1 ETS DNA-binding domain.

Post-translational modifications

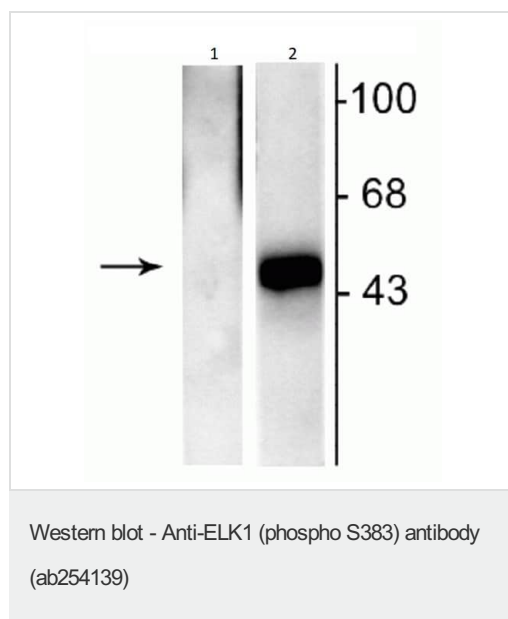
Sumoylation represses transcriptional activator activity as it results in recruitment of HDAC2 to target gene promoters which leads to decreased histone acetylation and reduced transactivator activity. It also regulates nuclear retention.

On mitogenic stimulation, phosphorylated on C-terminal serine and threonine residues by MAPK1. Ser-383 and Ser-389 are the preferred sites for MAPK1. In vitro, phosphorylation by MAPK1 potentiates ternary complex formation with the serum responses factors, SRE and SRF. Phosphorylation leads to loss of sumoylation and restores transcriptional activator activity.

Cellular localization

Nucleus.

Images



All lanes : Anti-ELK1 (phospho S383) antibody (ab254139) at 1/1000 dilution

Lane 1 : Recombinant ELK1 with immunizing phosphopeptide

Lane 2 : Recombinant ELK1

Please note: All products are "FOR RESEARCH USE ONLY. NOT FOR USE IN DIAGNOSTIC PROCEDURES"

Our Abpromise to you: Quality guaranteed and expert technical support

- Replacement or refund for products not performing as stated on the datasheet
- Valid for 12 months from date of delivery
- Response to your inquiry within 24 hours

- We provide support in Chinese, English, French, German, Japanese and Spanish
- Extensive multi-media technical resources to help you
- We investigate all quality concerns to ensure our products perform to the highest standards

If the product does not perform as described on this datasheet, we will offer a refund or replacement. For full details of the Abpromise, please visit <https://www.abcam.com/abpromise> or contact our technical team.

Terms and conditions

- Guarantee only valid for products bought direct from Abcam or one of our authorized distributors