


Product datasheet

Anti-Elongin-C antibody ab226831

2 Images

Overview

Product name	Anti-Elongin-C antibody
Description	Rabbit polyclonal to Elongin-C
Host species	Rabbit
Tested applications	Suitable for: WB
Species reactivity	Reacts with: Human Predicted to work with: Mouse, Rat, Chicken, Cow, Cat, Xenopus laevis, Chimpanzee, Rhesus monkey 
Immunogen	Synthetic peptide within Human Elongin-C (internal sequence). The exact sequence is proprietary. Database link: Q15369
Positive control	WB: PC-3, Jurkat, Raji and NCI-H929 cell lysate.
General notes	Previously labelled as TCEB1.

Reproducibility is key to advancing scientific discovery and accelerating scientists' next breakthrough.

Abcam is leading the way with our range of recombinant antibodies, knockout-validated antibodies and knockout cell lines, all of which support improved reproducibility.

We are also planning to innovate the way in which we present recommended applications and species on our product datasheets, so that only applications & species that have been tested in our own labs, our suppliers or by selected trusted collaborators are covered by our Abpromise™ guarantee.

In preparation for this, we have started to update the applications & species that this product is Abpromise guaranteed for.

We are also updating the applications & species that this product has been “predicted to work with,” however this information is not covered by our Abpromise guarantee.

Applications & species from publications and Abreviews that have not been tested in our own labs or in those of our suppliers are not covered by the Abpromise guarantee.

Please check that this product meets your needs before purchasing. If you have any questions, special requirements or concerns, please send us an inquiry and/or contact our Support team ahead of purchase. Recommended alternatives for this product can be found below, as well as customer reviews and Q&As.

Properties

Form	Liquid
Storage instructions	Shipped at 4°C. Store at +4°C short term (1-2 weeks). Upon delivery aliquot. Store at -20°C long term. Avoid freeze / thaw cycle.
Storage buffer	pH: 7.00 Preservative: 0.025% Proclin 300 Constituents: 79% PBS, 20% Glycerol (glycerin, glycerine)
Purity	Affinity purified
Clonality	Polyclonal
Isotype	IgG

Applications

Our [Abpromise guarantee](#) covers the use of **ab226831** in the following tested applications.

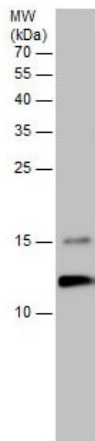
The application notes include recommended starting dilutions; optimal dilutions/concentrations should be determined by the end user.

Application	Abreviews	Notes
WB		1/1000 - 1/3000. Predicted molecular weight: 12 kDa.

Target

Function	<p>SIII, also known as elongin, is a general transcription elongation factor that increases the RNA polymerase II transcription elongation past template-encoded arresting sites. Subunit A is transcriptionally active and its transcription activity is strongly enhanced by binding to the dimeric complex of the SIII regulatory subunits B and C (elongin BC complex).</p> <p>The elongin BC complex seems to be involved as an adapter protein in the proteasomal degradation of target proteins via different E3 ubiquitin ligase complexes, including the von Hippel-Lindau ubiquitination complex CBC(VHL). By binding to BC-box motifs it seems to link target recruitment subunits, like VHL and members of the SOCS box family, to Cullin/RBX1 modules that activate E2 ubiquitination enzymes.</p>
Tissue specificity	Overexpressed in prostate cancer cell line PC-3 and breast cancer cell line SK-BR-3.
Sequence similarities	Belongs to the SKP1 family.
Cellular localization	Nucleus.

Images



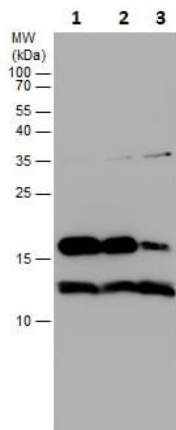
Western blot - Anti-Elongin-C antibody (ab226831)

Anti-Elongin-C antibody (ab226831) at 1/1000 dilution + PC-3 (human prostate adenocarcinoma cell line) cell lysate at 30 µg

Developed using the ECL technique.

Performed under reducing conditions.

Predicted band size: 12 kDa



Western blot - Anti-Elongin-C antibody (ab226831)

All lanes : Anti-Elongin-C antibody (ab226831) at 1/2000 dilution

Lane 1 : Jurkat (human T cell leukemia cell line from peripheral blood) cell lysate

Lane 2 : Raji (human Burkitt's lymphoma cell line) cell lysate

Lane 3 : NCI-H929 cell lysate

Lysates/proteins at 30 µg per lane.

Developed using the ECL technique.

Performed under reducing conditions.

Predicted band size: 12 kDa

Please note: All products are "FOR RESEARCH USE ONLY. NOT FOR USE IN DIAGNOSTIC PROCEDURES"

Our Abpromise to you: Quality guaranteed and expert technical support

- Replacement or refund for products not performing as stated on the datasheet
- Valid for 12 months from date of delivery
- Response to your inquiry within 24 hours

- We provide support in Chinese, English, French, German, Japanese and Spanish
- Extensive multi-media technical resources to help you
- We investigate all quality concerns to ensure our products perform to the highest standards

If the product does not perform as described on this datasheet, we will offer a refund or replacement. For full details of the Abpromise, please visit <https://www.abcam.com/abpromise> or contact our technical team.

Terms and conditions

- Guarantee only valid for products bought direct from Abcam or one of our authorized distributors