


Product datasheet

Anti-ELOVL1/SSC1 antibody ab230634

2 Images

Overview

<b>Product name</b>	Anti-ELOVL1/SSC1 antibody
<b>Description</b>	Rabbit polyclonal to ELOVL1/SSC1
<b>Host species</b>	Rabbit
<b>Tested applications</b>	<b>Suitable for:</b> WB, IHC-P
<b>Species reactivity</b>	<b>Reacts with:</b> Human <b>Predicted to work with:</b> Mouse, Rat, Monkey 
<b>Immunogen</b>	Synthetic peptide corresponding to Human ELOVL1/SSC1 (internal sequence) conjugated to keyhole limpet haemocyanin. Database link: <a href="#">Q9BW60</a>
<b>Positive control</b>	IHC-P: Human kidney tissue. WB: HeLa and HepG2 whole cell lysates.
<b>General notes</b>	This product was previously labelled as ELOVL1

Properties

<b>Form</b>	Liquid
<b>Storage instructions</b>	Shipped at 4°C. Store at +4°C short term (1-2 weeks). Upon delivery aliquot. Store at -20°C long term. Avoid freeze / thaw cycle.
<b>Storage buffer</b>	pH: 7.30 Preservative: 0.01% Sodium azide Constituents: PBS, 30% Glycerol
<b>Purity</b>	Immunogen affinity purified
<b>Clonality</b>	Polyclonal
<b>Isotype</b>	IgG

Applications

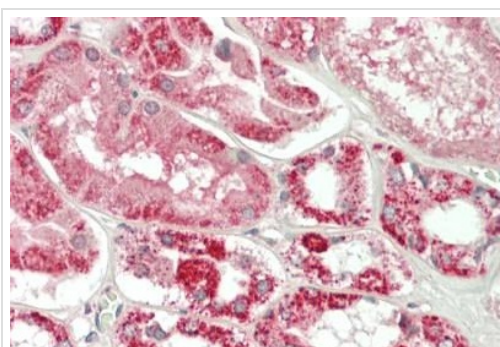
Our [Abpromise guarantee](#) covers the use of **ab230634** in the following tested applications.

The application notes include recommended starting dilutions; optimal dilutions/concentrations should be determined by the end user.

Application	Abreviews	Notes
WB		1/500 - 1/1000. Predicted molecular weight: 33 kDa.
IHC-P		1/100.

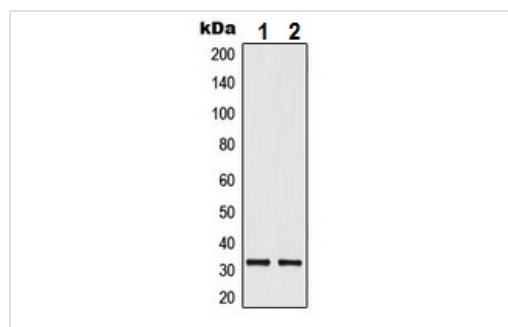
## Target

## Images



Formalin-fixed, paraffin-embedded human kidney tissue stained for ELOVL1/SSC1 using ab230634 at 1/100 dilution in immunohistochemical analysis.

Immunohistochemistry (Formalin/PFA-fixed paraffin-embedded sections) - Anti-ELOVL1/SSC1 antibody (ab230634)



**All lanes :** Anti-ELOVL1/SSC1 antibody (ab230634) at 1/500 dilution

**Lane 1 :** HeLa (human epithelial cell line from cervix adenocarcinoma) whole cell lysate

**Lane 2 :** HEK-293T (human epithelial cell line from embryonic kidney transformed with large T antigen) whole cell lysate

Western blot - Anti-ELOVL1/SSC1 antibody (ab230634)

**Predicted band size:** 33 kDa

**Please note:** All products are "FOR RESEARCH USE ONLY. NOT FOR USE IN DIAGNOSTIC PROCEDURES"

## Our Abpromise to you: Quality guaranteed and expert technical support

- Replacement or refund for products not performing as stated on the datasheet
- Valid for 12 months from date of delivery
- Response to your inquiry within 24 hours

- We provide support in Chinese, English, French, German, Japanese and Spanish
- Extensive multi-media technical resources to help you
- We investigate all quality concerns to ensure our products perform to the highest standards

If the product does not perform as described on this datasheet, we will offer a refund or replacement. For full details of the Abpromise, please visit <https://www.abcam.com/abpromise> or contact our technical team.

### **Terms and conditions**

---

- Guarantee only valid for products bought direct from Abcam or one of our authorized distributors