


Product datasheet

Anti-ELOVL5 antibody ab133382

2 Images

Overview

<b>Product name</b>	Anti-ELOVL5 antibody
<b>Description</b>	Rabbit polyclonal to ELOVL5
<b>Host species</b>	Rabbit
<b>Specificity</b>	BLAST analysis of the peptide immunogen showed no homology with other human proteins.
<b>Tested applications</b>	<b>Suitable for:</b> IHC-P
<b>Species reactivity</b>	<b>Reacts with:</b> Human <b>Predicted to work with:</b> Mouse, Rat, Rabbit, Horse, Chicken, Dog, Turkey, Monkey, Gorilla, Catfish, Opossum, Common marmoset, Orangutan, Platypus, Elephant 
<b>Immunogen</b>	Synthetic 15 amino acid peptide from a region of Human ELOVL5
<b>Positive control</b>	Human ovary and Human breast tissue

Properties

<b>Form</b>	Liquid
<b>Storage instructions</b>	Shipped at 4°C. Upon delivery aliquot and store at -80°C. Avoid freeze / thaw cycles.
<b>Storage buffer</b>	Preservative: 0.1% Sodium azide Constituent: 99% PBS
<b>Purity</b>	Immunogen affinity purified
<b>Clonality</b>	Polyclonal
<b>Isotype</b>	IgG

Applications

Our [Abpromise guarantee](#) covers the use of **ab133382** in the following tested applications.

The application notes include recommended starting dilutions; optimal dilutions/concentrations should be determined by the end user.

Application	Abreviews	Notes
IHC-P		Use a concentration of 10 - 15 µg/ml. Perform heat mediated antigen retrieval with citrate buffer pH 6 before commencing with IHC staining protocol.

## Target

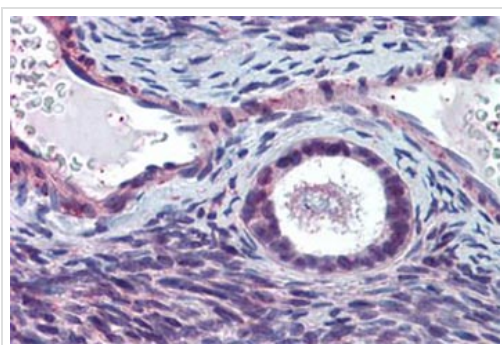
---

<b>Function</b>	Condensing enzyme that catalyzes the synthesis of monounsaturated and of polyunsaturated very long chain fatty acids Acts specifically toward polyunsaturated acyl-CoA with the higher activity toward C18:3(n-6) acyl-CoA.
<b>Tissue specificity</b>	Ubiquitous. Highly expressed in the adrenal gland and testis. Weekly expressed in prostate, lung and brain.
<b>Sequence similarities</b>	Belongs to the ELO family.
<b>Cellular localization</b>	Endoplasmic reticulum membrane.

---

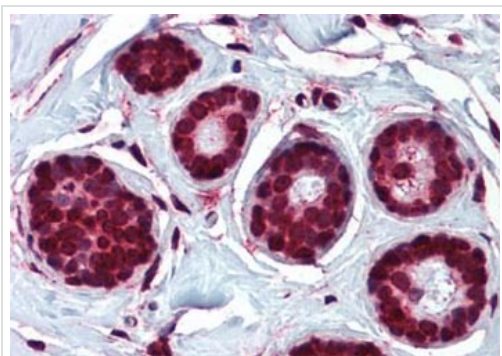
## Images

---



Immunohistochemistry (Formalin/PFA-fixed paraffin-embedded sections) - Anti-ELOVL5 antibody (ab133382)

Immunohistochemical analysis of formalin-fixed, paraffin embedded Human ovary tissue labelling ELOVL5 with ab133382 at 10µg/ml. Followed by biotinylated goat anti-rabbit IgG secondary antibody, alkaline phosphatase-streptavidin and chromogen.



Immunohistochemistry (Formalin/PFA-fixed paraffin-embedded sections) - Anti-ELOVL5 antibody (ab133382)

Immunohistochemical analysis of formalin-fixed, paraffin embedded Human breast tissue labelling ELOVL5 with ab133382 at 10µg/ml. Followed by biotinylated goat anti-rabbit IgG secondary antibody, alkaline phosphatase-streptavidin and chromogen.

**Please note:** All products are "FOR RESEARCH USE ONLY. NOT FOR USE IN DIAGNOSTIC PROCEDURES"

**Our Abpromise to you: Quality guaranteed and expert technical support**

---

- Replacement or refund for products not performing as stated on the datasheet
- Valid for 12 months from date of delivery
- Response to your inquiry within 24 hours
  
- We provide support in Chinese, English, French, German, Japanese and Spanish
- Extensive multi-media technical resources to help you
- We investigate all quality concerns to ensure our products perform to the highest standards

If the product does not perform as described on this datasheet, we will offer a refund or replacement. For full details of the Abpromise, please visit <https://www.abcam.com/abpromise> or contact our technical team.

### **Terms and conditions**

---

- Guarantee only valid for products bought direct from Abcam or one of our authorized distributors