

Product datasheet

Anti-Endo G antibody [EP1665Y] ab76122

KO VALIDATED Recombinant RabMAb[®]

[2 References](#) [2 Images](#)

Overview

Product name	Anti-Endo G antibody [EP1665Y]
Description	Rabbit monoclonal [EP1665Y] to Endo G
Host species	Rabbit
Tested applications	Suitable for: WB Unsuitable for: Flow Cyt, ICC, IHC-P or IP
Species reactivity	Reacts with: Mouse, Rat, Human
Immunogen	Synthetic peptide within Human Endo G (C terminal). The exact sequence is proprietary.
Positive control	HepG2 whole cell lysate (ab7900)
General notes	

This product is a recombinant monoclonal antibody, which offers several advantages including:

- High batch-to-batch consistency and reproducibility
- Improved sensitivity and specificity
- Long-term security of supply
- Animal-free production

For more information [see here](#).

Our RabMAb[®] technology is a patented hybridoma-based technology for making rabbit monoclonal antibodies. For details on our patents, please refer to [RabMAb[®] patents](#).

Properties

Form	Liquid
Storage instructions	Shipped at 4°C. Upon delivery aliquot and store at -20°C. Avoid freeze / thaw cycles.
Storage buffer	pH: 7.20 Preservative: 0.01% Sodium azide Constituents: 9% PBS, 40% Glycerol, 0.05% BSA, 50% Tissue culture supernatant
Purity	Tissue culture supernatant
Clonality	Monoclonal
Clone number	EP1665Y

Isotype

IgG

Applications

Our [Abpromise guarantee](#) covers the use of **ab76122** in the following tested applications.

The application notes include recommended starting dilutions; optimal dilutions/concentrations should be determined by the end user.

Application	Abreviews	Notes
WB		1/2000 - 1/5000. Detects a band of approximately 35 kDa (predicted molecular weight: 36 kDa).

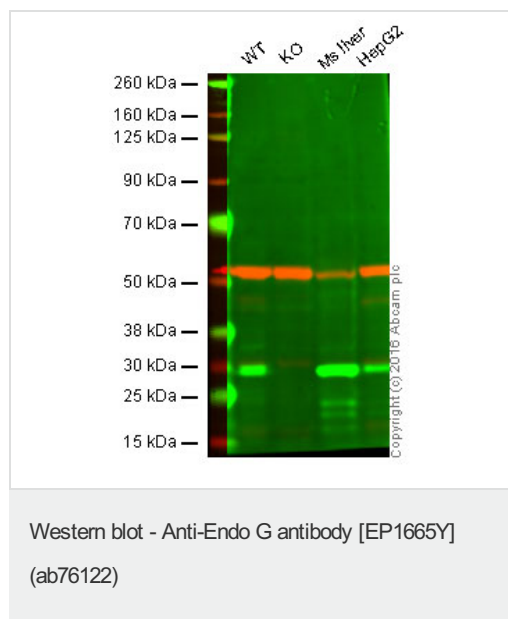
Application notes Is unsuitable for Flow Cyt, ICC, IHC-P or IP.

Target

Relevance Endo G is a nuclear encoded endonuclease that is localized in the mitochondrion. The encoded protein cleaves DNA at GC tracts. It is capable of generating the RNA primers required by DNA polymerase gamma to initiate replication of mitochondrial DNA.

Cellular localization Cytoplasmic, Mitochondrial and Nuclear

Images



Lane 1: Wild-type HAP1 cell lysate (20 µg)

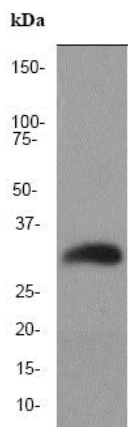
Lane 2: Endo G HAP1 cell lysate (20 µg)

Lane 3: Mouse liver tissue lysate (20 µg)

Lane 4: HepG2 cell lysate (20 µg)

Lanes 1 - 4: Merged signal (red and green). Green - ab76122 observed at 29 kDa. Red - loading control, [ab7291](#), observed at 52 kDa.

ab76122 was shown to specifically react with Endo G when Endo G knockout samples were used. Wild-type and Endo G knockout samples were subjected to SDS-PAGE. ab76122 and [ab7291](#) (loading control to alpha tubulin) were diluted 1/2000 and 1/10000 respectively and incubated overnight at 4°C. Blots were developed with Goat anti-Rabbit IgG H&L (IRDye® 800CW) preadsorbed ([ab216773](#)) and Goat anti-Mouse IgG H&L (IRDye® 680RD) preadsorbed ([ab216776](#)) secondary antibodies at 1/10000 dilution for 1 h at room temperature before imaging.



Western blot - Anti-Endo G antibody [EP1665Y]
(ab76122)

Anti-Endo G antibody [EP1665Y] (ab76122) at 1/2000 dilution +
HepG2 cell lysate at 10 µg

Secondary

HRP labelled goat anti-rabbit at 1/1000 dilution

Developed using the ECL technique.

Predicted band size: 36 kDa

Observed band size: 35 kDa

[why is the actual band size different from the predicted?](#)

Please note: All products are "FOR RESEARCH USE ONLY. NOT FOR USE IN DIAGNOSTIC PROCEDURES"

Our Abpromise to you: Quality guaranteed and expert technical support

- Replacement or refund for products not performing as stated on the datasheet
- Valid for 12 months from date of delivery
- Response to your inquiry within 24 hours

- We provide support in Chinese, English, French, German, Japanese and Spanish
- Extensive multi-media technical resources to help you
- We investigate all quality concerns to ensure our products perform to the highest standards

If the product does not perform as described on this datasheet, we will offer a refund or replacement. For full details of the Abpromise, please visit <https://www.abcam.com/abpromise> or contact our technical team.

Terms and conditions

- Guarantee only valid for products bought direct from Abcam or one of our authorized distributors