

Product datasheet

Anti-ENDOGL1/ENGL antibody [EPR15672] ab206300

Recombinant **RabMAb**

3 Images

Overview

Product name	Anti-ENDOGL1/ENGL antibody [EPR15672]
Description	Rabbit monoclonal [EPR15672] to ENDOGL1/ENGL
Host species	Rabbit
Tested applications	Suitable for: IP, WB
Species reactivity	Reacts with: Human
Immunogen	within Human ENDOGL1/ENGL aa 350 to the C-terminus. The exact sequence is proprietary. Database link: Q9Y2C4
Positive control	WB: Human fetal heart and fetal kidney lysates; HeLa, HepG2 and HUVEC whole cell lysates. IP: HUVEC whole cell lysate.

General notes

This product was previously labelled as ENDOGL1

This product is a recombinant monoclonal antibody, which offers several advantages including:

- High batch-to-batch consistency and reproducibility
- Improved sensitivity and specificity
- Long-term security of supply
- Animal-free production

For more information [see here](#).

Our RabMAb[®] technology is a patented hybridoma-based technology for making rabbit monoclonal antibodies. For details on our patents, please refer to [RabMAb[®] patents](#).

Properties

Form	Liquid
Storage instructions	Shipped at 4°C. Store at +4°C short term (1-2 weeks). Upon delivery aliquot. Store at -20°C long term. Avoid freeze / thaw cycle.
Storage buffer	Preservative: 0.01% Sodium azide Constituents: 59% PBS, 40% Glycerol, 0.05% BSA

Purity	Protein A purified
Clonality	Monoclonal
Clone number	EPR15672
Isotype	IgG

Applications

Our [Abpromise guarantee](#) covers the use of **ab206300** in the following tested applications.

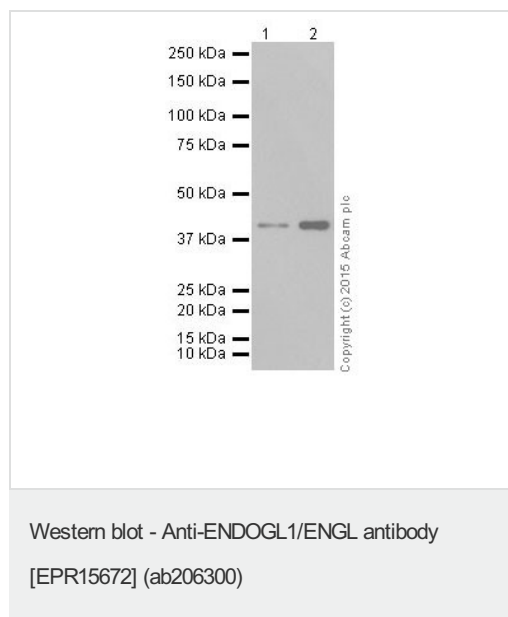
The application notes include recommended starting dilutions; optimal dilutions/concentrations should be determined by the end user.

Application	Abreviews	Notes
IP		1/40.
WB		1/1000. Detects a band of approximately 41 kDa (predicted molecular weight: 41 kDa).

Target

Function	Endo/exonuclease with nicking activity towards supercoiled DNA, a preference for single stranded DNA and 5'-3' exonuclease activity.
Tissue specificity	Ubiquitous.
Sequence similarities	Belongs to the DNA/RNA non-specific endonuclease family.
Cellular localization	Mitochondrion inner membrane.

Images



All lanes : Anti-ENDOGL1/ENGL antibody [EPR15672] (ab206300) at 1/1000 dilution

Lane 1 : Human fetal heart lysate

Lane 2 : Human fetal kidney lysate

Lysates/proteins at 10 µg per lane.

Secondary

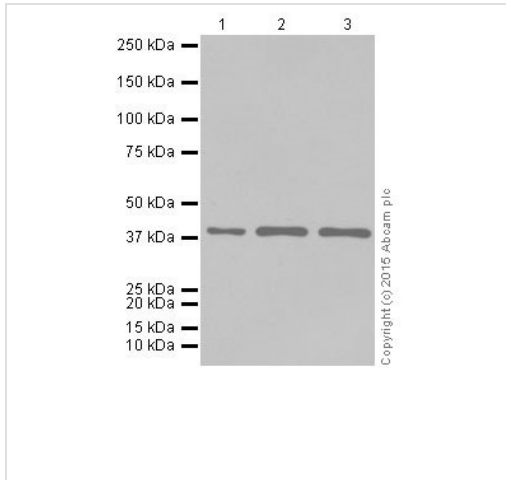
All lanes : Anti-Rabbit IgG (HRP), specific to the non-reduced form of IgG at 1/10000 dilution

Predicted band size: 41 kDa

Observed band size: 41 kDa

Exposure time: 3 minutes

Blocking/Dilution buffer: 5% NFDm/TBST.



Western blot - Anti-ENDOGL1/ENGL antibody [EPR15672] (ab206300)

All lanes : Anti-ENDOGL1/ENGL antibody [EPR15672] (ab206300) at 1/1000 dilution

Lane 1 : HeLa (Human epithelial cells from cervix adenocarcinoma) whole cell lysate

Lane 2 : HepG2 (Human liver hepatocellular carcinoma) whole cell lysate

Lane 3 : HUVEC (Human umbilical vein endothelial cell line) whole cell lysate

Lysates/proteins at 20 µg per lane.

Secondary

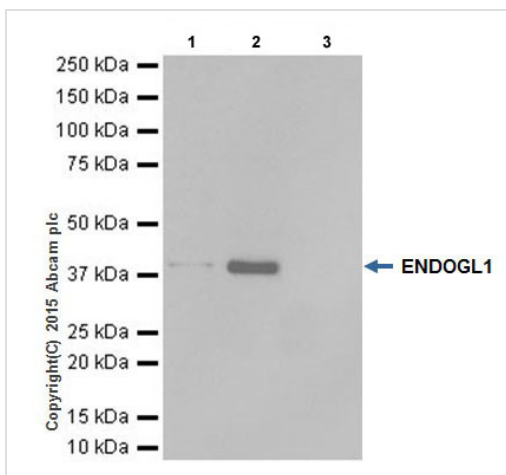
All lanes : Goat Anti-Rabbit IgG H&L (HRP) (ab97051) at 1/100000 dilution

Predicted band size: 41 kDa

Observed band size: 41 kDa

Exposure time: 3 minutes

Blocking/Dilution buffer: 5% NFDm/TBST.



Immunoprecipitation - Anti-ENDOGL1/ENGL antibody [EPR15672] (ab206300)

ENDOGL1/ENGL was immunoprecipitated from 1mg of HUVEC (Human umbilical vein endothelial cell line) whole cell lysate with ab206300 at 1/40 dilution. Western blot was performed from the immunoprecipitate using ab206300 at 1/1000 dilution. VeriBlot for IP Detection Reagent (HRP) (ab131366), was used for detection at 1/10000 dilution.

Lane 1: HUVEC whole cell lysate 10µg (Input). Lane 2: ab206300 IP in HUVEC whole cell lysate. Lane 3: Rabbit monoclonal IgG (ab172730) instead of ab206300 in HUVEC whole cell lysate.

Blocking and dilution buffer and concentration: 5% NFDm/TBST.

Exposure time: 10 seconds.

Please note: All products are "FOR RESEARCH USE ONLY. NOT FOR USE IN DIAGNOSTIC PROCEDURES"

Our Abpromise to you: Quality guaranteed and expert technical support

- Replacement or refund for products not performing as stated on the datasheet
- Valid for 12 months from date of delivery
- Response to your inquiry within 24 hours

- We provide support in Chinese, English, French, German, Japanese and Spanish
- Extensive multi-media technical resources to help you
- We investigate all quality concerns to ensure our products perform to the highest standards

If the product does not perform as described on this datasheet, we will offer a refund or replacement. For full details of the Abpromise, please visit <https://www.abcam.com/abpromise> or contact our technical team.

Terms and conditions

- Guarantee only valid for products bought direct from Abcam or one of our authorized distributors