

Product datasheet

Anti-Endoglycan antibody ab191173

2 Images

Overview

Product name	Anti-Endoglycan antibody
Description	Rabbit polyclonal to Endoglycan
Host species	Rabbit
Tested applications	Suitable for: IP, WB
Species reactivity	<p>Reacts with: Human</p> <p>Predicted to work with: Chimpanzee, Macaque monkey, Rhesus monkey, Orangutan </p>
Immunogen	<p>Synthetic peptide within Human Endoglycan aa 300-350. The exact sequence is proprietary. Sequence:</p> <p>HEEVPALPSFPQTTAPSGAEHPDEDPLGSRTSASSPLAP GDMELTPSSAT L</p> <p>Database link: Q9NZ53</p> <p style="text-align: right;"> Run BLAST with Run BLAST with </p>
Positive control	HeLa and 293T whole cell lysates.
General notes	<p>Reproducibility is key to advancing scientific discovery and accelerating scientists' next breakthrough.</p> <p>Abcam is leading the way with our range of recombinant antibodies, knockout-validated antibodies and knockout cell lines, all of which support improved reproducibility.</p> <p>We are also planning to innovate the way in which we present recommended applications and species on our product datasheets, so that only applications & species that have been tested in our own labs, our suppliers or by selected trusted collaborators are covered by our Abpromise™ guarantee.</p> <p>In preparation for this, we have started to update the applications & species that this product is Abpromise guaranteed for.</p> <p>We are also updating the applications & species that this product has been “predicted to work with,” however this information is not covered by our Abpromise guarantee.</p> <p>Applications & species from publications and Abreviews that have not been tested in our own labs or in those of our suppliers are not covered by the Abpromise guarantee.</p> <p>Please check that this product meets your needs before purchasing. If you have any questions, special requirements or concerns, please send us an inquiry and/or contact our Support team ahead of purchase. Recommended alternatives for this product can be found below, as well as customer reviews and Q&As.</p>

Properties

Form	Liquid
Storage instructions	Shipped at 4°C. Store at +4°C short term (1-2 weeks). Upon delivery aliquot. Store at -20°C long term. Avoid freeze / thaw cycle.
Storage buffer	pH: 7 Preservative: 0.09% Sodium azide Constituent: 99% Tris citrate/phosphate
	pH 7 to 8
Purity	Immunogen affinity purified
Clonality	Polyclonal
Isotype	IgG

Applications

Our [Abpromise guarantee](#) covers the use of **ab191173** in the following tested applications.

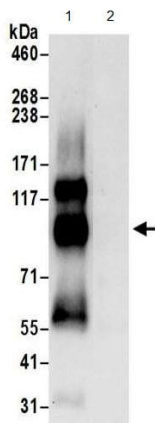
The application notes include recommended starting dilutions; optimal dilutions/concentrations should be determined by the end user.

Application	Abreviews	Notes
IP		Use at 2-10 µg/mg of lysate.
WB		1/2500 - 1/5000. Predicted molecular weight: 65 kDa.

Target

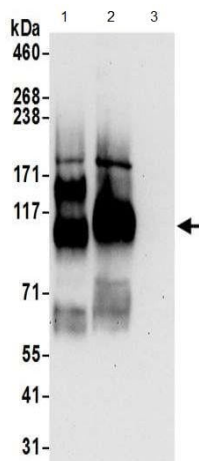
Relevance	Endoglycan is a disulfide-linked homodimeric membrane protein belonging to the podocalyxin family.
Cellular localization	Membrane; Single-pass type I membrane protein

Images



Immunoprecipitation - Anti-Endoglycan antibody (ab191173)

Immunoprecipitation of HeLa whole cell lysate using ab191173 (lane 1) at 6 µg per reaction (0.5 or 1 mg/IP; 20% of IP loaded/lane). Immunoblot analysis of Endoglycan utilised ab191173 at 1 µg/ml. The lysate in lane 2 is precipitated with an IgG control antibody. Detection utilised chemiluminescence with an exposure time of 30seconds.



Western blot - Anti-Endoglycan antibody (ab191173)

All lanes : Anti-Endoglycan antibody (ab191173) at 1 µg/ml

Lane 1 : HeLa whole cell lysate prepared using RIPA lysis buffer

Lane 2 : 293T whole cell lysate prepared using RIPA lysis buffer

Lane 3 : Jurkat whole cell lysate prepared using RIPA lysis buffer

Lysates/proteins at 50 µg per lane.

Developed using the ECL technique.

Predicted band size: 65 kDa

Exposure time: 30 seconds

Please note: All products are "FOR RESEARCH USE ONLY. NOT FOR USE IN DIAGNOSTIC PROCEDURES"

Our Promise to you: Quality guaranteed and expert technical support

- Replacement or refund for products not performing as stated on the datasheet

- Valid for 12 months from date of delivery
- Response to your inquiry within 24 hours

- We provide support in Chinese, English, French, German, Japanese and Spanish
- Extensive multi-media technical resources to help you
- We investigate all quality concerns to ensure our products perform to the highest standards

If the product does not perform as described on this datasheet, we will offer a refund or replacement. For full details of the Abpromise, please visit <https://www.abcam.com/abpromise> or contact our technical team.

Terms and conditions

- Guarantee only valid for products bought direct from Abcam or one of our authorized distributors