

Product datasheet

Anti-Endostatin/COL18A1 antibody [KT60] (HRP)
ab106491

1 Image

Overview

| | |
|----------------------------|---|
| Product name | Anti-Endostatin/COL18A1 antibody [KT60] (HRP) |
| Description | Mouse monoclonal [KT60] to Endostatin/COL18A1 (HRP) |
| Host species | Mouse |
| Conjugation | HRP |
| Tested applications | Suitable for: Sandwich ELISA |
| Species reactivity | Reacts with: Human |
| Immunogen | Recombinant full length protein corresponding to Human Endostatin/COL18A1 (N terminal). |
| General notes | This product was previously labelled as Endostatin |

Reproducibility is key to advancing scientific discovery and accelerating scientists' next breakthrough.

Abcam is leading the way with our range of recombinant antibodies, knockout-validated antibodies and knockout cell lines, all of which support improved reproducibility.

We are also planning to innovate the way in which we present recommended applications and species on our product datasheets, so that only applications & species that have been tested in our own labs, our suppliers or by selected trusted collaborators are covered by our Abpromise™ guarantee.

In preparation for this, we have started to update the applications & species that this product is Abpromise guaranteed for.

We are also updating the applications & species that this product has been “predicted to work with,” however this information is not covered by our Abpromise guarantee.

Applications & species from publications and Abreviews that have not been tested in our own labs or in those of our suppliers are not covered by the Abpromise guarantee.

Please check that this product meets your needs before purchasing. If you have any questions, special requirements or concerns, please send us an inquiry and/or contact our Support team ahead of purchase. Recommended alternatives for this product can be found below, as well as customer reviews and Q&As.

Properties

References

| | |
|-----------------------------|---|
| Form | Liquid |
| Storage instructions | Shipped at 4°C. Store at +4°C. |
| Storage buffer | Preservative: 0.01% Thimerosal (merthiolate) Constituent: PBS |
| Purity | Protein A purified |
| Purification notes | IgG is purified through a Protein A column and labelled with horseradish peroxidase |
| Clonality | Monoclonal |
| Clone number | KT60 |
| Isotype | IgG2a |

Applications

Our [Abpromise guarantee](#) covers the use of **ab106491** in the following tested applications.

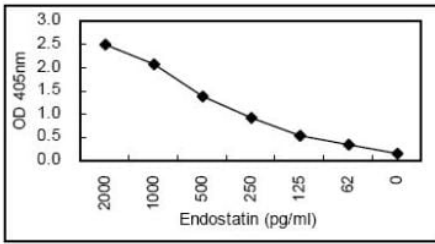
The application notes include recommended starting dilutions; optimal dilutions/concentrations should be determined by the end user.

| Application | Abreviews | Notes |
|----------------|-----------|--|
| Sandwich ELISA | | 1/1000. Can be paired for Sandwich ELISA with Mouse monoclonal [KT58] to Endostatin/COL18A1 (ab114141) . |

Target

| | |
|---|---|
| Function | COLA18A probably plays a major role in determining the retinal structure as well as in the closure of the neural tube. Endostatin potently inhibits endothelial cell proliferation and angiogenesis. May inhibit angiogenesis by binding to the heparan sulfate proteoglycans involved in growth factor signaling. |
| Tissue specificity | Present in multiple organs with highest levels in liver, lung and kidney. |
| Involvement in disease | Defects in COL18A1 are a cause of Knobloch syndrome (KNO) [MIM:267750]. KNO is an autosomal recessive disorder defined by the occurrence of high myopia, vitreoretinal degeneration with retinal detachment, macular abnormalities and occipital encephalocele. |
| Sequence similarities | Belongs to the multiplexin collagen family. Contains 1 FZ (frizzled) domain. Contains 1 TSP N-terminal (TSPN) domain. |
| Post-translational modifications | Prolines at the third position of the tripeptide repeating unit (G-X-Y) are hydroxylated in some or all of the chains. |
| Cellular localization | Secreted > extracellular space > extracellular matrix. |

Images



Sandwich ELISA - Anti-Endostatin/COL18A1 antibody [KT60] (HRP) (ab106491)

ab106491 at 1/1000 dilution detecting Endostatin/COL18A1 by sandwich ELISA. The capture antibody is a mouse monoclonal (IgG1) raised against Human Endostatin/COL18A1.

Please note: All products are "FOR RESEARCH USE ONLY. NOT FOR USE IN DIAGNOSTIC PROCEDURES"

Our Abpromise to you: Quality guaranteed and expert technical support

- Replacement or refund for products not performing as stated on the datasheet
- Valid for 12 months from date of delivery
- Response to your inquiry within 24 hours
- We provide support in Chinese, English, French, German, Japanese and Spanish
- Extensive multi-media technical resources to help you
- We investigate all quality concerns to ensure our products perform to the highest standards

If the product does not perform as described on this datasheet, we will offer a refund or replacement. For full details of the Abpromise, please visit <https://www.abcam.com/abpromise> or contact our technical team.

Terms and conditions

- Guarantee only valid for products bought direct from Abcam or one of our authorized distributors