

Product datasheet

Endothelin 1 ELISA Kit ab133030

16 References 2 Images

Overview

Product name Endothelin 1 ELISA Kit

Detection method Colorimetric

Precision

Intra-assay

Sample	n	Mean	SD	CV%
Buffer	20	35.9pg/ml		6.7%
Buffer	20	2.3pg/ml		8.9%
Buffer	20	1.1pg/ml		8.8%

Inter-assay

Sample	n	Mean	SD	CV%
Buffer	20	35.1pg/ml		8.3%
Buffer	20	2.5pg/ml		5.9%
Buffer	20	1.2pg/ml		15.3%

Sample type Cell culture supernatant, Serum, Plasma

Assay type Sandwich (quantitative)

Sensitivity 0.41 pg/ml

Range 0.78 pg/ml - 100 pg/ml

Assay time 2h 00m

Assay duration Multiple steps standard assay

Species reactivity **Reacts with:** Mouse, Rat, Rabbit, Cow, Dog, Human, Pig

Product overview Endothelin 1 ELISA kit (ET-1) is designed for the accurate quantitative measurement of Endothelin 1 in serum, plasma and culture fluids. ET-1 has identical amino acid sequence for Human, mouse, rat, cow, dog, pig, and rabbit.

Endothelin 1 specific antibody has been precoated onto 96-well plates. Standards and test

samples are added to the wells and along with an HRP-conjugated Endothelin 1 detection antibody and the microplate is then incubated at room temperature. After the removal of unbound proteins by washing, TMB is used to visualize the HRP enzymatic reaction. TMB is catalyzed by HRP to produce a colored product that changes after adding acidic stop solution. The density of coloration is directly proportional to the Endothelin 1 amount of sample captured in plate.

Notes

Endothelins (ET) are isopeptides produced by vascular endothelium that have potent vasoconstrictive activity. The peptides are encoded by three separate genes and processed to yield 39-residue "Big ET" molecules which are further processed to the 21 amino acid sequences designated ET-1, ET-2 and ET-3. ET action is mediated via binding to two receptors, ETA and ETB. Activation of ETA increases vasoconstriction and sodium retention, thereby increasing blood pressure. Activation of ETB receptors triggers the release of vasorelaxive factors such as nitric oxide (NO) and prostanoids from endothelial cells and increases urine production and elimination, thereby lowering blood pressure.

Cross Reactivity

Compound	Cross Reactivity
Endothelin 1 (ET-1)	100
ET-2	21
ET-3	3.6
Human Big ET-1	<0.1
Rat Big ET-1	<0.1
Human Big ET-2	<0.1
Human Big ET-3 Amide	<0.1

Abcam has not and does not intend to apply for the REACH Authorisation of customers' uses of products that contain European Authorisation list (Annex XIV) substances.

It is the responsibility of our customers to check the necessity of application of REACH Authorisation, and any other relevant authorisations, for their intended uses.

Platform

Microplate

Properties

Storage instructions

Store at +4°C. Please refer to protocols.

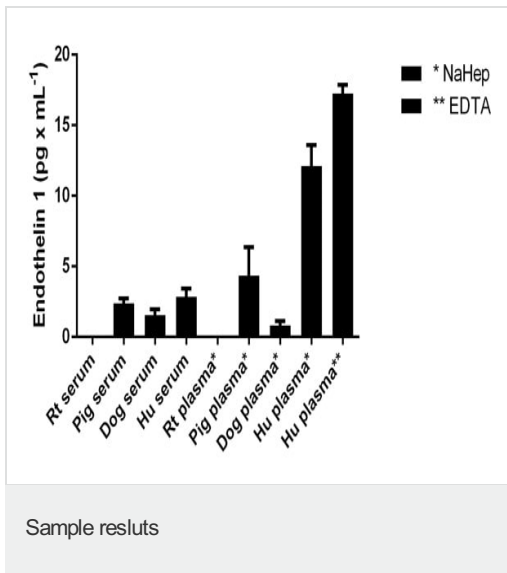
Components	1 x 96 tests
20X Wash Buffer Concentrate	1 x 100ml
Antibody Diluent	1 x 10ml
Assay Buffer 17	1 x 100ml

Components	1 x 96 tests
Endothelin 1 Antibody Concentrate	1 x 100µl
Endothelin 1 Standard	1 x 0.25ml
Mouse monoclonal Endothelin 1 Microplate (12 x 8 wells)	1 unit
Plate Sealer	3 units
Stop Solution 2	1 x 10ml
TMB Substrate	1 x 10ml

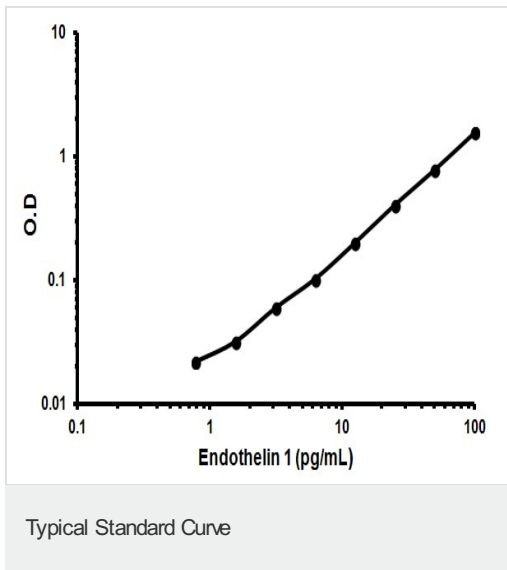
Relevance Endothelins are endothelium-derived vasoconstrictor peptides.

Cellular localization Secreted

Images



Endothelin 1 measured in biological fluids of healthy species showing quantity (pg) per mL of tested sample. Results obtained from samples that were not extracted. Samples diluted 1-9 fold.



Representative Standard Curve using ab133030.

Please note: All products are "FOR RESEARCH USE ONLY. NOT FOR USE IN DIAGNOSTIC PROCEDURES"

Our Abpromise to you: Quality guaranteed and expert technical support

- Replacement or refund for products not performing as stated on the datasheet
- Valid for 12 months from date of delivery
- Response to your inquiry within 24 hours

- We provide support in Chinese, English, French, German, Japanese and Spanish
- Extensive multi-media technical resources to help you
- We investigate all quality concerns to ensure our products perform to the highest standards

If the product does not perform as described on this datasheet, we will offer a refund or replacement. For full details of the Abpromise, please visit <https://www.abcam.com/abpromise> or contact our technical team.

Terms and conditions

- Guarantee only valid for products bought direct from Abcam or one of our authorized distributors