



Product datasheet

Anti-ENO4 antibody ab204433

3 Images

Overview

Product name	Anti-ENO4 antibody
Description	Rabbit polyclonal to ENO4
Host species	Rabbit
Tested applications	Suitable for: IHC-P, WB, ICC/IF
Species reactivity	Reacts with: Human
Immunogen	<p>Recombinant fragment corresponding to Human ENO4 aa 61-145. Sequence:</p> <p>SKLAKPPTICKIVGKDVLDGLGLPTLQVDIFCTIQNFPKN VCSVVISTHF EVHENALPELAKAEEEAERASAVSTAVQWVNSTITH</p> <p>Database link: A6NNW6</p> <p style="text-align: right;">  Run BLAST with  Run BLAST with </p>
Positive control	Human fallopian tube tissue; RT4 and U251 MG lysates; A431 cells.

Properties

Form	Liquid
Storage instructions	Shipped at 4°C. Store at +4°C short term (1-2 weeks). Upon delivery aliquot. Store at -20°C long term. Avoid freeze / thaw cycle.
Storage buffer	<p>pH: 7.20 Preservative: 0.02% Sodium azide Constituents: 40% Glycerol, PBS</p>
Purity	Immunogen affinity purified
Clonality	Polyclonal
Isotype	IgG

Applications

Our [Abpromise guarantee](#) covers the use of **ab204433** in the following tested applications.

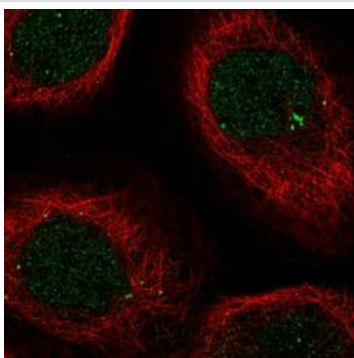
The application notes include recommended starting dilutions; optimal dilutions/concentrations should be determined by the end user.

Application	Abreviews	Notes
IHC-P		1/50 - 1/200. Perform heat mediated antigen retrieval with citrate buffer pH 6 before commencing with IHC staining protocol.
WB		1/100 - 1/250. Predicted molecular weight: 69 kDa.
ICC/IF		Use a concentration of 1 - 4 µg/ml.

Target

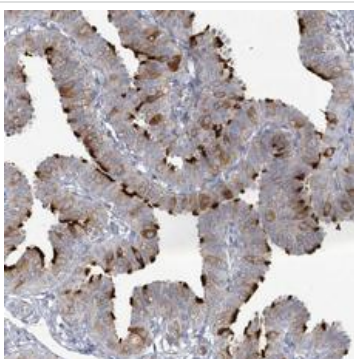
Sequence similarities Belongs to the enolase family.

Images



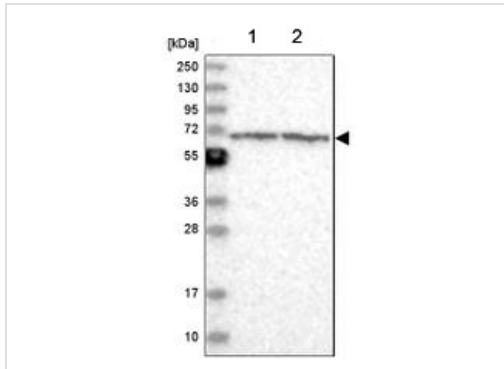
Immunofluorescent analysis of A431 cells (PFA-fixed/Triton X-100 permeabilized) labeling ENO4 with ab204433 at 4 µg/mL.

Immunocytochemistry/ Immunofluorescence - Anti-ENO4 antibody (ab204433)



Immunohistochemical analysis of paraffin-embedded human fallopian tube tissue labeling ENO4 with ab204433 at 1/50 dilution.

Immunohistochemistry (Formalin/PFA-fixed paraffin-embedded sections) - Anti-ENO4 antibody (ab204433)



Western blot - Anti-ENO4 antibody (ab204433)

All lanes : Anti-ENO4 antibody (ab204433) at 1/100 dilution

Lane 1 : RT4 lysate

Lane 2 : U251 MG lysate

Developed using the ECL technique.

Predicted band size: 69 kDa

Please note: All products are "FOR RESEARCH USE ONLY. NOT FOR USE IN DIAGNOSTIC PROCEDURES"

Our Abpromise to you: Quality guaranteed and expert technical support

- Replacement or refund for products not performing as stated on the datasheet
- Valid for 12 months from date of delivery
- Response to your inquiry within 24 hours
- We provide support in Chinese, English, French, German, Japanese and Spanish
- Extensive multi-media technical resources to help you
- We investigate all quality concerns to ensure our products perform to the highest standards

If the product does not perform as described on this datasheet, we will offer a refund or replacement. For full details of the Abpromise, please visit <https://www.abcam.com/abpromise> or contact our technical team.

Terms and conditions

- Guarantee only valid for products bought direct from Abcam or one of our authorized distributors