


Product datasheet

Anti-EPB41L1 antibody [EPR11091] ab179809

Recombinant RabMAb

4 Images

Overview

<b>Product name</b>	Anti-EPB41L1 antibody [EPR11091]
<b>Description</b>	Rabbit monoclonal [EPR11091] to EPB41L1
<b>Host species</b>	Rabbit
<b>Tested applications</b>	<b>Suitable for:</b> Flow Cyt (Intra), WB, IP <b>Unsuitable for:</b> ICC/IF or IHC-P
<b>Species reactivity</b>	<b>Reacts with:</b> Mouse, Human <b>Predicted to work with:</b> Rat 
<b>Immunogen</b>	Synthetic peptide. This information is proprietary to Abcam and/or its suppliers.
<b>Positive control</b>	Human fetal brain lysate; Neuro-2a cells.
<b>General notes</b>	This product is a recombinant monoclonal antibody, which offers several advantages including: <ul style="list-style-type: none"> <li>- High batch-to-batch consistency and reproducibility</li> <li>- Improved sensitivity and specificity</li> <li>- Long-term security of supply</li> <li>- Animal-free production</li> </ul> For more information <a href="#">see here</a> . Our RabMAb <sup>®</sup> technology is a patented hybridoma-based technology for making rabbit monoclonal antibodies. For details on our patents, please refer to <a href="#">RabMAb<sup>®</sup> patents</a> .

Properties

<b>Form</b>	Liquid
<b>Storage instructions</b>	Shipped at 4°C. Store at +4°C short term (1-2 weeks). Upon delivery aliquot. Store at -20°C long term. Avoid freeze / thaw cycle.
<b>Storage buffer</b>	pH: 7.20 Preservative: 0.01% Sodium azide Constituents: 9% PBS, 40% Glycerol (glycerin, glycerine), 0.05% BSA, 50% Tissue culture supernatant
<b>Purity</b>	Tissue culture supernatant
<b>Clonality</b>	Monoclonal

**Clone number**                      EPR11091

**Isotype**                                IgG

## Applications

---

**The Abpromise guarantee**            Our [Abpromise guarantee](#) covers the use of ab179809 in the following tested applications. The application notes include recommended starting dilutions; optimal dilutions/concentrations should be determined by the end user.

Application	Abreviews	Notes
<b>Flow Cyt (Intra)</b>		1/10 - 1/100. <a href="#">ab172730</a> - Rabbit monoclonal IgG, is suitable for use as an isotype control with this antibody.
<b>WB</b>		1/1000 - 1/5000. Detects a band of approximately 135 kDa (predicted molecular weight: 99 kDa).
<b>IP</b>		1/10 - 1/100.

**Application notes**                      Is unsuitable for ICC/IF or IHC-P.

## Target

---

**Function**                                      May function to confer stability and plasticity to neuronal membrane via multiple interactions, including the spectrin-actin-based cytoskeleton, integral membrane channels and membrane-associated guanylate kinases.

**Tissue specificity**                          Highest expression in brain, lower in heart, kidney, pancreas, placenta, lung and skeletal muscle.

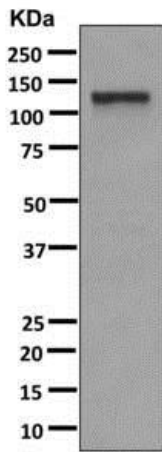
**Sequence similarities**                      Contains 1 FERM domain.

**Cellular localization**                      Cytoplasm > cytoskeleton.

---

## Images

---



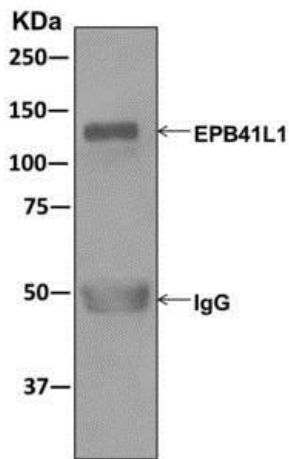
Western blot - Anti-EPB41L1 antibody [EPR11091] (ab179809)

Anti-EPB41L1 antibody [EPR11091] (ab179809) at 1/1000 dilution  
+ Human fetal brain lysate at 10 µg

**Secondary**

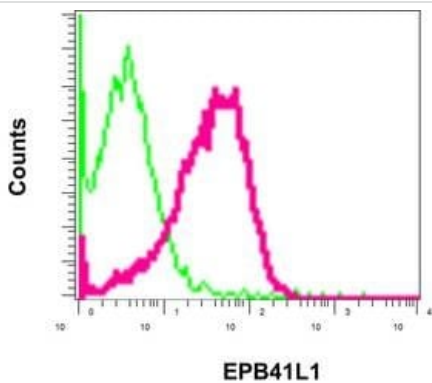
HRP labelled goat anti-rabbit at 1/2000 dilution

**Predicted band size:** 99 kDa



Immunoprecipitation - Anti-EPB41L1 antibody [EPR11091] (ab179809)

Immunoprecipitation. [ab178909](#) at 1/1000 for WB labeling EPB41L1 in Human fetal brain lysate immunoprecipitated using [ab178909](#) at 1/10.



Flow Cytometry (Intracellular) - Anti-EPB41L1 antibody [EPR11091] (ab179809)

Intracellular flow cytometrical analysis of permeabilized Neuro-2a cells labeling EPB41L1 with [ab178909](#) at 1/10 (red) or a rabbit IgG (negative) (green).

### Why choose a recombinant antibody?



**Research with confidence**  
Consistent and reproducible results



**Long-term and scalable supply**  
Recombinant technology



**Success from the first experiment**  
Confirmed specificity



**Ethical standards compliant**  
Animal-free production

Anti-EPB41L1 antibody [EPR11091] (ab179809)

**Please note:** All products are "FOR RESEARCH USE ONLY. NOT FOR USE IN DIAGNOSTIC PROCEDURES"

### Our Abpromise to you: Quality guaranteed and expert technical support

---

- Replacement or refund for products not performing as stated on the datasheet
- Valid for 12 months from date of delivery
- Response to your inquiry within 24 hours
- We provide support in Chinese, English, French, German, Japanese and Spanish
- Extensive multi-media technical resources to help you
- We investigate all quality concerns to ensure our products perform to the highest standards

If the product does not perform as described on this datasheet, we will offer a refund or replacement. For full details of the Abpromise, please visit <https://www.abcam.com/abpromise> or contact our technical team.

### Terms and conditions

---

- Guarantee only valid for products bought direct from Abcam or one of our authorized distributors