

Product datasheet

Anti-EPCR/CD201 antibody [OT112H5] ab236517

8 Images

Overview

Product name	Anti-EPCR/CD201 antibody [OT112H5]
Description	Mouse monoclonal [OT112H5] to EPCR/CD201
Host species	Mouse
Tested applications	Suitable for: WB, IHC-P
Species reactivity	Reacts with: Human
Immunogen	Recombinant fragment corresponding to Human EPCR/CD201 aa 1-210. Produced in HEK-293T cells (NP_006395). Sequence: MLTLLPILLLSGWAFCSQDASDGLQRLHMLQISYFRDPYH VWYQGNASL GGHLTHVLEGPDTNTTIQLQPLQEPESWARTQSGGLQSYLL QFHGLVRLV HQERTLAFPLTIRCFLGCELPPEGSRAHVFFEVAVNGSSF VSFRPERALW QADTQVTSGVVFTLQQLNAYNRTRYELREFLEDTCVQYV QKHISAENTK GSQTSRSYTS

Database link: [Q9UNN8](#)

 [Run BLAST with](#)

 [Run BLAST with](#)

Positive control WB: pCMV6-ENTRY EPCR/CD201 cDNA transfected HEK-293T cell lysate. IHC-P: Human breast, colon, colon adenocarcinoma, lung, endometrium, prostate and bladder tissues.

General notes

Reproducibility is key to advancing scientific discovery and accelerating scientists' next breakthrough.

Abcam is leading the way with our range of recombinant antibodies, knockout-validated antibodies and knockout cell lines, all of which support improved reproducibility.

We are also planning to innovate the way in which we present recommended applications and species on our product datasheets, so that only applications & species that have been tested in our own labs, our suppliers or by selected trusted collaborators are covered by our Abpromise™ guarantee.

In preparation for this, we have started to update the applications & species that this product is Abpromise guaranteed for.

We are also updating the applications & species that this product has been "predicted to work

with," however this information is not covered by our Abpromise guarantee.

Applications & species from publications and Abreviews that have not been tested in our own labs or in those of our suppliers are not covered by the Abpromise guarantee.

Please check that this product meets your needs before purchasing. If you have any questions, special requirements or concerns, please send us an inquiry and/or contact our Support team ahead of purchase. Recommended alternatives for this product can be found below, as well as customer reviews and Q&As.

Properties

Form	Liquid
Storage instructions	Shipped at 4°C. Store at +4°C short term (1-2 weeks). Upon delivery aliquot. Store at -20°C long term. Avoid freeze / thaw cycle.
Storage buffer	pH: 7.30 Preservative: 0.02% Sodium azide Constituents: PBS, 1% BSA, 50% Glycerol
Purity	Affinity purified
Purification notes	Purified from cell culture supernatant.
Clonality	Monoclonal
Clone number	OT112H5
Isotype	IgG2b

Applications

Our [Abpromise guarantee](#) covers the use of **ab236517** in the following tested applications.

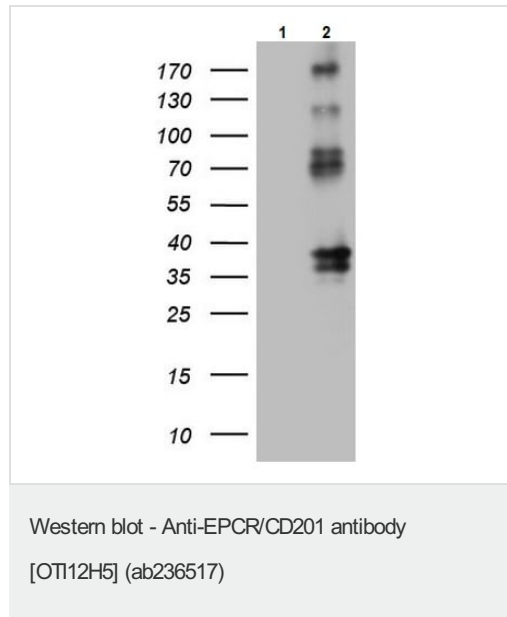
The application notes include recommended starting dilutions; optimal dilutions/concentrations should be determined by the end user.

Application	Abreviews	Notes
WB		1/2000. Predicted molecular weight: 27 kDa.
IHC-P		1/150. Heat-induced epitope retrieval by 1 mM EDTA in 10 mM Tris buffer (pH 8.5) at 120°C for 3 minutes

Target

Function	Binds activated protein C. Enhances protein C activation by the thrombin-thrombomodulin complex; plays a role in the protein C pathway controlling blood coagulation.
Tissue specificity	Expressed strongly in the endothelial cells of arteries and veins in heart and lung, less intensely in capillaries in the lung and skin, and not at all in the endothelium of small vessels of the liver and kidney.
Post-translational modifications	N-glycosylated. A soluble form exists; probably released by a metalloprotease. Seems to have the same activity as the membrane-bound form.

Images



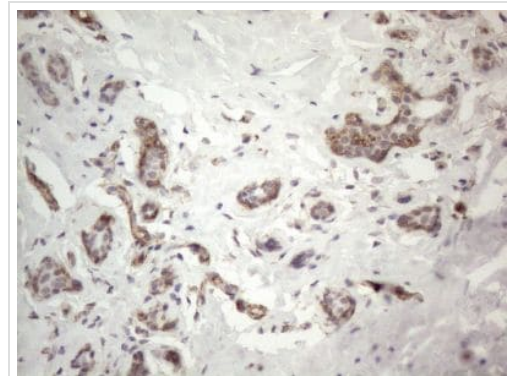
All lanes : Anti-EPCR/CD201 antibody [OT112H5] (ab236517) at 1/2000 dilution

Lane 1 : pCMV6-ENTRY control cDNA transfected HEK-293T (human epithelial cell line from embryonic kidney transformed with large T antigen) cell lysate

Lane 2 : pCMV6-ENTRY EPCR/CD201 cDNA transfected HEK-293T cell lysate

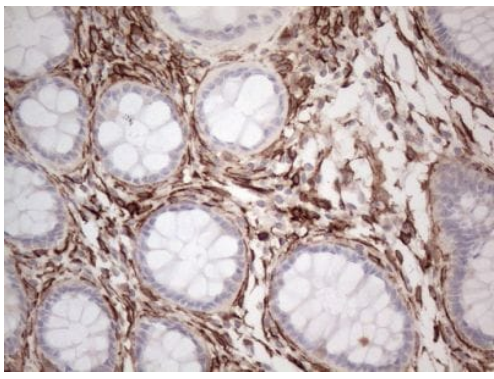
Lysates/proteins at 5 µg per lane.

Predicted band size: 27 kDa



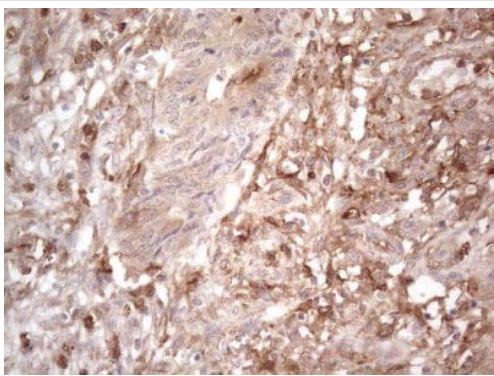
Paraffin-embedded human breast tissue stained for EPCR/CD201 using ab236517 at 1/150 dilution in immunohistochemical analysis.

Immunohistochemistry (Formalin/PFA-fixed paraffin-embedded sections) - Anti-EPCR/CD201 antibody [OT112H5] (ab236517)



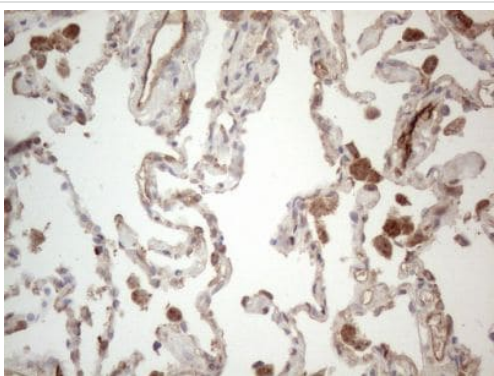
Immunohistochemistry (Formalin/PFA-fixed paraffin-embedded sections) - Anti-EPCR/CD201 antibody [OT12H5] (ab236517)

Paraffin-embedded human colon tissue stained for EPCR/CD201 using ab236517 at 1/150 dilution in immunohistochemical analysis.



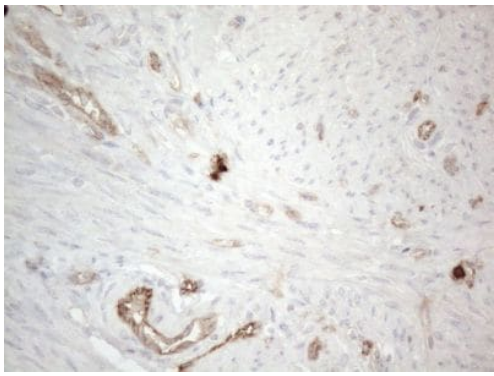
Immunohistochemistry (Formalin/PFA-fixed paraffin-embedded sections) - Anti-EPCR/CD201 antibody [OT12H5] (ab236517)

Paraffin-embedded human colon adenocarcinoma tissue stained for EPCR/CD201 using ab236517 at 1/150 dilution in immunohistochemical analysis.



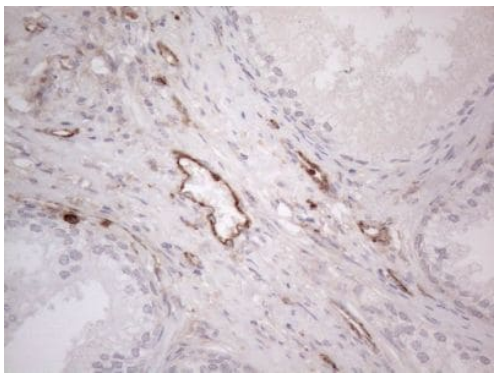
Immunohistochemistry (Formalin/PFA-fixed paraffin-embedded sections) - Anti-EPCR/CD201 antibody [OT12H5] (ab236517)

Paraffin-embedded human lung tissue stained for EPCR/CD201 using ab236517 at 1/150 dilution in immunohistochemical analysis.



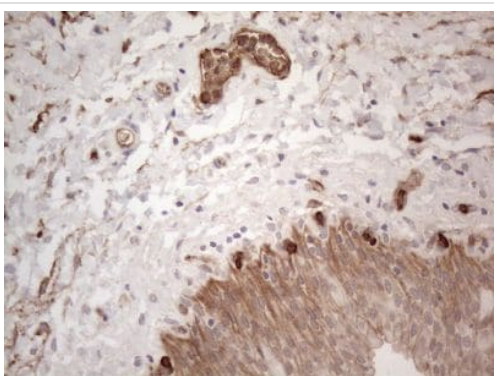
Immunohistochemistry (Formalin/PFA-fixed paraffin-embedded sections) - Anti-EPCR/CD201 antibody [OT112H5] (ab236517)

Paraffin-embedded human endometrium tissue stained for EPCR/CD201 using ab236517 at 1/150 dilution in immunohistochemical analysis.



Immunohistochemistry (Formalin/PFA-fixed paraffin-embedded sections) - Anti-EPCR/CD201 antibody [OT112H5] (ab236517)

Paraffin-embedded human prostate tissue stained for EPCR/CD201 using ab236517 at 1/150 dilution in immunohistochemical analysis.



Immunohistochemistry (Formalin/PFA-fixed paraffin-embedded sections) - Anti-EPCR/CD201 antibody [OT112H5] (ab236517)

Paraffin-embedded human bladder tissue stained for EPCR/CD201 using ab236517 at 1/150 dilution in immunohistochemical analysis.

Please note: All products are "FOR RESEARCH USE ONLY. NOT FOR USE IN DIAGNOSTIC PROCEDURES"

Our Abpromise to you: Quality guaranteed and expert technical support

- Replacement or refund for products not performing as stated on the datasheet
- Valid for 12 months from date of delivery
- Response to your inquiry within 24 hours

- We provide support in Chinese, English, French, German, Japanese and Spanish
- Extensive multi-media technical resources to help you
- We investigate all quality concerns to ensure our products perform to the highest standards

If the product does not perform as described on this datasheet, we will offer a refund or replacement. For full details of the Abpromise, please visit <https://www.abcam.com/abpromise> or contact our technical team.

Terms and conditions

- Guarantee only valid for products bought direct from Abcam or one of our authorized distributors