

Product datasheet

Anti-EPF antibody [EPR4476] ab108600

Recombinant **RabMAb**

★★★★☆ 4 Abreviews 4 References 9 Images

Overview

Product name	Anti-EPF antibody [EPR4476]
Description	Rabbit monoclonal [EPR4476] to EPF
Host species	Rabbit
Tested applications	Suitable for: WB, IP, IHC-P, ICC/IF Unsuitable for: Flow Cyt
Species reactivity	Reacts with: Mouse, Rat, Human
Immunogen	Synthetic peptide within Human EPF aa 50-150. The exact sequence is proprietary.
Positive control	WB: A431, Neuro-2a, A549, and MCF7 cell lysates IHC-P: Human colon and kidney tissues ICC/IF: HeLa cells
General notes	Our RabMAb [®] technology is a patented hybridoma-based technology for making rabbit monoclonal antibodies. For details on our patents, please refer to RabMAb[®] patents . This product is a recombinant rabbit monoclonal antibody .

Properties

Form	Liquid
Storage instructions	Shipped at 4°C. Store at -20°C. Stable for 12 months at -20°C.
Storage buffer	pH: 7.20 Preservative: 0.05% Sodium azide Constituents: 0.1% BSA, 40% Glycerol, 9.85% Tris glycine, 50% Tissue culture supernatant
Purity	Tissue culture supernatant
Clonality	Monoclonal
Clone number	EPR4476
Isotype	IgG

Applications

Our [Abpromise guarantee](#) covers the use of **ab108600** in the following tested applications.

The application notes include recommended starting dilutions; optimal dilutions/concentrations should be determined by the end user.

Application	Abreviews	Notes
WB	★★★★★	1/10000 - 1/50000. Detects a band of approximately 11 kDa (predicted molecular weight: 11 kDa).
IP	★☆☆☆☆	1/10 - 1/100.
IHC-P		1/250 - 1/500.
ICC/IF		1/100 - 1/250.

Application notes Is unsuitable for Flow Cyt.

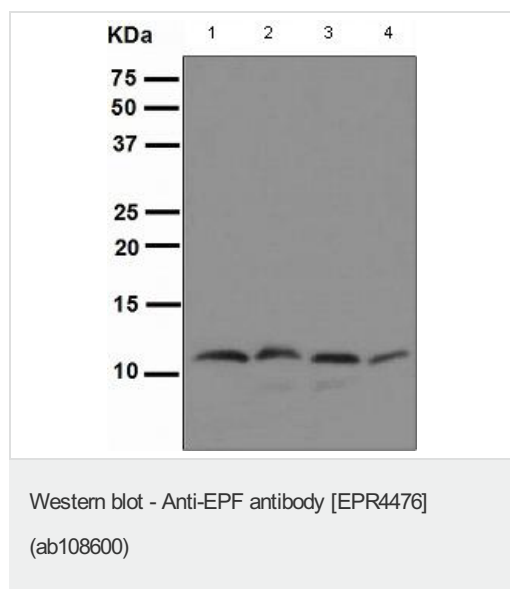
Target

Function Eukaryotic CPN10 homolog which is essential for mitochondrial protein biogenesis, together with CPN60. Binds to CPN60 in the presence of Mg-ATP and suppresses the ATPase activity of the latter.

Sequence similarities Belongs to the GroES chaperonin family.

Cellular localization Mitochondrion matrix.

Images



All lanes : Anti-EPF antibody [EPR4476] (ab108600) at 1/10000 dilution

Lane 1 : A431 cell lysate

Lane 2 : Neuro-2a cell lysate

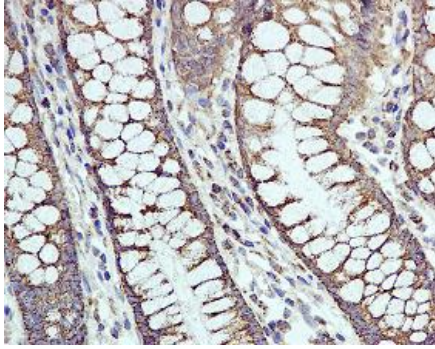
Lane 3 : A549 cell lysate

Lane 4 : MCF7 cell lysate

Lysates/proteins at 10 µg per lane.

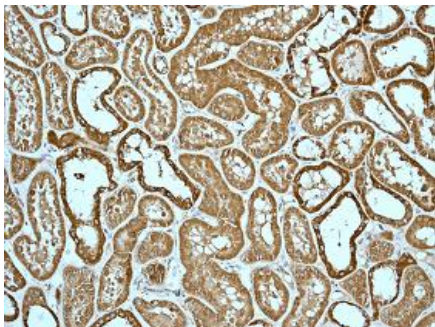
Predicted band size: 11 kDa

Observed band size: 11 kDa



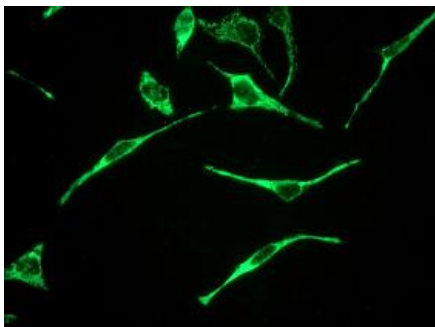
Immunohistochemistry (Formalin/PFA-fixed paraffin-embedded sections) - Anti-EPF antibody [EPR4476] (ab108600)

Immunohistochemical staining of EPF in paraffin embedded Human colon tissue, using ab108600 at a dilution of 1/250.



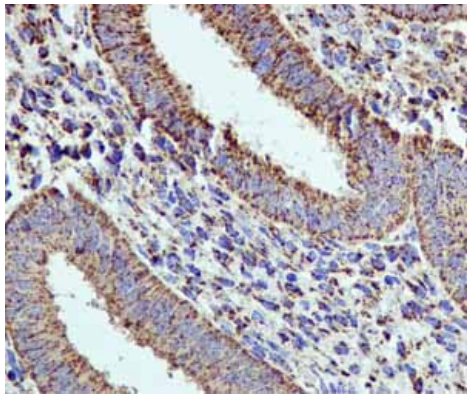
Immunohistochemistry (Formalin/PFA-fixed paraffin-embedded sections) - Anti-EPF antibody [EPR4476] (ab108600)

Immunohistochemical staining of EPF in paraffin embedded Human kidney tissue, using ab108600 at a dilution of 1/250.



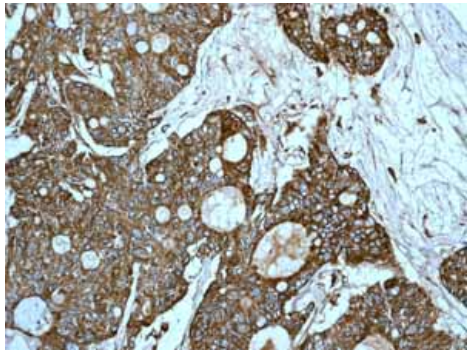
Immunocytochemistry/ Immunofluorescence - Anti-EPF antibody [EPR4476] (ab108600)

Immunofluorescent staining of EPF in HeLa cells, using ab108600 at a dilution of 1/100.



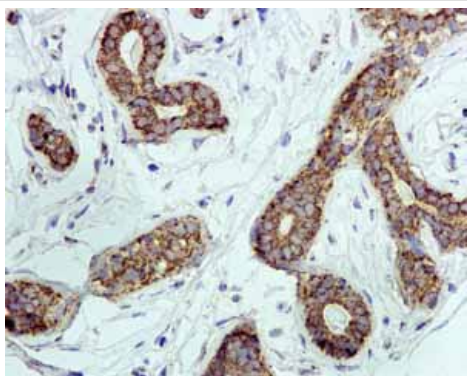
ab108600 showing positive staining in Normal uterus tissue.

Immunohistochemistry (Formalin/PFA-fixed paraffin-embedded sections) - Anti-EPF antibody [EPR4476] (ab108600)



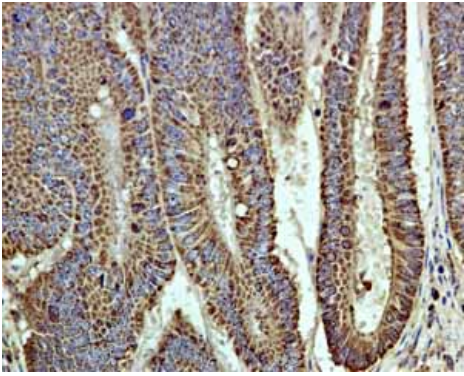
ab108600 showing positive staining in Ovarian carcinoma tissue.

Immunohistochemistry (Formalin/PFA-fixed paraffin-embedded sections) - Anti-EPF antibody [EPR4476] (ab108600)



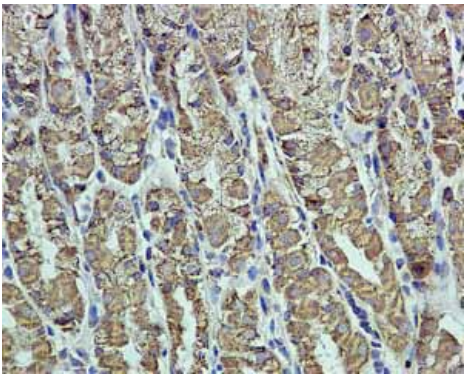
ab108600 showing positive staining in Normal breast tissue.

Immunohistochemistry (Formalin/PFA-fixed paraffin-embedded sections) - Anti-EPF antibody [EPR4476] (ab108600)



ab108600 showing positive staining in Colonic adenocarcinoma tissue.

Immunohistochemistry (Formalin/PFA-fixed paraffin-embedded sections) - Anti-EPF antibody [EPR4476] (ab108600)



ab108600 showing positive staining in Normal stomach tissue.

Immunohistochemistry (Formalin/PFA-fixed paraffin-embedded sections) - Anti-EPF antibody [EPR4476] (ab108600)

Please note: All products are "FOR RESEARCH USE ONLY. NOT FOR USE IN DIAGNOSTIC PROCEDURES"

Our Abpromise to you: Quality guaranteed and expert technical support

- Replacement or refund for products not performing as stated on the datasheet
- Valid for 12 months from date of delivery
- Response to your inquiry within 24 hours

- We provide support in Chinese, English, French, German, Japanese and Spanish
- Extensive multi-media technical resources to help you
- We investigate all quality concerns to ensure our products perform to the highest standards

If the product does not perform as described on this datasheet, we will offer a refund or replacement. For full details of the Abpromise, please visit <https://www.abcam.com/abpromise> or contact our technical team.

Terms and conditions

- Guarantee only valid for products bought direct from Abcam or one of our authorized distributors