


Product datasheet

Anti-Eph receptor A2 antibody ab78002

2 References 1 Image

Overview

Product name	Anti-Eph receptor A2 antibody
Description	Rabbit polyclonal to Eph receptor A2
Host species	Rabbit
Tested applications	Suitable for: WB, IHC-P
Species reactivity	Reacts with: Human Predicted to work with: Mouse, Rat, Horse, Cow, Dog, Chimpanzee, Monkey 
Immunogen	Synthetic peptide, corresponding to a portion of the amino acids 450-500 of Human Eph receptor A2
Positive control	Pancreas tissue.

Properties

Form	Liquid
Storage instructions	Shipped at 4°C. Store at +4°C short term (1-2 weeks). Upon delivery aliquot. Store at -20°C. Avoid freeze / thaw cycle.
Storage buffer	Preservative: 0.05% Sodium azide Constituents: 0.2% Gelatin, PBS
Purity	Immunogen affinity purified
Clonality	Polyclonal
Isotype	IgG

Applications

Our [Abpromise guarantee](#) covers the use of **ab78002** in the following tested applications.

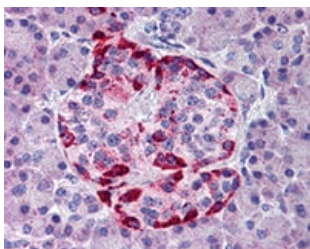
The application notes include recommended starting dilutions; optimal dilutions/concentrations should be determined by the end user.

Application	Abreviews	Notes
WB		Use a concentration of 0.5 - 2 µg/ml. Predicted molecular weight: 108 kDa.
IHC-P		Use a concentration of 10 µg/ml.

Target

Function	Receptor for members of the ephrin-A family. Binds to ephrin-A1, -A3, -A4 and -A5. Plays an important role in angiogenesis and tumor neovascularization. The recruitment of VAV2, VAV3 and PI3-kinase p85 subunit by phosphorylated EPHA2 is critical for EFNA1-induced RAC1 GTPase activation and vascular endothelial cell migration and assembly (By similarity). Induces apoptosis in a p53/TP53-independent, caspase-8-dependent manner.
Tissue specificity	Expressed in brain and glioma tissue and glioma cell lines (at protein level). Expressed most highly in tissues that contain a high proportion of epithelial cells, e.g., skin, intestine, lung, and ovary.
Involvement in disease	<p>Genetic variations in EPHA2 are the cause of susceptibility to cataract cortical age-related type 2 (ARCC2) [MIM:613020]. A developmental punctate opacity common in the cortex and present in most lenses. The cataract is white or cerulean, increases in number with age, but rarely affects vision.</p> <p>Defects in EPHA2 are the cause of cataract posterior polar type 1 (CTPP1) [MIM:116600]. A subcapsular opacity, usually disk-shaped, located at the back of the lens. It can have a marked effect on visual acuity.</p>
Sequence similarities	<p>Belongs to the protein kinase superfamily. Tyr protein kinase family. Ephrin receptor subfamily. Contains 2 fibronectin type-III domains.</p> <p>Contains 1 protein kinase domain.</p> <p>Contains 1 SAM (sterile alpha motif) domain.</p>
Post-translational modifications	Activated by EFNA1 via tyrosine phosphorylation. Phosphorylated residues Tyr-588 and Tyr-594 are required for binding VAV2 and VAV3 while phosphorylated residues Tyr-735 and Tyr-930 are required for binding PI3-kinase p85 subunit. These phosphorylated residues are critical for recruitment of VAV2 and VAV3 and PI3-kinase p85 subunit which transduce downstream signaling to activate RAC1 GTPase and endothelial cell migration. They also play a critical role in transducing EPHA2 signaling in vascular endothelial cells during tumor angiogenesis.
Cellular localization	Membrane.

Images



ab78002, at 10µg/ml, staining Eph receptor A2 in human pancreas tissue by Immunohistochemistry using formalin-fixed, paraffin-embedded tissue.

Immunohistochemistry (Formalin/PFA-fixed paraffin-embedded sections) - Anti-Eph receptor A2 antibody (ab78002)

Please note: All products are "FOR RESEARCH USE ONLY. NOT FOR USE IN DIAGNOSTIC PROCEDURES"

Our Abpromise to you: Quality guaranteed and expert technical support

- Replacement or refund for products not performing as stated on the datasheet
- Valid for 12 months from date of delivery
- Response to your inquiry within 24 hours

- We provide support in Chinese, English, French, German, Japanese and Spanish
- Extensive multi-media technical resources to help you
- We investigate all quality concerns to ensure our products perform to the highest standards

If the product does not perform as described on this datasheet, we will offer a refund or replacement. For full details of the Abpromise, please visit <https://www.abcam.com/abpromise> or contact our technical team.

Terms and conditions

- Guarantee only valid for products bought direct from Abcam or one of our authorized distributors