


Product datasheet

Anti-Eph receptor A7/EPHA7 (phospho Y791) antibody ab192585

1 Image

Overview

Product name	Anti-Eph receptor A7/EPHA7 (phospho Y791) antibody
Description	Rabbit polyclonal to Eph receptor A7/EPHA7 (phospho Y791)
Host species	Rabbit
Specificity	ab192585 detects endogenous levels of Eph receptor A7/EPHA7 only when phosphorylated at tyrosine 791.
Tested applications	Suitable for: WB
Species reactivity	Reacts with: Human Predicted to work with: Mouse, Rat 
Immunogen	Synthetic peptide corresponding to Human Eph receptor A7/EPHA7 (phospho Y791) conjugated to keyhole limpet haemocyanin. Peptide sequence around phosphorylation site of tyrosine 791 (A-V-Y(p)-T-T). Database link: Q15375
Positive control	JK cell extracts.
General notes	This product was previously labelled as Eph receptor A7

Properties

Form	Liquid
Storage instructions	Shipped at 4°C. Store at +4°C short term (1-2 weeks). Upon delivery aliquot. Store at -20°C long term. Avoid freeze / thaw cycle.
Storage buffer	pH: 7.40 Preservative: 0.02% Sodium azide Constituents: 0.87% Sodium chloride, 50% Glycerol, 49% PBS PBS (without Mg ²⁺ and Ca ²⁺)
Purity	Immunogen affinity purified
Purification notes	ab192585 was purified by affinity-chromatography using epitope-specific phosphopeptide. Non-phospho specific antibodies were removed by chromatography using non-phosphopeptide.

Clonality	Polyclonal
Isotype	IgG

Applications

Our [Abpromise guarantee](#) covers the use of **ab192585** in the following tested applications.

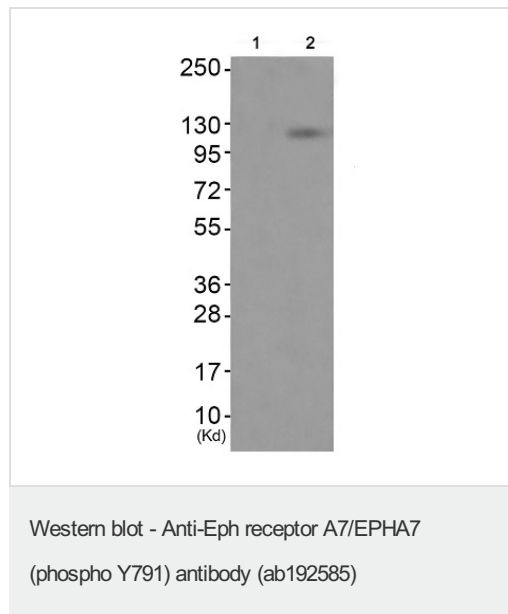
The application notes include recommended starting dilutions; optimal dilutions/concentrations should be determined by the end user.

Application	Abreviews	Notes
WB		1/500 - 1/1000. Predicted molecular weight: 112 kDa.

Target

Function	Receptor for members of the ephrin-A family. Binds to ephrin-A1, -A2, -A3, -A4 and -A5.
Tissue specificity	Widely expressed.
Sequence similarities	Belongs to the protein kinase superfamily. Tyr protein kinase family. Ephrin receptor subfamily. Contains 2 fibronectin type-III domains. Contains 1 protein kinase domain. Contains 1 SAM (sterile alpha motif) domain.
Cellular localization	Membrane.

Images



All lanes : Anti-Eph receptor A7/EPHA7 (phospho Y791) antibody (ab192585) at 1/500 dilution

Lane 1 : JK cell extract with antigen specific peptide

Lane 2 : JK cell extract

Predicted band size: 112 kDa

Please note: All products are "FOR RESEARCH USE ONLY. NOT FOR USE IN DIAGNOSTIC PROCEDURES"

Our Abpromise to you: Quality guaranteed and expert technical support

- Replacement or refund for products not performing as stated on the datasheet
- Valid for 12 months from date of delivery
- Response to your inquiry within 24 hours

- We provide support in Chinese, English, French, German, Japanese and Spanish
- Extensive multi-media technical resources to help you
- We investigate all quality concerns to ensure our products perform to the highest standards

If the product does not perform as described on this datasheet, we will offer a refund or replacement. For full details of the Abpromise, please visit <https://www.abcam.com/abpromise> or contact our technical team.

Terms and conditions

- Guarantee only valid for products bought direct from Abcam or one of our authorized distributors