

Product datasheet

Anti-Eph receptor B3 (phospho Y608) antibody
ab191502

1 Image

Overview

Product name	Anti-Eph receptor B3 (phospho Y608) antibody
Description	Rabbit polyclonal to Eph receptor B3 (phospho Y608)
Host species	Rabbit
Specificity	ab191502 detects endogenous levels of Eph receptor B3 protein only when phosphorylated at Tyr608.
Tested applications	Suitable for: WB
Species reactivity	Reacts with: Mouse, Rat, Human
Immunogen	Synthetic peptide corresponding to Human Eph receptor B3 (phospho Y608). [Synthetic phosphopeptide derived from Human EphB3 around the phosphorylation site of Tyrosine 608.] Database link: P54753
Positive control	HeLa, NIH 3T3 and PC12 whole cell lysates.

Properties

Form	Liquid
Storage instructions	Shipped at 4°C. Store at +4°C short term (1-2 weeks). Upon delivery aliquot. Store at -20°C long term. Avoid freeze / thaw cycle.
Storage buffer	Preservative: 0.1% Sodium azide Constituents: 49% PBS, 50% Glycerol
Purity	Immunogen affinity purified
Purification notes	ab191502 was affinity-purified from rabbit antiserum by affinity-chromatography using epitope-specific immunogen and the purity is > 95% (by SDS-PAGE).
Clonality	Polyclonal
Isotype	IgG

Applications

Our [Abpromise guarantee](#) covers the use of **ab191502** in the following tested applications.

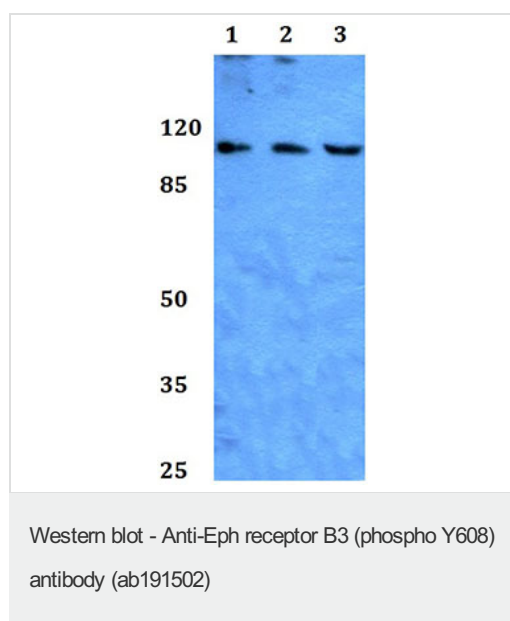
The application notes include recommended starting dilutions; optimal dilutions/concentrations should be determined by the end user.

Application	Abreviews	Notes
WB		Use at an assay dependent concentration. Predicted molecular weight: 110 kDa.

Target

Function	Receptor for members of the ephrin-B family. Binds to ephrin-B1 and -B2.
Tissue specificity	Ubiquitous.
Sequence similarities	Belongs to the protein kinase superfamily. Tyr protein kinase family. Ephrin receptor subfamily. Contains 2 fibronectin type-III domains. Contains 1 protein kinase domain. Contains 1 SAM (sterile alpha motif) domain.
Cellular localization	Membrane.

Images



All lanes : Anti-Eph receptor B3 (phospho Y608) antibody (ab191502) at 1/500 dilution

Lane 1 : HeLa whole cell lysate

Lane 2 : NIH3T3 whole cell lysate

Lane 3 : PC12 whole cell lysate

Predicted band size: 110 kDa

Please note: All products are "FOR RESEARCH USE ONLY. NOT FOR USE IN DIAGNOSTIC PROCEDURES"

Our Abpromise to you: Quality guaranteed and expert technical support

- Replacement or refund for products not performing as stated on the datasheet
- Valid for 12 months from date of delivery
- Response to your inquiry within 24 hours
- We provide support in Chinese, English, French, German, Japanese and Spanish
- Extensive multi-media technical resources to help you
- We investigate all quality concerns to ensure our products perform to the highest standards

If the product does not perform as described on this datasheet, we will offer a refund or replacement. For full details of the Abpromise, please visit <https://www.abcam.com/abpromise> or contact our technical team.

Terms and conditions

- Guarantee only valid for products bought direct from Abcam or one of our authorized distributors