


Product datasheet

# Anti-Ephrin B2 (phospho Y311) + Ephrin B3 (phospho Y318) + Ephrin B1 (phospho Y324) antibody ab193634

2 Images

Overview

<b>Product name</b>	Anti-Ephrin B2 (phospho Y311) + Ephrin B3 (phospho Y318) + Ephrin B1 (phospho Y324) antibody
<b>Description</b>	Rabbit polyclonal to Ephrin B2 (phospho Y311) + Ephrin B3 (phospho Y318) + Ephrin B1 (phospho Y324)
<b>Host species</b>	Rabbit
<b>Specificity</b>	ab193634 detects endogenous levels of Ephrin B1/B2/B3 only when phosphorylated at tyrosine 324/311/318 respectively.
<b>Tested applications</b>	<b>Suitable for:</b> IHC-P, WB
<b>Species reactivity</b>	<b>Reacts with:</b> Human <b>Predicted to work with:</b> Mouse, Rat 
<b>Immunogen</b>	Synthetic peptide corresponding to Human Ephrin B1 aa 317-330 (phospho Y324) conjugated to keyhole limpet haemocyanin. Swiss-Prot: P98172/P52799/Q15768. Sequence: CEKVSGDYGHPVYI  <a href="#">Run BLAST with</a> <a href="#">Run BLAST with</a>
<b>Positive control</b>	Extracts from HepG2 cells treated with serum. Human brain tissue.

Properties

<b>Form</b>	Liquid
<b>Storage instructions</b>	Shipped at 4°C. Store at +4°C short term (1-2 weeks). Upon delivery aliquot. Store at -20°C long term. Avoid freeze / thaw cycle.
<b>Storage buffer</b>	pH: 7.40 Preservative: 0.02% Sodium azide Constituents: 50% Glycerol, 0.87% Sodium chloride, 49% PBS  PBS is without Mg <sup>2+</sup> and Ca <sup>2+</sup>
<b>Purity</b>	Immunogen affinity purified
<b>Purification notes</b>	ab193634 was purified by affinity-chromatography using an-epitope specific phosphopeptide. Non-phosphopeptide specific antibodies were removed by chromatography using non-

phosphopeptide.

**Clonality**

Polyclonal

**Isotype**

IgG

**Applications**

Our [Abpromise guarantee](#) covers the use of **ab193634** in the following tested applications.

The application notes include recommended starting dilutions; optimal dilutions/concentrations should be determined by the end user.

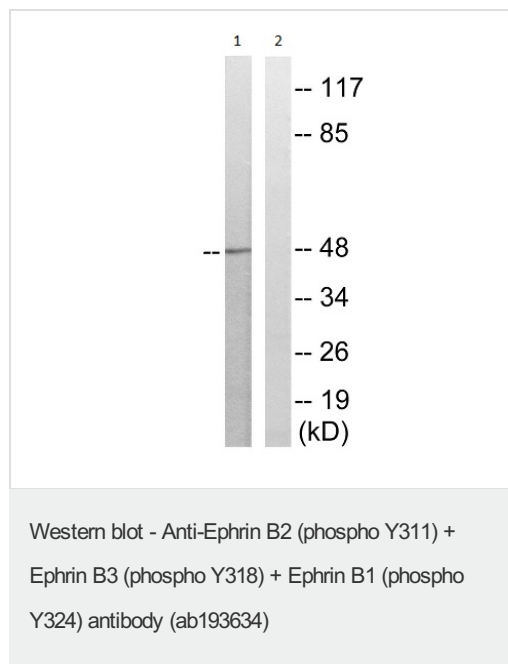
Application	Abreviews	Notes
IHC-P		1/50 - 1/100.
WB		1/500 - 1/1000. Predicted molecular weight: 47 kDa.

**Target**

**Cellular localization**

Ephrin B2: Membrane. Ephrin B3: Membrane. Ephrin B1: Membrane.

**Images**

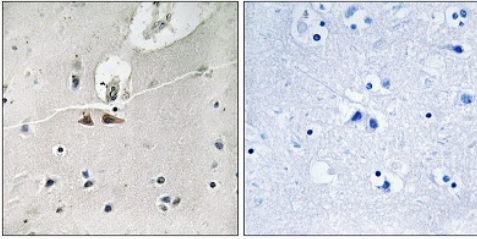


**All lanes :** Anti-Ephrin B2 (phospho Y311) + Ephrin B3 (phospho Y318) + Ephrin B1 (phospho Y324) antibody (ab193634) at 1/500 dilution

**Lane 1 :** Extracts from HepG2 cells treated with serum

**Lane 2 :** Extracts from HepG2 cells treated with serum with antigen-specific peptide

**Predicted band size:** 47 kDa



Immunohistochemical analysis of paraffin-embedded Human brain tissue sections labeling Ephrin B2 (phospho Y311) + Ephrin B3 (phospho Y318) + Ephrin B1 (phospho Y324) with ab193634 at a 1/50 dilution. Right image is treated with blocking peptide.

Immunohistochemistry (Formalin/PFA-fixed paraffin-embedded sections) - Anti-Ephrin B2 (phospho Y311) + Ephrin B3 (phospho Y318) + Ephrin B1 (phospho Y324) antibody (ab193634)

**Please note:** All products are "FOR RESEARCH USE ONLY. NOT FOR USE IN DIAGNOSTIC PROCEDURES"

### Our Abpromise to you: Quality guaranteed and expert technical support

---

- Replacement or refund for products not performing as stated on the datasheet
- Valid for 12 months from date of delivery
- Response to your inquiry within 24 hours
  
- We provide support in Chinese, English, French, German, Japanese and Spanish
- Extensive multi-media technical resources to help you
- We investigate all quality concerns to ensure our products perform to the highest standards

If the product does not perform as described on this datasheet, we will offer a refund or replacement. For full details of the Abpromise, please visit <https://www.abcam.com/abpromise> or contact our technical team.

### Terms and conditions

---

- Guarantee only valid for products bought direct from Abcam or one of our authorized distributors