

Product datasheet

Anti-ERAB antibody ab137455

1 References 5 Images

Overview

Product name	Anti-ERAB antibody
Description	Rabbit polyclonal to ERAB
Host species	Rabbit
Tested applications	Suitable for: WB, ICC/IF, IHC-P
Species reactivity	Reacts with: Mouse, Rat, Human
Immunogen	Synthetic peptide corresponding to a region within amino acids 201-211 of Human ERAB.
Positive control	HeLaS3, MOLT4, Neuro 2A, GL261 and PC12 whole cell lysates; A549 cells; OVCA xenograft tissue.

General notes

Reproducibility is key to advancing scientific discovery and accelerating scientists' next breakthrough.

Abcam is leading the way with our range of recombinant antibodies, knockout-validated antibodies and knockout cell lines, all of which support improved reproducibility.

We are also planning to innovate the way in which we present recommended applications and species on our product datasheets, so that only applications & species that have been tested in our own labs, our suppliers or by selected trusted collaborators are covered by our Abpromise™ guarantee.

In preparation for this, we have started to update the applications & species that this product is Abpromise guaranteed for.

We are also updating the applications & species that this product has been “predicted to work with,” however this information is not covered by our Abpromise guarantee.

Applications & species from publications and Abreviews that have not been tested in our own labs or in those of our suppliers are not covered by the Abpromise guarantee.

Please check that this product meets your needs before purchasing. If you have any questions, special requirements or concerns, please send us an inquiry and/or contact our Support team ahead of purchase. Recommended alternatives for this product can be found below, as well as customer reviews and Q&As.

Properties

Form	Liquid
-------------	--------

Storage instructions	Shipped at 4°C. Upon delivery aliquot. Store at -20°C or -80°C. Avoid freeze / thaw cycle.
Storage buffer	pH: 7.00 Preservative: 0.01% Thimerosal (merthiolate) Constituents: 79.99% PBS, 20% Glycerol (glycerin, glycerine)
Purity	Immunogen affinity purified
Clonality	Polyclonal
Isotype	IgG

Applications

Our [Abpromise guarantee](#) covers the use of **ab137455** in the following tested applications.

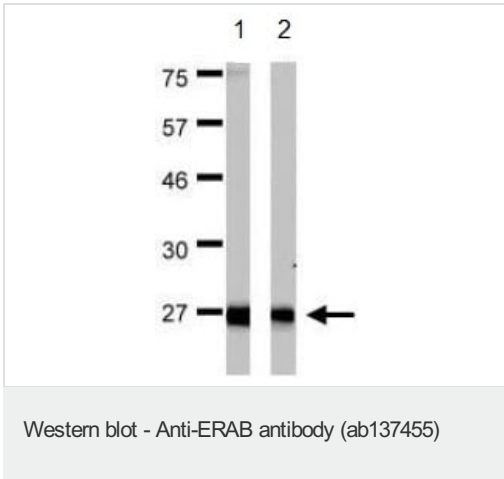
The application notes include recommended starting dilutions; optimal dilutions/concentrations should be determined by the end user.

Application	Abreviews	Notes
WB		1/1000 - 1/10000. Predicted molecular weight: 27 kDa.
ICC/IF		1/100 - 1/1000.
IHC-P		1/100 - 1/1000. Perform heat mediated antigen retrieval with citrate buffer pH 6 before commencing with IHC staining protocol.

Target

Function	Functions in mitochondrial tRNA maturation. Part of mitochondrial ribonuclease P, an enzyme composed of MRPP1/RG9MTD1, MRPP2/HSD17B10 and MRPP3/KIAA0391, which cleaves tRNA molecules in their 5'-ends. By interacting with intracellular amyloid-beta, it may contribute to the neuronal dysfunction associated with Alzheimer disease (AD).
Tissue specificity	Expressed in normal tissues but is overexpressed in neurons affected in AD.
Involvement in disease	Defects in HSD17B10 are the cause of 2-methyl-3-hydroxybutyryl-CoA dehydrogenase deficiency (MHBD deficiency) [MIM:300438]. MHBD deficiency leads to neurological abnormalities, including psychomotor retardation, and, in virtually all patients, loss of mental and motor skills. Defects in HSD17B10 are the cause of mental retardation syndromic X-linked type 10 (MRXS10) [MIM:300220]. MRXS10 is characterized by mild mental retardation, choreoathetosis and abnormal behavior. A chromosomal microduplication involving HSD17B10 and HUWE1 is the cause of mental retardation X-linked type 17 (MRX17) [MIM:300705]; also known as mental retardation X-linked type 31 (MRX31). Mental retardation is characterized by significantly sub-average general intellectual functioning associated with impairments in adaptive behavior and manifested during the developmental period. In contrast to syndromic or specific X-linked mental retardation which also present with associated physical, neurological and/or psychiatric manifestations, intellectual deficiency is the only primary symptom of non-syndromic X-linked mental retardation.
Sequence similarities	Belongs to the short-chain dehydrogenases/reductases (SDR) family.
Cellular localization	Mitochondrion.

Images



All lanes : Anti-ERAB antibody (ab137455) at 1/1000 dilution

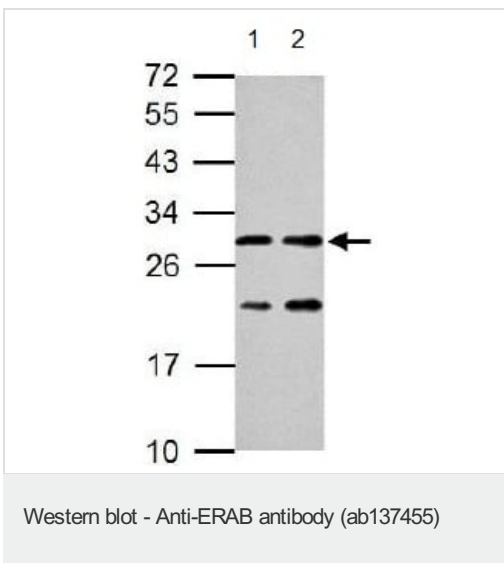
Lane 1 : HeLa S3 whole cell lysate

Lane 2 : MOLT4 whole cell lysate

Lysates/proteins at 30 µg per lane.

Predicted band size: 27 kDa

15% SDS PAGE



All lanes : Anti-ERAB antibody (ab137455) at 1/1000 dilution

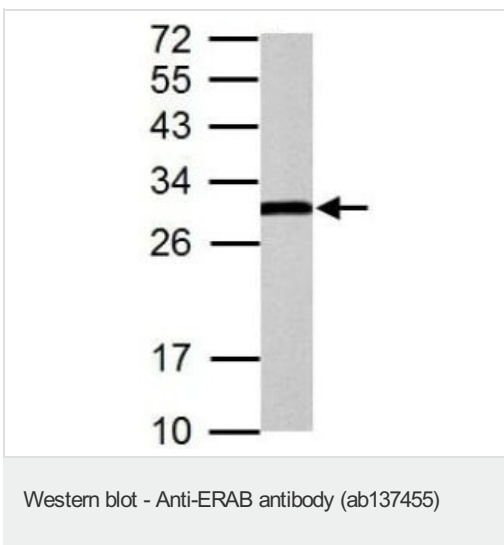
Lane 1 : Neuro 2A whole cell lysate

Lane 2 : GL261 whole cell lysate

Lysates/proteins at 30 µg per lane.

Predicted band size: 27 kDa

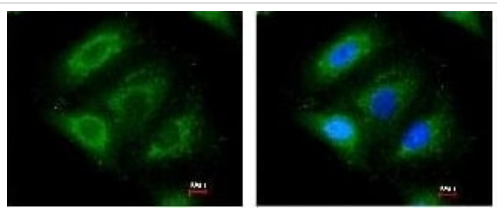
12% SDS PAGE



Anti-ERAB antibody (ab137455) at 1/5000 dilution + PC12 whole cell lysate at 30 µg

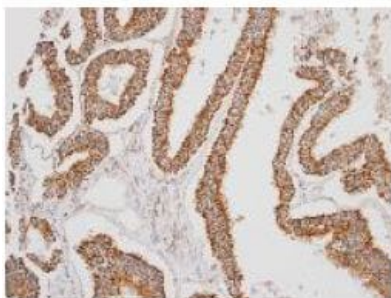
Predicted band size: 27 kDa

12% SDS PAGE



Immunocytochemistry/ Immunofluorescence - Anti-ERAB antibody (ab137455)

Immunofluorescence analysis of paraformaldehyde fixed A549 cells, labelling ERAB using ab137455 at 1/200 dilution. Right panel costained with Hoerchst 33342.



Immunohistochemistry (Formalin/PFA-fixed paraffin-embedded sections) - Anti-ERAB antibody (ab137455)

Immunohistochemical analysis of paraffin embedded OVCA xenograft tissue, labelling ERAB using ab137455 at 1/100 dilution.

Please note: All products are "FOR RESEARCH USE ONLY. NOT FOR USE IN DIAGNOSTIC PROCEDURES"

Our Abpromise to you: Quality guaranteed and expert technical support

- Replacement or refund for products not performing as stated on the datasheet
- Valid for 12 months from date of delivery
- Response to your inquiry within 24 hours
- We provide support in Chinese, English, French, German, Japanese and Spanish
- Extensive multi-media technical resources to help you
- We investigate all quality concerns to ensure our products perform to the highest standards

If the product does not perform as described on this datasheet, we will offer a refund or replacement. For full details of the Abpromise, please visit <https://www.abcam.com/abpromise> or contact our technical team.

Terms and conditions

- Guarantee only valid for products bought direct from Abcam or one of our authorized distributors