

Product datasheet

Anti-ERAP2 antibody ab69037

[3 References](#) [2 Images](#)

Overview

Product name	Anti-ERAP2 antibody
Description	Mouse polyclonal to ERAP2
Host species	Mouse
Tested applications	Suitable for: WB
Species reactivity	Reacts with: Human
Immunogen	Full length human ERAP2 protein (AAH17927, 350 a.a)
Positive control	Human kidney tissue lysate. ERAP2 transfected 293T cell lysate.

Properties

Form	Liquid
Storage instructions	Shipped at 4°C. Upon delivery aliquot and store at -20°C or -80°C. Avoid repeated freeze / thaw cycles.
Storage buffer	pH: 7.40 Constituent: PBS
Purity	Protein A purified
Clonality	Polyclonal
Isotype	IgG

Applications

Our [Abpromise guarantee](#) covers the use of **ab69037** in the following tested applications.

The application notes include recommended starting dilutions; optimal dilutions/concentrations should be determined by the end user.

Application	Abreviews	Notes
WB		

Application notes	WB: 1/500 - 1/1000. Detects bands of approximately 110 and 40 kDa (predicted molecular weight: 110 kDa; Isoform 4, 40 kDa).
--------------------------	---

Not yet tested in other applications.

Optimal dilutions/concentrations should be determined by the end user.

Target

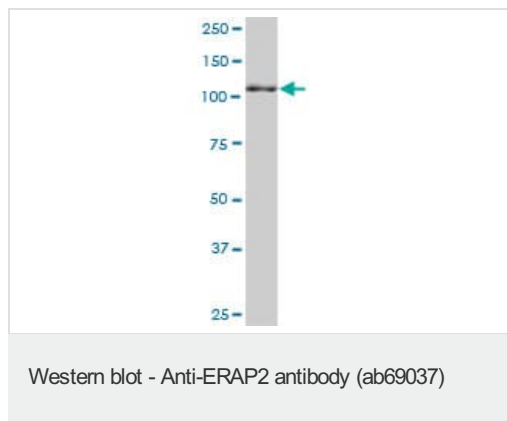
Relevance

ERAP2 is an aminopeptidase that plays a central role in peptide trimming. Major histocompatibility complex (MHC) class I molecules rely on aminopeptidases such as ERAP2 to trim precursors to antigenic peptides in the endoplasmic reticulum (ER) following cleavage in the cytoplasm by tripeptidyl peptidase II. ERAP2 preferentially hydrolyzes the basic residues Arg and Lys.

Cellular localization

Endoplasmic reticulum membrane; Single-pass type II membrane protein.

Images



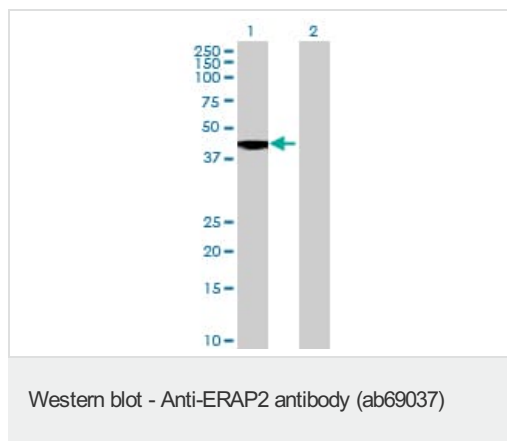
Anti-ERAP2 antibody (ab69037) at 1/500 dilution + Human kidney lysate at 50 μ g

Secondary

Goat Anti-Mouse IgG (H&L)-HRP Conjugate at 1/2500 dilution

Predicted band size: 110 kDa

Observed band size: 110 kDa



All lanes : Anti-ERAP2 antibody (ab69037) at 1/500 dilution

Lane 1 : ERAP2 transfected 293T cell lysate

Lane 2 : Non-transfected 293T cell lysate

Lysates/proteins at 25 μ g per lane.

Secondary

All lanes : Goat Anti-Mouse IgG (H&L)-HRP Conjugate at 1/2500 dilution

Predicted band size: 110 kDa

Observed band size: 40 kDa

[why is the actual band size different from the predicted?](#)

Please note: All products are "FOR RESEARCH USE ONLY. NOT FOR USE IN DIAGNOSTIC PROCEDURES"

Our Abpromise to you: Quality guaranteed and expert technical support

- Replacement or refund for products not performing as stated on the datasheet
- Valid for 12 months from date of delivery
- Response to your inquiry within 24 hours

- We provide support in Chinese, English, French, German, Japanese and Spanish
- Extensive multi-media technical resources to help you
- We investigate all quality concerns to ensure our products perform to the highest standards

If the product does not perform as described on this datasheet, we will offer a refund or replacement. For full details of the Abpromise, please visit <https://www.abcam.com/abpromise> or contact our technical team.

Terms and conditions

- Guarantee only valid for products bought direct from Abcam or one of our authorized distributors