




Product datasheet

Anti-ERCC1 antibody [1E5B3] ab204988

4 Images

Overview

Product name	Anti-ERCC1 antibody [1E5B3]
Description	Mouse monoclonal [1E5B3] to ERCC1
Host species	Mouse
Tested applications	Suitable for: Flow Cyt, WB, ICC/IF
Species reactivity	Reacts with: Human Predicted to work with: Mouse, Cow 
Immunogen	Recombinant fragment corresponding to Human ERCC1 aa 151-297. (Purified from E.coli). Sequence: DYIHGRLQSLGKNFALRVLLVQVDVKDPQQALKELAK MCILADCTLILAW SPEEAGRYLETYKAYEQKPADLLMEKLEQDFVSRVTE CLTTVKSVNKTDS QTLTTFGSLEQLIAASREDLALCPGLGPQKARRLFDV LHEPFLKVP Database link: P07992  Run BLAST with  Run BLAST with
Positive control	Human ERCC1 (aa151-297) recombinant protein; ERCC1 (aa151-297)-hlgGfC transfected HEK293 cell lysate; HeLa and A549 cells.

Properties

Form	Liquid
Storage instructions	Shipped at 4°C. Store at +4°C short term (1-2 weeks). Upon delivery aliquot. Store at -20°C long term. Avoid freeze / thaw cycle.
Storage buffer	Preservative: 0.05% Sodium azide Constituent: 99% PBS
Purity	Protein G purified
Purification notes	Purified from tissue culture supernatant.
Clonality	Monoclonal
Clone number	1E5B3

Isotype

IgG1

Applications

Our [Abpromise guarantee](#) covers the use of **ab204988** in the following tested applications.

The application notes include recommended starting dilutions; optimal dilutions/concentrations should be determined by the end user.

Application	Abreviews	Notes
Flow Cyt		1/200 - 1/400.
WB		1/500 - 1/2000. Predicted molecular weight: 33 kDa.
ICC/IF		1/200 - 1/1000.

Target

Function

Structure-specific DNA repair endonuclease responsible for the 5'-incision during DNA repair.

Involvement in disease

Defects in ERCC1 are the cause of cerebro-oculo-facio-skeletal syndrome type 4 (COFS4) [MIM:610758]. COFS is a degenerative autosomal recessive disorder of prenatal onset affecting the brain, eye and spinal cord. After birth, it leads to brain atrophy, hypoplasia of the corpus callosum, hypotonia, cataracts, microcornea, optic atrophy, progressive joint contractures and growth failure. Facial dysmorphism is a constant feature. Abnormalities of the skull, eyes, limbs, heart and kidney also occur.

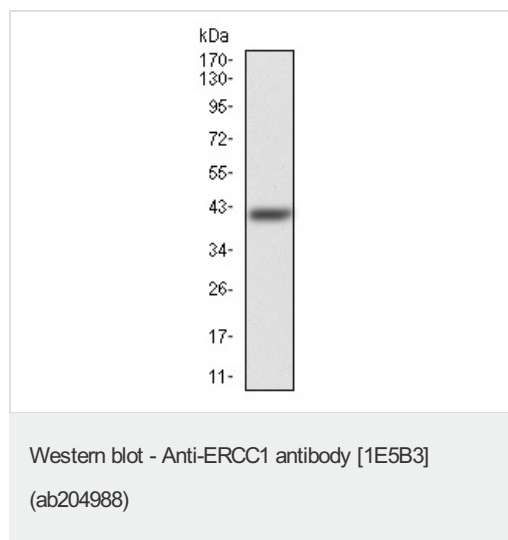
Sequence similarities

Belongs to the ERCC1/RAD10/SWI10 family.

Cellular localization

Nucleus.

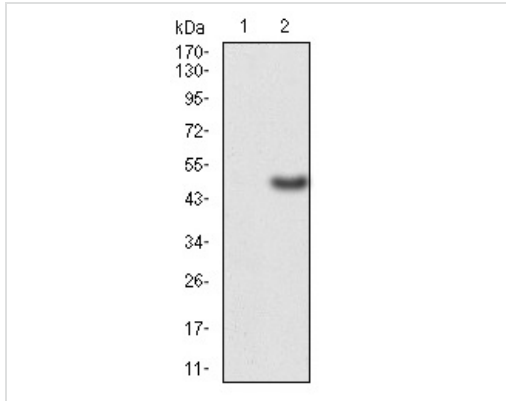
Images



Anti-ERCC1 antibody [1E5B3] (ab204988) at 1/500 dilution +
Human ERCC1 (aa151-297) recombinant protein

Predicted band size: 33 kDa

Expected MWt is 42.5 kDa.



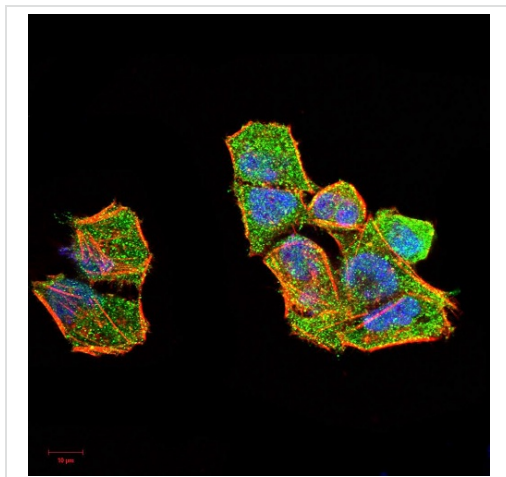
Western blot - Anti-ERCC1 antibody [1E5B3] (ab204988)

All lanes : Anti-ERCC1 antibody [1E5B3] (ab204988) at 1/500 dilution

Lane 1 : HEK293 cell lysate

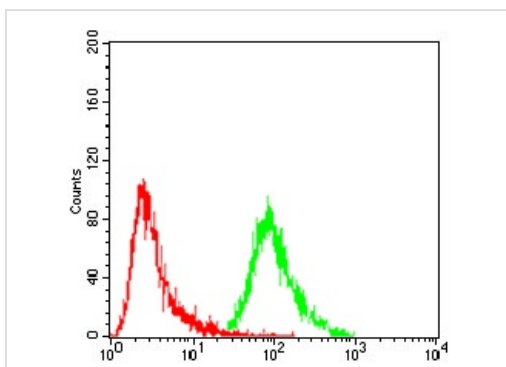
Lane 2 : ERCC1 (aa151-297)-hlgGfC transfected HEK293 cell lysate

Predicted band size: 33 kDa



Immunocytochemistry/ Immunofluorescence - Anti-ERCC1 antibody [1E5B3] (ab204988)

Immunofluorescent analysis of HeLa cells labeling ERCC1 with ab204988 at 1/200 dilution (green). Blue: DRAQ5 fluorescent DNA dye. Red: Actin filaments have been labeled with Alexa Fluor- 555 phalloidin.



Flow Cytometry - Anti-ERCC1 antibody [1E5B3] (ab204988)

Flow cytometric analysis of A549 cells labeling ERCC1 with ab204988 at 1/200 dilution (green), compared to a negative control (red).

Our Abpromise to you: Quality guaranteed and expert technical support

- Replacement or refund for products not performing as stated on the datasheet
- Valid for 12 months from date of delivery
- Response to your inquiry within 24 hours

- We provide support in Chinese, English, French, German, Japanese and Spanish
- Extensive multi-media technical resources to help you
- We investigate all quality concerns to ensure our products perform to the highest standards

If the product does not perform as described on this datasheet, we will offer a refund or replacement. For full details of the Abpromise, please visit <https://www.abcam.com/abpromise> or contact our technical team.

Terms and conditions

- Guarantee only valid for products bought direct from Abcam or one of our authorized distributors