

Product datasheet

Anti-ERCC1 antibody ab196869

[4 Images](#)

Overview

Product name	Anti-ERCC1 antibody
Description	Rabbit polyclonal to ERCC1
Host species	Rabbit
Specificity	This antibody detects endogenous level of total ERCC1 protein.
Tested applications	Suitable for: WB, ICC/IF, IHC-P
Species reactivity	Reacts with: Mouse, Human
Immunogen	Recombinant full length protein within Human ERCC1. The exact sequence is proprietary. Database link: P07992
Positive control	Raji, MCF7, PC3, HepG2, HeLa, Mouse liver and Mouse brain cell line extracts; Human kidney and Human kidney cancer tissues; U2OS cells.
General notes	<p>Reproducibility is key to advancing scientific discovery and accelerating scientists' next breakthrough.</p> <p>Abcam is leading the way with our range of recombinant antibodies, knockout-validated antibodies and knockout cell lines, all of which support improved reproducibility.</p> <p>We are also planning to innovate the way in which we present recommended applications and species on our product datasheets, so that only applications & species that have been tested in our own labs, our suppliers or by selected trusted collaborators are covered by our Abpromise™ guarantee.</p> <p>In preparation for this, we have started to update the applications & species that this product is Abpromise guaranteed for.</p> <p>We are also updating the applications & species that this product has been “predicted to work with,” however this information is not covered by our Abpromise guarantee.</p> <p>Applications & species from publications and Abreviews that have not been tested in our own labs or in those of our suppliers are not covered by the Abpromise guarantee.</p> <p>Please check that this product meets your needs before purchasing. If you have any questions, special requirements or concerns, please send us an inquiry and/or contact our Support team ahead of purchase. Recommended alternatives for this product can be found below, as well as customer reviews and Q&As.</p>

Properties

Form	Liquid
Storage instructions	Shipped at 4°C. Store at +4°C short term (1-2 weeks). Upon delivery aliquot. Store at -20°C long term. Avoid freeze / thaw cycle.
Storage buffer	pH: 7.40 Preservative: 0.02% Sodium azide Constituents: 49% PBS, 50% Glycerol (glycerin, glycerine), 0.87% Sodium chloride (without Mg ²⁺ and Ca ²⁺)
Purity	Immunogen affinity purified
Clonality	Polyclonal
Isotype	IgG

Applications

Our [Abpromise guarantee](#) covers the use of **ab196869** in the following tested applications.

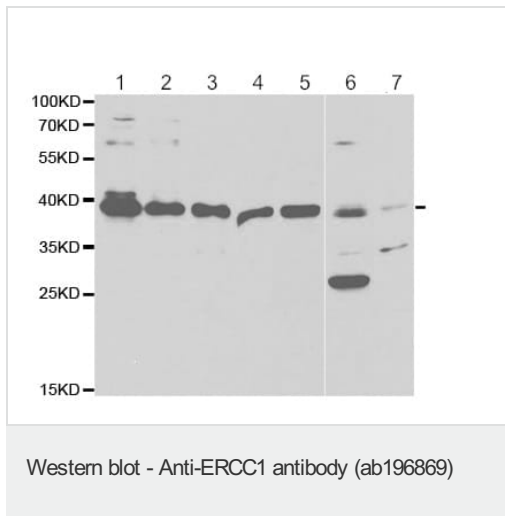
The application notes include recommended starting dilutions; optimal dilutions/concentrations should be determined by the end user.

Application	Abreviews	Notes
WB		1/500 - 1/2000. Predicted molecular weight: 33 kDa.
ICC/IF		1/50 - 1/200.
IHC-P		1/50 - 1/200.

Target

Function	Structure-specific DNA repair endonuclease responsible for the 5'-incision during DNA repair.
Involvement in disease	Defects in ERCC1 are the cause of cerebro-oculo-facio-skeletal syndrome type 4 (COFS4) [MIM:610758]. COFS is a degenerative autosomal recessive disorder of prenatal onset affecting the brain, eye and spinal cord. After birth, it leads to brain atrophy, hypoplasia of the corpus callosum, hypotonia, cataracts, microcornea, optic atrophy, progressive joint contractures and growth failure. Facial dysmorphism is a constant feature. Abnormalities of the skull, eyes, limbs, heart and kidney also occur.
Sequence similarities	Belongs to the ERCC1/RAD10/SWI10 family.
Cellular localization	Nucleus.

Images



All lanes : Anti-ERCC1 antibody (ab196869) at 1/500 dilution

Lane 1 : Raji cell line extract

Lane 2 : MCF7 cell line extract

Lane 3 : PC3 cell line extract

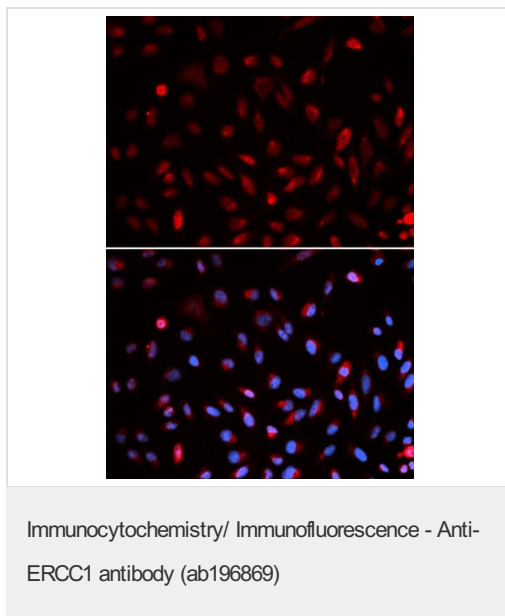
Lane 4 : HepG2 cell line extract

Lane 5 : HeLa cell line extract

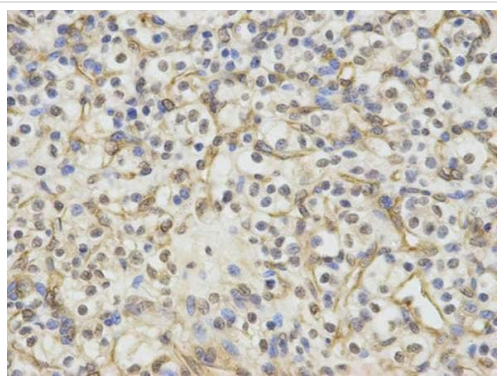
Lane 6 : Mouse liver tissue extract

Lane 7 : Mouse brain tissue extract

Predicted band size: 33 kDa

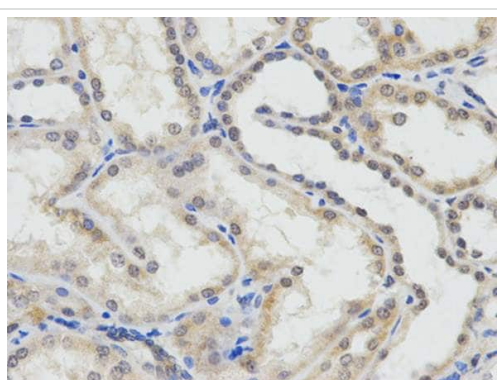


Immunofluorescent analysis of U2OS cells labeling ERCC1 with ab196869 at 1/50. Image at the bottom costained with DAPI.



Immunohistochemistry (Formalin/PFA-fixed paraffin-embedded sections) - Anti-ERCC1 antibody (ab196869)

Immunohistochemical analysis of paraffin-embedded Human kidney cancer tissue labeling ERCC1 with ab196869 at 1/50.



Immunohistochemistry (Formalin/PFA-fixed paraffin-embedded sections) - Anti-ERCC1 antibody (ab196869)

Immunohistochemical analysis of paraffin-embedded Human kidney tissue labeling ERCC1 with ab196869 at 1/50.

Please note: All products are "FOR RESEARCH USE ONLY. NOT FOR USE IN DIAGNOSTIC PROCEDURES"

Our Abpromise to you: Quality guaranteed and expert technical support

- Replacement or refund for products not performing as stated on the datasheet
- Valid for 12 months from date of delivery
- Response to your inquiry within 24 hours
- We provide support in Chinese, English, French, German, Japanese and Spanish
- Extensive multi-media technical resources to help you
- We investigate all quality concerns to ensure our products perform to the highest standards

If the product does not perform as described on this datasheet, we will offer a refund or replacement. For full details of the Abpromise, please visit <https://www.abcam.com/abpromise> or contact our technical team.

Terms and conditions

- Guarantee only valid for products bought direct from Abcam or one of our authorized distributors