


Product datasheet

Anti-eRF1 antibody ab153731

3 Images

Overview

Product name	Anti-eRF1 antibody
Description	Rabbit polyclonal to eRF1
Host species	Rabbit
Tested applications	Suitable for: WB, IHC-P, ICC/IF
Species reactivity	Reacts with: Human Predicted to work with: Mouse, Rat, Rabbit, Cow, Xenopus tropicalis 
Immunogen	Synthetic peptide within Human eRF1 aa 388-437 (C terminal). The exact sequence is proprietary.
Positive control	293T; A431; H1299; HeLa; HepG2; MOLT4 and Raji cell lysates; SW480 xenograft.

Properties

Form	Liquid
Storage instructions	Shipped at 4°C. Upon delivery aliquot. Store at -20°C or -80°C. Avoid freeze / thaw cycle.
Storage buffer	pH: 7.00 Preservative: 0.01% Thimerosal (merthiolate) Constituents: 1.21% Tris, 0.75% Glycine, 20% Glycerol
Purity	Immunogen affinity purified
Clonality	Polyclonal
Isotype	IgG

Applications

Our [Abpromise guarantee](#) covers the use of **ab153731** in the following tested applications.

The application notes include recommended starting dilutions; optimal dilutions/concentrations should be determined by the end user.

Application	Abreviews	Notes
WB		1/500 - 1/3000. Predicted molecular weight: 49 kDa.

Application	Abreviews	Notes
IHC-P		1/100 - 1/1000. Perform heat mediated antigen retrieval with citrate buffer pH 6 before commencing with IHC staining protocol. 10mM Citrate buffer
ICC/IF		1/100 - 1/1000.

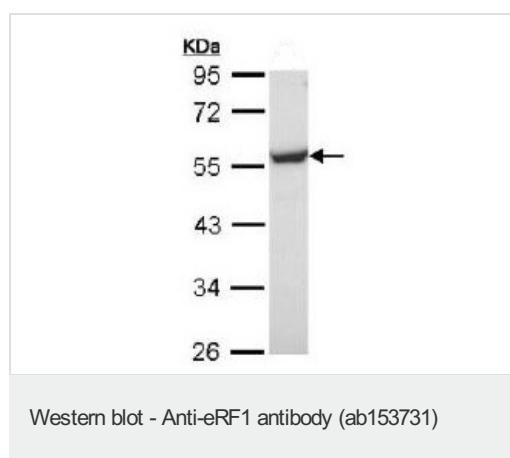
Target

Function Directs the termination of nascent peptide synthesis (translation) in response to the termination codons UAA, UAG and UGA. Component of the transient SURF complex which recruits UPF1 to stalled ribosomes in the context of nonsense-mediated decay (NMD) of mRNAs containing premature stop codons.

Sequence similarities Belongs to the eukaryotic release factor 1 family.

Cellular localization Cytoplasm.

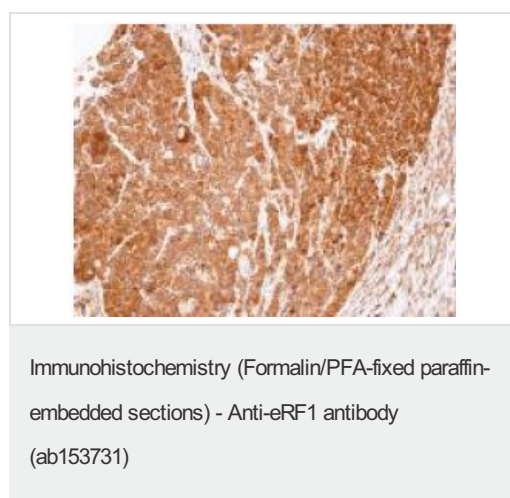
Images



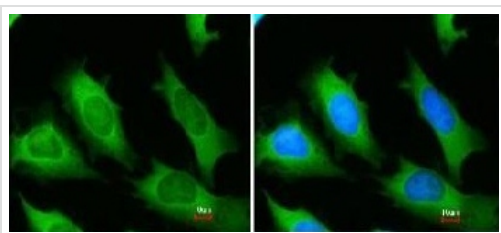
Anti-eRF1 antibody (ab153731) at 1/1000 dilution + MOLT4 whole cell lysate at 30 µg

Predicted band size: 49 kDa

10% SDS PAGE



Immunohistochemical analysis of paraffin embedded SW480 xenograft labeling eRF1 using ab153731 at 1/100 dilution.



Immunofluorescence analysis of paraformaldehyde fixed HeLa cells labeling eRF1 using ab153731 at 1/200 dilution.
The image in the right panel was merged with DNA probe.

Immunocytochemistry/ Immunofluorescence - Anti-eRF1 antibody (ab153731)

Please note: All products are "FOR RESEARCH USE ONLY. NOT FOR USE IN DIAGNOSTIC PROCEDURES"

Our Abpromise to you: Quality guaranteed and expert technical support

- Replacement or refund for products not performing as stated on the datasheet
- Valid for 12 months from date of delivery
- Response to your inquiry within 24 hours

- We provide support in Chinese, English, French, German, Japanese and Spanish
- Extensive multi-media technical resources to help you
- We investigate all quality concerns to ensure our products perform to the highest standards

If the product does not perform as described on this datasheet, we will offer a refund or replacement. For full details of the Abpromise, please visit <https://www.abcam.com/abpromise> or contact our technical team.

Terms and conditions

- Guarantee only valid for products bought direct from Abcam or one of our authorized distributors