


Product datasheet

Anti-ERO1LB antibody - C-terminal ab230540

3 Images

Overview

Product name	Anti-ERO1LB antibody - C-terminal
Description	Rabbit polyclonal to ERO1LB - C-terminal
Host species	Rabbit
Tested applications	Suitable for: WB, IHC-P, Flow Cyt
Species reactivity	Reacts with: Human Predicted to work with: Mouse 
Immunogen	Synthetic peptide within Human ERO1LB aa 266-293 (C terminal) conjugated to keyhole limpet haemocyanin. The exact sequence is proprietary. Database link: Q86YB8
Positive control	WB: MDA-MB-435 whole cell lysate. IHC-P: Human pancreas tissue. Flow Cytometry: MDA-MB-435 cells.
General notes	<p>Reproducibility is key to advancing scientific discovery and accelerating scientists' next breakthrough.</p> <p>Abcam is leading the way with our range of recombinant antibodies, knockout-validated antibodies and knockout cell lines, all of which support improved reproducibility.</p> <p>We are also planning to innovate the way in which we present recommended applications and species on our product datasheets, so that only applications & species that have been tested in our own labs, our suppliers or by selected trusted collaborators are covered by our Abpromise™ guarantee.</p> <p>In preparation for this, we have started to update the applications & species that this product is Abpromise guaranteed for.</p> <p>We are also updating the applications & species that this product has been “predicted to work with,” however this information is not covered by our Abpromise guarantee.</p> <p>Applications & species from publications and Abreviews that have not been tested in our own labs or in those of our suppliers are not covered by the Abpromise guarantee.</p> <p>Please check that this product meets your needs before purchasing. If you have any questions, special requirements or concerns, please send us an inquiry and/or contact our Support team ahead of purchase. Recommended alternatives for this product can be found below, as well as customer reviews and Q&As.</p>

Properties

Properties

Form	Liquid
Storage instructions	Shipped at 4°C. Store at +4°C short term (1-2 weeks). Upon delivery aliquot. Store at -20°C long term. Avoid freeze / thaw cycle.
Storage buffer	Preservative: 0.09% Sodium azide Constituent: PBS
Purity	Protein A purified
Clonality	Polyclonal
Isotype	IgG

Applications

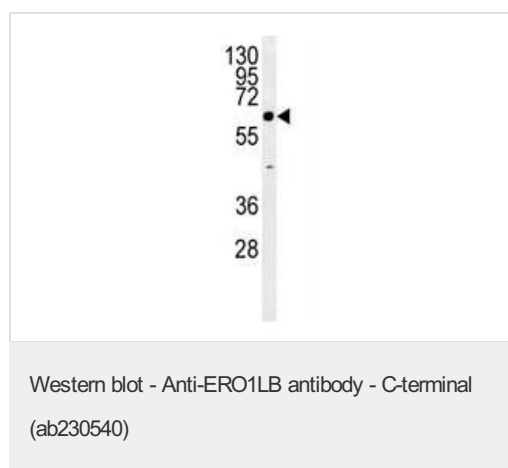
Our [Abpromise guarantee](#) covers the use of **ab230540** in the following tested applications.

The application notes include recommended starting dilutions; optimal dilutions/concentrations should be determined by the end user.

Application	Abreviews	Notes
WB		1/1000. Predicted molecular weight: 54 kDa.
IHC-P		1/50 - 1/100. Perform heat mediated antigen retrieval before commencing with IHC staining protocol.
Flow Cyt		1/10 - 1/50.

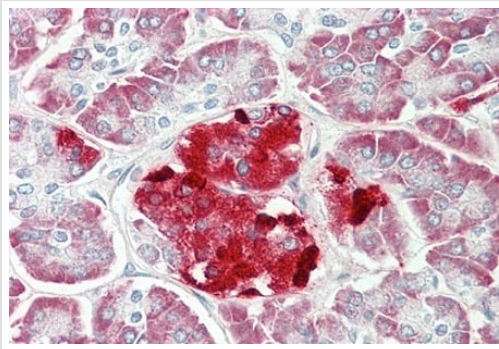
Target

Images



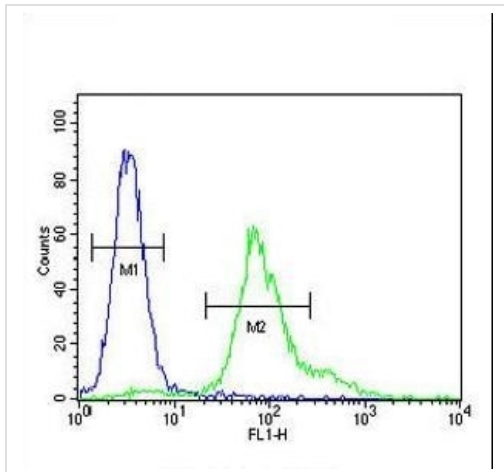
Anti-ERO1LB antibody - C-terminal (ab230540) at 1/1000 dilution + MDA-MB435 whole cell lysate at 35 µg

Predicted band size: 54 kDa



Formalin-fixed, paraffin-embedded human pancreas tissue stained for ERO1LB using ab230540 at 1/50 dilution in immunohistochemical analysis.

Immunohistochemistry (Formalin/PFA-fixed paraffin-embedded sections) - Anti-ERO1LB antibody - C-terminal (ab230540)



Flow cytometric analysis of MDA-MB-435 cell line labeling ERO1LB with ab230540 at 1/10 dilution (green) compared with a negative control (blue).

Flow Cytometry - Anti-ERO1LB antibody - C-terminal (ab230540)

Please note: All products are "FOR RESEARCH USE ONLY. NOT FOR USE IN DIAGNOSTIC PROCEDURES"

Our Abpromise to you: Quality guaranteed and expert technical support

- Replacement or refund for products not performing as stated on the datasheet
- Valid for 12 months from date of delivery
- Response to your inquiry within 24 hours
- We provide support in Chinese, English, French, German, Japanese and Spanish
- Extensive multi-media technical resources to help you
- We investigate all quality concerns to ensure our products perform to the highest standards

If the product does not perform as described on this datasheet, we will offer a refund or replacement. For full details of the Abpromise,

please visit <https://www.abcam.com/abpromise> or contact our technical team.

Terms and conditions

- Guarantee only valid for products bought direct from Abcam or one of our authorized distributors