

Product datasheet

Anti-ERp57 antibody [4F9] ab223363

2 Images

Overview

Product name	Anti-ERp57 antibody [4F9]
Description	Mouse monoclonal [4F9] to ERp57
Host species	Mouse
Tested applications	Suitable for: WB, ICC/IF
Species reactivity	Reacts with: Human
Immunogen	Recombinant full length protein corresponding to Human ERp57 aa 25-505. Full length mature His tagged chain. Database link: P30101
Positive control	WB: HeLa cell lysate. ICC/IF: HeLa cells.

Properties

Form	Liquid
Storage instructions	Shipped at 4°C. Store at +4°C short term (1-2 weeks). Upon delivery aliquot. Store at -20°C long term. Avoid freeze / thaw cycle.
Storage buffer	pH: 7.40 Preservative: 0.09% Sodium azide Constituents: 50% Glycerol, PBS
Purity	Protein G purified
Clonality	Monoclonal
Clone number	4F9
Isotype	IgG2b

Applications

Our [Abpromise guarantee](#) covers the use of **ab223363** in the following tested applications.

The application notes include recommended starting dilutions; optimal dilutions/concentrations should be determined by the end user.

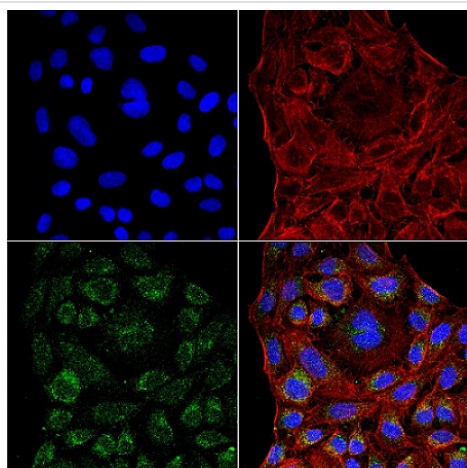
Application	Abreviews	Notes
WB		1/1000. Detects a band of approximately 57 kDa (predicted molecular weight: 56.8 kDa).

Application	Abreviews	Notes
ICC/IF		1/100.

Target

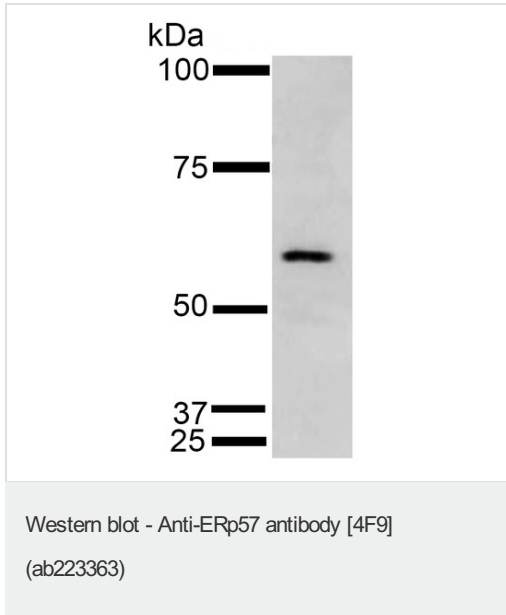
Tissue specificity	Detected in the flagellum and head region of spermatozoa (at protein level).
Sequence similarities	Belongs to the protein disulfide isomerase family. Contains 2 thioredoxin domains.
Cellular localization	Endoplasmic reticulum lumen. Melanosome. Identified by mass spectrometry in melanosome fractions from stage I to stage IV.

Images



4% Formaldehyde-fixed HeLa (human epithelial cell line from cervix adenocarcinoma) cells stained for ERp57 (green) using ab223363 at 1/200 dilution in ICC/IF. The nuclear counter stain is DAPI (blue). Actin is detected with Phalloidin Texas Red F-Actin stain (red) at 1/1000 dilution. The lower right panel shows the merged images.

Immunocytochemistry/ Immunofluorescence - Anti-ERp57 antibody [4F9] (ab223363)



Anti-ERp57 antibody [4F9] (ab223363) at 1/1000 dilution + HeLa (human epithelial cell line from cervix adenocarcinoma) cell lysate at 15 µg

Secondary

Goat Anti-Mouse IgG HRP at 1/1000 dilution

Developed using the ECL technique.

Predicted band size: 56.8 kDa

Observed band size: 57 kDa

[why is the actual band size different from the predicted?](#)

Exposure time: 5 minutes

Block: 5% skimmed milk in TBST.

Please note: All products are "FOR RESEARCH USE ONLY. NOT FOR USE IN DIAGNOSTIC PROCEDURES"

Our Abpromise to you: Quality guaranteed and expert technical support

- Replacement or refund for products not performing as stated on the datasheet
- Valid for 12 months from date of delivery
- Response to your inquiry within 24 hours

- We provide support in Chinese, English, French, German, Japanese and Spanish
- Extensive multi-media technical resources to help you
- We investigate all quality concerns to ensure our products perform to the highest standards

If the product does not perform as described on this datasheet, we will offer a refund or replacement. For full details of the Abpromise, please visit <https://www.abcam.com/abpromise> or contact our technical team.

Terms and conditions

- Guarantee only valid for products bought direct from Abcam or one of our authorized distributors