

Product datasheet

Anti-ERp72 antibody ab82587

★★★★★ 2 Abreviews 2 References 1 Image

Overview

Product name	Anti-ERp72 antibody
Description	Rabbit polyclonal to ERp72
Host species	Rabbit
Tested applications	Suitable for: WB
Species reactivity	Reacts with: Mouse, Rat, Rabbit, Guinea pig, Hamster, Cow, Dog, Human, Monkey
Immunogen	Synthetic peptide: FIDEHATKRSRTKEEL, corresponding to amino acids 623-638 of Mouse ERp72, conjugated to KLH and with an added cysteine residue Run BLAST with ExPASy Run BLAST with NCBI
Positive control	Liver microsomal extracts.

Properties

Form	Liquid
Storage instructions	Shipped at 4°C. Upon delivery aliquot and store at -20°C. Avoid freeze / thaw cycles.
Storage buffer	Preservative: 0.09% Sodium azide Constituents: 50% Glycerol, PBS
Purity	Protein A purified
Clonality	Polyclonal
Isotype	IgG

Applications

Our [Abpromise guarantee](#) covers the use of **ab82587** in the following tested applications.

The application notes include recommended starting dilutions; optimal dilutions/concentrations should be determined by the end user.

Application	Abreviews	Notes
WB	★★★★★	1/1000. Detects a band of approximately 73 kDa (predicted molecular weight: 73 kDa).

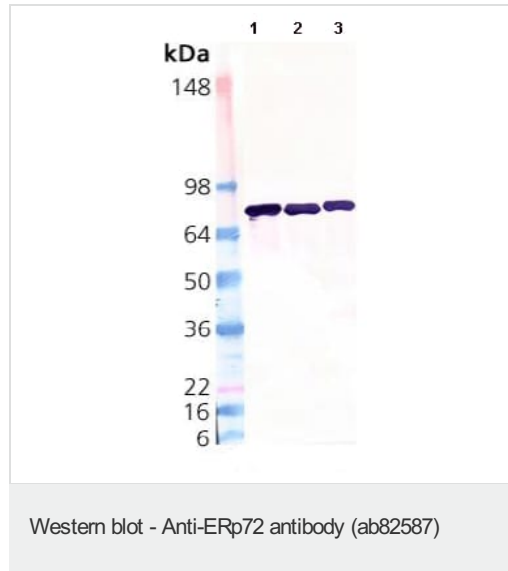
Target

Sequence similarities

Belongs to the protein disulfide isomerase family.
Contains 3 thioredoxin domains.

Cellular localization

Endoplasmic reticulum lumen. Melanosome. Identified by mass spectrometry in melanosome fractions from stage I to stage IV.

Images

All lanes : Anti-ERp72 antibody (ab82587) at 1/1000 dilution

Lane 1 : Rat liver microsomes extract

Lane 2 : Mouse liver microsomes extract

Lane 3 : Human liver microsomes extract

Predicted band size: 73 kDa

Observed band size: 73 kDa

Please note: All products are "FOR RESEARCH USE ONLY. NOT FOR USE IN DIAGNOSTIC PROCEDURES"

Our Abpromise to you: Quality guaranteed and expert technical support

- Replacement or refund for products not performing as stated on the datasheet
- Valid for 12 months from date of delivery
- Response to your inquiry within 24 hours

- We provide support in Chinese, English, French, German, Japanese and Spanish
- Extensive multi-media technical resources to help you
- We investigate all quality concerns to ensure our products perform to the highest standards

If the product does not perform as described on this datasheet, we will offer a refund or replacement. For full details of the Abpromise, please visit <https://www.abcam.com/abpromise> or contact our technical team.

Terms and conditions

- Guarantee only valid for products bought direct from Abcam or one of our authorized distributors