

Product datasheet

Anti-ESD antibody [EPR8446] ab131211

Recombinant RabMAb

[2 Images](#)

Overview

Product name	Anti-ESD antibody [EPR8446]
Description	Rabbit monoclonal [EPR8446] to ESD
Host species	Rabbit
Tested applications	Suitable for: WB, Flow Cyt Unsuitable for: ICC, IHC-P or IP
Species reactivity	Reacts with: Human
Immunogen	Synthetic peptide from a region of Human ESD (P10768)
Positive control	K562, HeLa, Jurkat, Caco-2 cell lysates; Jurkat cells
General notes	Mouse, Rat: We have preliminary internal testing data to indicate this antibody may not react with these species. Please contact us for more information.

This product is a recombinant monoclonal antibody, which offers several advantages including:

- High batch-to-batch consistency and reproducibility
- Improved sensitivity and specificity
- Long-term security of supply
- Animal-free production

For more information [see here](#).

Our RabMAb[®] technology is a patented hybridoma-based technology for making rabbit monoclonal antibodies. For details on our patents, please refer to [RabMAb[®] patents](#).

Properties

Form	Liquid
Storage instructions	Shipped at 4°C. Store at -20°C. Stable for 12 months at -20°C.
Storage buffer	pH: 7.20 Preservative: 0.01% Sodium azide Constituents: 9% PBS, 40% Glycerol, 0.05% BSA, 50% Tissue culture supernatant
Purity	Tissue culture supernatant
Clonality	Monoclonal

Clone number EPR8446

Isotype IgG

Applications

Our [Abpromise guarantee](#) covers the use of **ab131211** in the following tested applications.

The application notes include recommended starting dilutions; optimal dilutions/concentrations should be determined by the end user.

Application	Abreviews	Notes
WB		1/1000 - 1/10000. Predicted molecular weight: 31 kDa.
Flow Cyt		1/10 - 1/100. ab172730 - Rabbit monoclonal IgG, is suitable for use as an isotype control with this antibody.

Application notes Is unsuitable for ICC,IHC-P or IP.

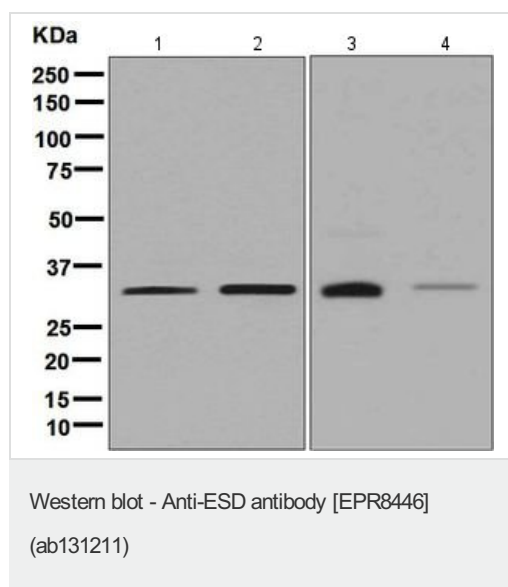
Target

Function Serine hydrolase involved in the detoxification of formaldehyde.

Sequence similarities Belongs to the esterase D family.

Cellular localization Cytoplasm. Cytoplasmic vesicle.

Images



All lanes : Anti-ESD antibody [EPR8446] (ab131211) at 1/1000 dilution

Lane 1 : K562 cell lysate

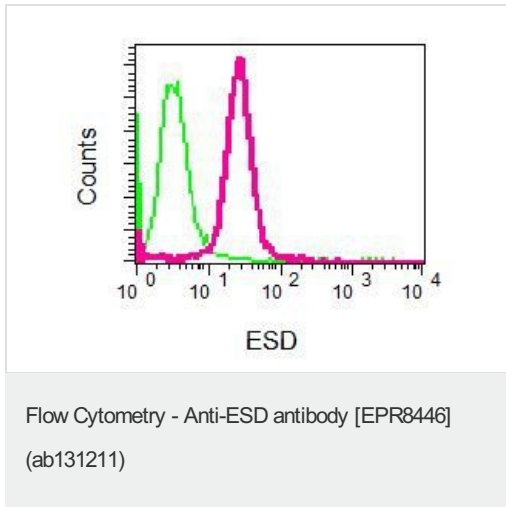
Lane 2 : Jurkat cell lysate

Lane 3 : Caco-2 cell lysate

Lane 4 : HeLa cell lysate

Lysates/proteins at 10 µg per lane.

Predicted band size: 31 kDa



ab131211 at 1/10 labelling ESD in permeabilized Jurkat cells by flow cytometry. Rabbit IgG negative control is in green.

Please note: All products are "FOR RESEARCH USE ONLY. NOT FOR USE IN DIAGNOSTIC PROCEDURES"

Our Abpromise to you: Quality guaranteed and expert technical support

- Replacement or refund for products not performing as stated on the datasheet
- Valid for 12 months from date of delivery
- Response to your inquiry within 24 hours
- We provide support in Chinese, English, French, German, Japanese and Spanish
- Extensive multi-media technical resources to help you
- We investigate all quality concerns to ensure our products perform to the highest standards

If the product does not perform as described on this datasheet, we will offer a refund or replacement. For full details of the Abpromise, please visit <https://www.abcam.com/abpromise> or contact our technical team.

Terms and conditions

- Guarantee only valid for products bought direct from Abcam or one of our authorized distributors