

Product datasheet

Anti-Estrogen Inducible Protein pS2 antibody ab231713

4 Images

Overview

Product name	Anti-Estrogen Inducible Protein pS2 antibody
Description	Rabbit polyclonal to Estrogen Inducible Protein pS2
Host species	Rabbit
Tested applications	Suitable for: WB, IHC-P
Species reactivity	Reacts with: Rat
Immunogen	Recombinant full length protein corresponding to Rat Estrogen Inducible Protein pS2 aa 1-81. (Expressed in E.coli) Sequence: MEHKVTCVLAMVLMMLALSSLAQNQEETCAVIPRERINC GFPGVTAQQCKE KGCCFDDSVRGFPWCFRPLVIENQQEEECPF

Database link: [Q63467](#)

 [Run BLAST with](#)

 [Run BLAST with](#)

Positive control	IHC-P: Rat stomach tissue. WB: Recombinant rat Estrogen Inducible Protein pS2 protein; Rat stomach lysate.
-------------------------	--

Properties

Form	Liquid
Storage instructions	Shipped at 4°C. Store at +4°C short term (1-2 weeks). Upon delivery aliquot. Store at -20°C long term. Avoid freeze / thaw cycle.
Storage buffer	pH: 7.40 Constituents: PBS, 50% Glycerol
Purity	Immunogen affinity purified
Purification notes	Antigen-specific affinity chromatography followed by Protein A affinity chromatography.
Clonality	Polyclonal
Isotype	IgG

Applications

Our [Abpromise guarantee](#) covers the use of **ab231713** in the following tested applications.

The application notes include recommended starting dilutions; optimal dilutions/concentrations should be determined by the end user.

Application	Abreviews	Notes
WB		Use a concentration of 0.5 - 2 µg/ml. Predicted molecular weight: 9 kDa.
IHC-P		Use a concentration of 5 - 20 µg/ml.

Target

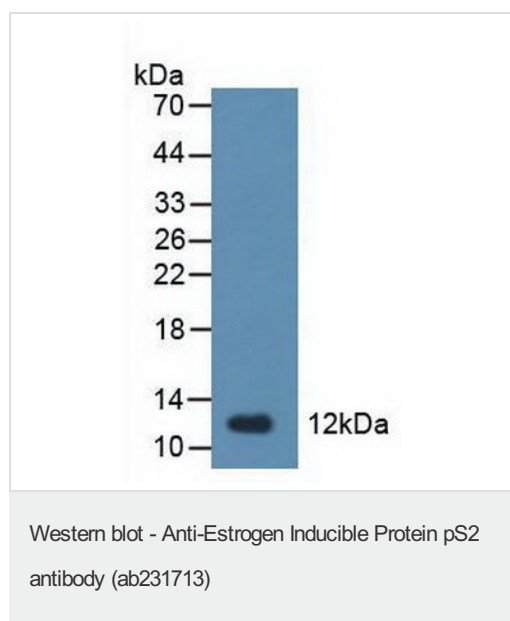
Function Stabilizer of the mucous gel overlying the gastrointestinal mucosa that provides a physical barrier against various noxious agents. May inhibit the growth of calcium oxalate crystals in urine.

Tissue specificity Found in stomach, with highest levels in the upper gastric mucosal cells (at protein level). Detected in goblet cells of the small and large intestine and rectum, small submucosal glands in the esophagus, mucous acini of the sublingual gland, submucosal glands of the trachea, and epithelial cells lining the exocrine pancreatic ducts but not in the remainder of the pancreas (at protein level). Scattered expression is detected in the epithelial cells of the gallbladder and submucosal glands of the vagina, and weak expression is observed in the bronchial goblet cells of the pseudostratified epithelia in the respiratory system (at protein level). Detected in urine (at protein level). Strongly expressed in breast cancer but at low levels in normal mammary tissue. It is regulated by estrogen in MCF-7 cells. Strong expression found in normal gastric mucosa and in the regenerative tissues surrounding ulcerous lesions of gastrointestinal tract, but lower expression found in gastric cancer (at protein level).

Sequence similarities Contains 1 P-type (trefoil) domain.

Cellular localization Secreted.

Images

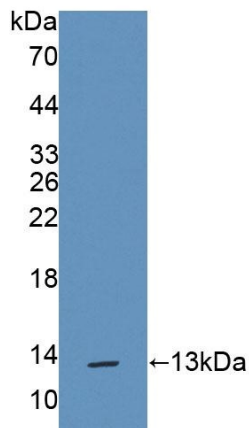


Anti-Estrogen Inducible Protein pS2 antibody (ab231713) at 2 µg/ml + Rat stomach tissue.

Secondary

HRP-Linked Guinea pig anti-Rabbit at 1/2000 dilution

Predicted band size: 9 kDa



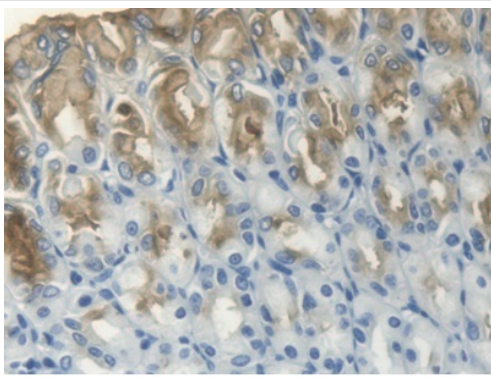
Western blot - Anti-Estrogen Inducible Protein pS2 antibody (ab231713)

Anti-Estrogen Inducible Protein pS2 antibody (ab231713) at 2 $\mu\text{g/ml}$ + Recombinant rat Estrogen Inducible Protein pS2 protein.

Secondary

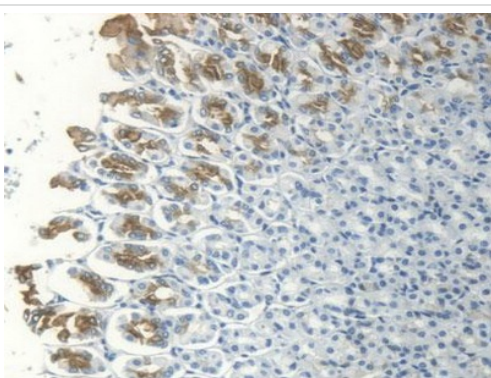
HRP-Linked Guinea pig anti-Rabbit at 1/2000 dilution

Predicted band size: 9 kDa



Immunohistochemistry (Formalin/PFA-fixed paraffin-embedded sections) - Anti-Estrogen Inducible Protein pS2 antibody (ab231713)

Formalin-fixed, paraffin-embedded rat stomach tissue stained for Estrogen Inducible Protein pS2 using ab231713 at 20 $\mu\text{g/ml}$ in immunohistochemical analysis.



Immunohistochemistry (Formalin/PFA-fixed paraffin-embedded sections) - Anti-Estrogen Inducible Protein pS2 antibody (ab231713)

Formalin-fixed, paraffin-embedded rat stomach tissue stained for Estrogen Inducible Protein pS2 using ab231713 at 20 $\mu\text{g/ml}$ in immunohistochemical analysis.

Please note: All products are "FOR RESEARCH USE ONLY. NOT FOR USE IN DIAGNOSTIC PROCEDURES"

Our Abpromise to you: Quality guaranteed and expert technical support

- Replacement or refund for products not performing as stated on the datasheet
- Valid for 12 months from date of delivery
- Response to your inquiry within 24 hours

- We provide support in Chinese, English, French, German, Japanese and Spanish
- Extensive multi-media technical resources to help you
- We investigate all quality concerns to ensure our products perform to the highest standards

If the product does not perform as described on this datasheet, we will offer a refund or replacement. For full details of the Abpromise, please visit <https://www.abcam.com/abpromise> or contact our technical team.

Terms and conditions

- Guarantee only valid for products bought direct from Abcam or one of our authorized distributors