

## Product datasheet

# Anti-Estrogen Receptor beta antibody [14C8] - BSA and Azide free ab288

★★★★★ 9 Abreviews 88 References 2 Images

### Overview

<b>Product name</b>	Anti-Estrogen Receptor beta antibody [14C8] - BSA and Azide free
<b>Description</b>	Mouse monoclonal [14C8] to Estrogen Receptor beta - BSA and Azide free
<b>Host species</b>	Mouse
<b>Tested applications</b>	<b>Suitable for:</b> WB
<b>Species reactivity</b>	<b>Reacts with:</b> Human
<b>Immunogen</b>	Recombinant fragment corresponding to Human Estrogen Receptor beta aa 1-153. Expressed in E.coli. Database link: <a href="#">Q92731</a>
<b>Positive control</b>	WB: Recombinant fusion protein, human liver and intestine, HEK-293T cells.
<b>General notes</b>	<p>This product was changed from ascites to tissue culture supernatant on 23<sup>rd</sup> October 2018. Please note that the dilutions may need to be adjusted accordingly. If you have any questions, please do not hesitate to contact our scientific support team.</p> <p>The Life Science industry has been in the grips of a reproducibility crisis for a number of years. Abcam is leading the way in addressing this with our range of recombinant monoclonal antibodies and knockout edited cell lines for gold-standard validation. Please check that this product meets your needs before purchasing.</p> <p>If you have any questions, special requirements or concerns, please send us an inquiry and/or contact our Support team ahead of purchase. Recommended alternatives for this product can be found below, along with publications, customer reviews and Q&amp;As</p>

### Properties

<b>Form</b>	Liquid
<b>Storage instructions</b>	Shipped at 4°C. Store at +4°C short term (1-2 weeks). Upon delivery aliquot. Store at -20°C or -80°C. Avoid freeze / thaw cycle.
<b>Storage buffer</b>	pH: 7.40 Constituent: 100% PBS
<b>Carrier free</b>	Yes
<b>Purity</b>	Immunogen affinity purified

<b>Purification notes</b>	Purified from TCS
<b>Clonality</b>	Monoclonal
<b>Clone number</b>	14C8
<b>Myeloma</b>	NS1
<b>Isotype</b>	IgG2b
<b>Light chain type</b>	kappa

## Applications

**The Abpromise guarantee** Our [Abpromise guarantee](#) covers the use of ab288 in the following tested applications.

The application notes include recommended starting dilutions; optimal dilutions/concentrations should be determined by the end user.

Application	Abreviews	Notes
<b>WB</b>	★★★★★ (2)	Use a concentration of 1 - 5 µg/ml. Predicted molecular weight: 59 kDa. Blocking condition: 5% non-fat milk in TBST, RT, 60min. Primary antibody incubation: 4°C overnight.

## Target

**Function** Nuclear hormone receptor. Binds estrogens with an affinity similar to that of ESR1, and activates expression of reporter genes containing estrogen response elements (ERE) in an estrogen-dependent manner. Isoform beta-cx lacks ligand binding ability and has no or only very low ere binding activity resulting in the loss of ligand-dependent transactivation ability. DNA-binding by ESR1 and ESR2 is rapidly lost at 37 degrees Celsius in the absence of ligand while in the presence of 17 beta-estradiol and 4-hydroxy-tamoxifen loss in DNA-binding at elevated temperature is more gradual.

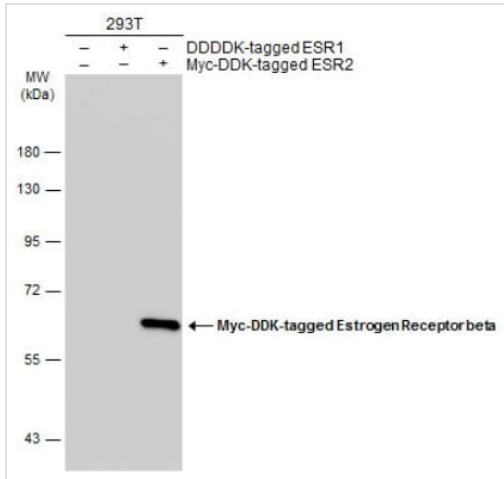
**Tissue specificity** Isoform beta-1 is expressed in testis and ovary, and at a lower level in heart, brain, placenta, liver, skeletal muscle, spleen, thymus, prostate, colon, bone marrow, mammary gland and uterus. Also found in uterine bone, breast, and ovarian tumor cell lines, but not in colon and liver tumors. Isoform beta-2 is expressed in spleen, thymus, testis and ovary and at a lower level in skeletal muscle, prostate, colon, small intestine, leukocytes, bone marrow, mammary gland and uterus. Isoform beta-3 is found in testis. Isoform beta-4 is expressed in testis, and at a lower level in spleen, thymus, ovary, mammary gland and uterus. Isoform beta-5 is expressed in testis, placenta, skeletal muscle, spleen and leukocytes, and at a lower level in heart, lung, liver, kidney, pancreas, thymus, prostate, colon, small intestine, bone marrow, mammary gland and uterus. Not expressed in brain.

**Sequence similarities** Belongs to the nuclear hormone receptor family. NR3 subfamily. Contains 1 nuclear receptor DNA-binding domain.

**Domain** Composed of three domains: a modulating N-terminal domain, a DNA-binding domain and a C-terminal ligand-binding domain.

**Cellular localization** Nucleus.

## Images



Western blot - Anti-Estrogen Receptor beta antibody [14C8] - BSA and Azide free (ab288)

**All lanes** : Anti-Estrogen Receptor beta antibody [14C8] - BSA and Azide free (ab288) at 1/5000 dilution

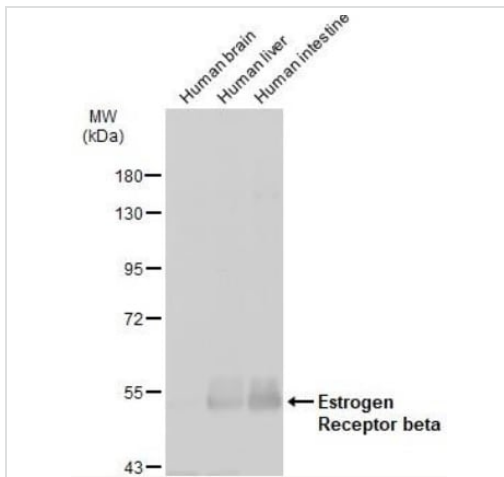
**Lane 1** : Non-transfected HEK-293T whole cell extracts

**Lane 2** : Transfected HEK-293T whole cell extracts

Lysates/proteins at 30 µg per lane.

**Predicted band size:** 59 kDa

7.5% SDS-PAGE



Western blot - Anti-Estrogen Receptor beta antibody [14C8] - BSA and Azide free (ab288)

**All lanes** : Anti-Estrogen Receptor beta antibody [14C8] - BSA and Azide free (ab288) at 1/500 dilution

**Lane 1** : Human brain tissue lysate

**Lane 2** : Human liver tissue lysate

**Lane 3** : Human intestine tissue lysate

Lysates/proteins at 30 µg per lane.

**Secondary**

**All lanes** : Mouse IgG antibody (HRP) at 1/5000 dilution

Developed using the ECL technique.

**Predicted band size:** 59 kDa

7.5% gel.

Running condition: 80V, 15min; 140V, 40min.

Transfer condition: Semi-dry, 18 V, 60min (NC membrane)

blocking condition: 5% non-fat milk in TBST, RT, 60min.

primary antibody incubation: 4°C overnight.

Secondary antibody incubation: room temperature for 1 hour.

Washing conditions: 5 ml TBST, 4 x 5min.

ECL exposure.

**Please note:** All products are "FOR RESEARCH USE ONLY. NOT FOR USE IN DIAGNOSTIC PROCEDURES"

### **Our Abpromise to you: Quality guaranteed and expert technical support**

---

- Replacement or refund for products not performing as stated on the datasheet
- Valid for 12 months from date of delivery
- Response to your inquiry within 24 hours
  
- We provide support in Chinese, English, French, German, Japanese and Spanish
- Extensive multi-media technical resources to help you
- We investigate all quality concerns to ensure our products perform to the highest standards

If the product does not perform as described on this datasheet, we will offer a refund or replacement. For full details of the Abpromise, please visit <https://www.abcam.com/abpromise> or contact our technical team.

### **Terms and conditions**

---

- Guarantee only valid for products bought direct from Abcam or one of our authorized distributors