




Product datasheet

Anti-ETV6 / Tel antibody ab223705

6 Images

Overview

Product name	Anti-ETV6 / Tel antibody
Description	Rabbit polyclonal to ETV6 / Tel
Host species	Rabbit
Tested applications	Suitable for: WB, IHC-P, ICC/IF
Species reactivity	Reacts with: Human Predicted to work with: Cow 
Immunogen	Recombinant fragment corresponding to Human ETV6/ Tel aa 90-210. Sequence: NGKALLLLTKEDFRYRSPHSGDVL YELLQHILKQRKPRI LFSPFFHPGNS IHTQPEVILHQNH EEDNCVQRTPRPSVDNVHHNPPTIE LLHRSRSPITTN HRPSPDPEQRPLRSPLDNMIR Database link: P41212  Run BLAST with  Run BLAST with
Positive control	WB: U-2 OS and CACO-2 cell lysate. IHC-P: Human breast and skin tissue. ICC/IF: U-2 OS cells.

Properties

Form	Liquid
Storage instructions	Shipped at 4°C. Store at +4°C short term (1-2 weeks). Upon delivery aliquot. Store at -20°C long term. Avoid freeze / thaw cycle.
Storage buffer	pH: 7.20 Preservative: 0.02% Sodium azide Constituents: 40% Glycerol, PBS
Purity	Immunogen affinity purified
Clonality	Polyclonal
Isotype	IgG

Applications

Our [Abpromise guarantee](#) covers the use of **ab223705** in the following tested applications.

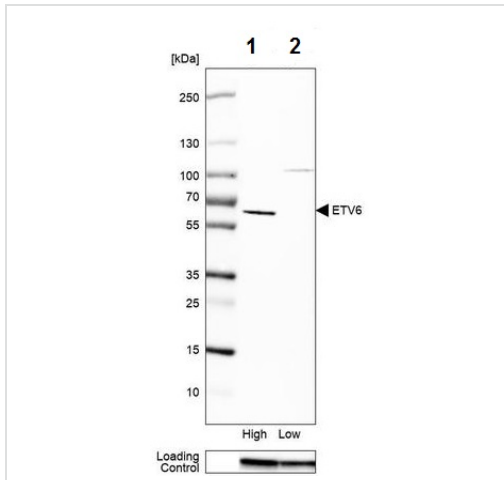
The application notes include recommended starting dilutions; optimal dilutions/concentrations should be determined by the end user.

Application	Abreviews	Notes
WB		1/100 - 1/250. Predicted molecular weight: 53 kDa.
IHC-P		1/200 - 1/500. Perform heat mediated antigen retrieval with citrate buffer pH 6 before commencing with IHC staining protocol.
ICC/IF		Use a concentration of 1 - 4 µg/ml. Fixation/permeabilization: PFA/Triton X-100.

Target

Function	Transcriptional repressor; binds to the DNA sequence 5'-CCGGAAGT-3'.
Tissue specificity	Ubiquitous.
Involvement in disease	<p>Note=A chromosomal aberration involving ETV6 is found in a form of chronic myelomonocytic leukemia (CMML). Translocation t(5;12)(q33;p13) with PDGFRB. It is characterized by abnormal clonal myeloid proliferation and by progression to acute myelogenous leukemia (AML).</p> <p>Note=Chromosomal aberrations involving ETV6 are found in a form of acute myeloid leukemia (AML). Translocation t(12;22)(p13;q11) with MN1; translocation t(4;12)(q12;p13) with CHIC2.</p> <p>Note=Chromosomal aberrations involving ETV6 are found in childhood acute lymphoblastic leukemia (ALL). Translocations t(12;21)(p12;q22) and t(12;21)(p13;q22) with RUNX1/AML1.</p> <p>Note=A chromosomal aberration involving ETV6 is found in a form of pre-B acute myeloid leukemia. Translocation t(9;12)(p24;p13) with JAK2.</p> <p>Note=A chromosomal aberration involving ETV6 is found in myelodysplastic syndrome (MDS) with basophilia. Translocation t(5;12)(q31;p13) with ACSL6.</p> <p>Note=A chromosomal aberration involving ETV6 is found in acute eosinophilic leukemia (AEL). Translocation t(5;12)(q31;p13) with ACSL6.</p> <p>Note=A chromosomal aberration involving ETV6 is found in myelodysplastic syndrome (MDS). Translocation t(1;12)(p36.1;p13) with MDS2.</p> <p>Defects in ETV6 are a cause of myeloproliferative disorder chronic with eosinophilia (MPE) [MIM:131440]. A hematologic disorder characterized by malignant eosinophils proliferation.</p> <p>Note=A chromosomal aberration involving ETV6 is found in many instances of myeloproliferative disorder chronic with eosinophilia. Translocation t(5;12) with PDGFRB on chromosome 5 creating an ETV6-PDGFRB fusion protein.</p> <p>Defects in ETV6 are a cause of acute myelogenous leukemia (AML) [MIM:601626]. AML is a malignant disease in which hematopoietic precursors are arrested in an early stage of development.</p> <p>Note=A chromosomal aberration involving ETV6 is found in acute lymphoblastic leukemia. Translocation t(9;12)(p13;p13) with PAX5.</p>
Sequence similarities	<p>Belongs to the ETS family.</p> <p>Contains 1 ETS DNA-binding domain.</p> <p>Contains 1 PNT (pointed) domain.</p>
Post-translational modifications	Phosphorylation of Ser-257 by MAPK14 (p38) inhibits ETV6 transcriptional repression.
Cellular localization	Nucleus.

Images



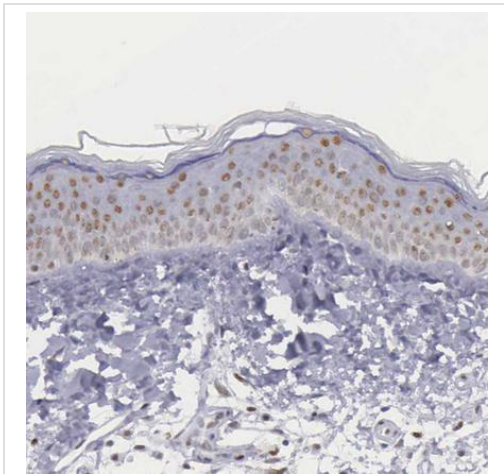
Western blot - Anti-ETV6 / Tel antibody (ab223705)

All lanes : Anti-ETV6 / Tel antibody (ab223705) at 0.4 $\mu\text{g/ml}$

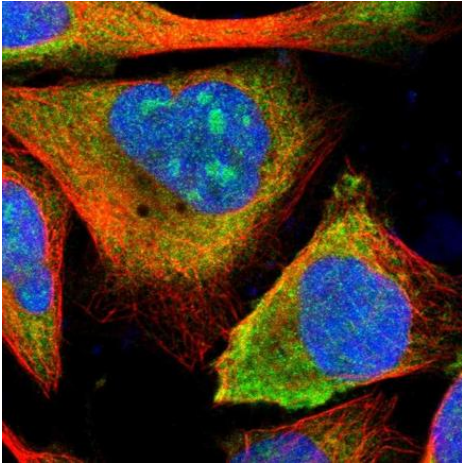
Lane 1 : U-2-OS cell lysate

Lane 2 : CACO-2 cell lysate

Predicted band size: 53 kDa

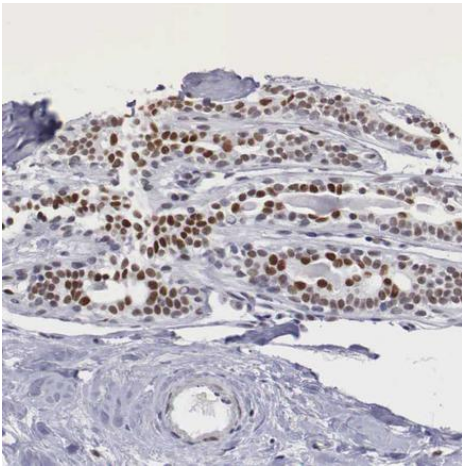


Immunohistochemistry (Formalin/PFA-fixed paraffin-embedded sections) - Anti-ETV6 / Tel antibody (ab223705)



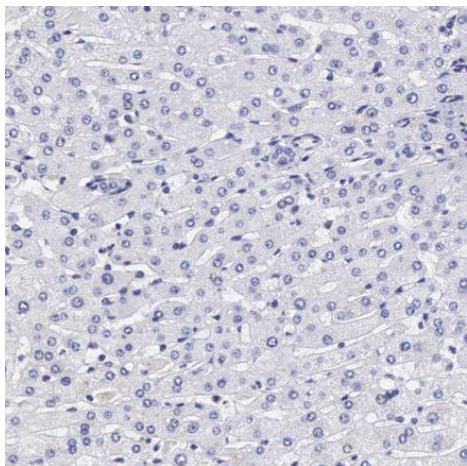
Immunocytochemistry/ Immunofluorescence - Anti-ETV6 / Tel antibody (ab223705)

PFA-fixed, Triton X-100 permeabilized U-2 OS (human bone osteosarcoma epithelial cell line) cells stained for ETV6 / Tel (green) using ab223705 at 4 $\mu\text{g/ml}$ in ICC/IF.



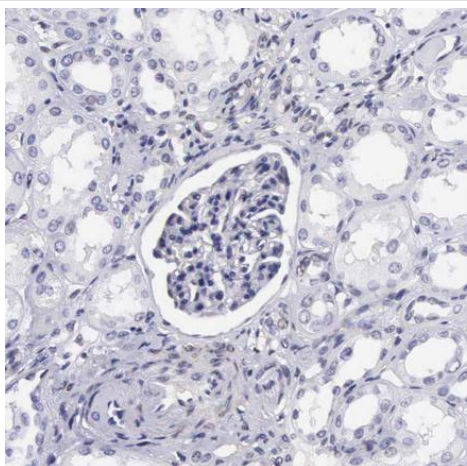
Immunohistochemistry (Formalin/PFA-fixed paraffin-embedded sections) - Anti-ETV6 / Tel antibody (ab223705)

Immunohistochemical analysis of human breast tissue labeling ETV6 / Tel with ab223705 at 1/200 dilution.



Immunohistochemical analysis of human liver tissue labeling ETV6 / Tel with ab223705 at 1/200 dilution. No staining is observed.

Immunohistochemistry (Formalin/PFA-fixed paraffin-embedded sections) - Anti-ETV6 / Tel antibody (ab223705)



Immunohistochemical analysis of human kidney tissue labeling ETV6 / Tel with ab223705 at 1/200 dilution. No staining is observed.

Immunohistochemistry (Formalin/PFA-fixed paraffin-embedded sections) - Anti-ETV6 / Tel antibody (ab223705)

Please note: All products are "FOR RESEARCH USE ONLY. NOT FOR USE IN DIAGNOSTIC PROCEDURES"

Our Abpromise to you: Quality guaranteed and expert technical support

- Replacement or refund for products not performing as stated on the datasheet
- Valid for 12 months from date of delivery
- Response to your inquiry within 24 hours
- We provide support in Chinese, English, French, German, Japanese and Spanish
- Extensive multi-media technical resources to help you
- We investigate all quality concerns to ensure our products perform to the highest standards

If the product does not perform as described on this datasheet, we will offer a refund or replacement. For full details of the Abpromise,

please visit <https://www.abcam.com/abpromise> or contact our technical team.

Terms and conditions

- Guarantee only valid for products bought direct from Abcam or one of our authorized distributors