




Product datasheet

Anti-Exfoliative Toxin A/ETA antibody ab225679

1 Image

Overview

Product name	Anti-Exfoliative Toxin A/ETA antibody
Description	Rabbit polyclonal to Exfoliative Toxin A/ETA
Host species	Rabbit
Tested applications	Suitable for: WB
Species reactivity	Reacts with: Recombinant fragment Predicted to work with: Staphylococcus aureus 
Immunogen	Recombinant full length protein corresponding to Staphylococcus aureus Exfoliative Toxin A/ETA aa 39-280. Sequence: EVSAEEIKKHEEKWNKYGVNAFNLPKELFSKVDEKDRQ KYPYNTIGNVF VKGQTSATGVLIGKNTVLNTRHIAKFANGDPSKVSFRPSIN TDDNGTET PYGEYEVKEILQEPFGAGVDLALIRLKPQNGVSLGDKISP AKIGTSNDL KDGDKLELIGYPFDHKVNQMHRSEIELTTLRGLRYYGFTV PGNSGSGIF NSNGELVGIHSSKVSHLDREHQINYGVGIGNYVKRIINEKNE Database link: P09331 <div style="display: flex; justify-content: space-around;">  Run BLAST with  Run BLAST with </div>
Positive control	WB: Recombinant Staphylococcus aureus Exfoliative toxin A/ETA protein.
General notes	This product was previously labelled as Exfoliative Toxin A

Reproducibility is key to advancing scientific discovery and accelerating scientists' next breakthrough.

Abcam is leading the way with our range of recombinant antibodies, knockout-validated antibodies and knockout cell lines, all of which support improved reproducibility.

We are also planning to innovate the way in which we present recommended applications and species on our product datasheets, so that only applications & species that have been tested in our own labs, our suppliers or by selected trusted collaborators are covered by our Abpromise™ guarantee.

In preparation for this, we have started to update the applications & species that this product is Abpromise guaranteed for.

We are also updating the applications & species that this product has been “predicted to work with,” however this information is not covered by our Abpromise guarantee.

Applications & species from publications and Abreviews that have not been tested in our own labs or in those of our suppliers are not covered by the Abpromise guarantee.

Please check that this product meets your needs before purchasing. If you have any questions, special requirements or concerns, please send us an inquiry and/or contact our Support team ahead of purchase. Recommended alternatives for this product can be found below, as well as customer reviews and Q&As.

Properties

Form	Liquid
Storage instructions	Shipped at 4°C. Store at +4°C short term (1-2 weeks). Upon delivery aliquot. Store at -20°C long term. Avoid freeze / thaw cycle.
Storage buffer	pH: 7.40 Constituents: 50% Glycerol (glycerin, glycerine), PBS, 0.03% Proclin 300
Purity	Protein G purified
Purification notes	Purity >95%.
Clonality	Polyclonal
Isotype	IgG

Applications

Our [Abpromise guarantee](#) covers the use of **ab225679** in the following tested applications.

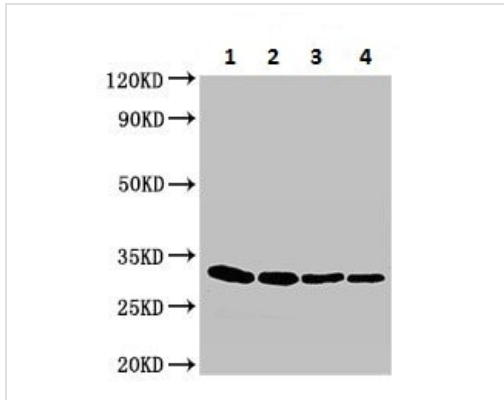
The application notes include recommended starting dilutions; optimal dilutions/concentrations should be determined by the end user.

Application	Abreviews	Notes
WB		1/500 - 1/5000. Detects a band of approximately 32 kDa (predicted molecular weight: 31 kDa).

Target

Relevance	Staphylococcus aureus Exfoliative Toxin A (ETA) has serine protease-like properties and binds to the skin protein profilaggrin. It cleaves substrates after acidic residues. Exfoliative toxins cause impetigous diseases commonly referred as staphylococcal scalded skin syndrome (SSSS).
------------------	---

Images



Western blot - Anti-Exfoliative Toxin A/ETA antibody (ab225679)

All lanes : Anti-Exfoliative Toxin A/ETA antibody (ab225679) at 1/500 dilution

Lane 1 : Recombinant Staphylococcus aureus Exfoliative toxin A/ETA protein at 0.2 µg

Lane 2 : Recombinant Staphylococcus aureus Exfoliative toxin A/ETA protein at 0.1 µg

Lane 3 : Recombinant Staphylococcus aureus Exfoliative toxin A/ETA protein at 0.05 µg

Lane 4 : Recombinant Staphylococcus aureus Exfoliative toxin A/ETA protein at 0.025 µg

Secondary

All lanes : Goat polyclonal to rabbit IgG at 1/50000 dilution

Predicted band size: 31 kDa

Observed band size: 32 kDa

[why is the actual band size different from the predicted?](#)

Please note: All products are "FOR RESEARCH USE ONLY. NOT FOR USE IN DIAGNOSTIC PROCEDURES"

Our Abpromise to you: Quality guaranteed and expert technical support

- Replacement or refund for products not performing as stated on the datasheet
- Valid for 12 months from date of delivery
- Response to your inquiry within 24 hours
- We provide support in Chinese, English, French, German, Japanese and Spanish
- Extensive multi-media technical resources to help you
- We investigate all quality concerns to ensure our products perform to the highest standards

If the product does not perform as described on this datasheet, we will offer a refund or replacement. For full details of the Abpromise, please visit <https://www.abcam.com/abpromise> or contact our technical team.

Terms and conditions

- Guarantee only valid for products bought direct from Abcam or one of our authorized distributors