

Product datasheet

Anti-EXOC2 antibody [EPR9420] ab140620

Recombinant RabMAb

[2 Images](#)

Overview

Product name	Anti-EXOC2 antibody [EPR9420]
Description	Rabbit monoclonal [EPR9420] to EXOC2
Host species	Rabbit
Tested applications	Suitable for: WB, Flow Cyt Unsuitable for: ICC, IHC-P or IP
Species reactivity	Reacts with: Mouse, Rat, Human
Immunogen	Synthetic peptide within Human EXOC2 (N terminal). The exact sequence is proprietary.
Positive control	BxPC-3, Human placenta, Fetal brain and SH-SY5Y cell lysates; BxPC-3 cells.
General notes	Our RabMAb [®] technology is a patented hybridoma-based technology for making rabbit monoclonal antibodies. For details on our patents, please refer to RabMAb[®] patents . This product is a recombinant rabbit monoclonal antibody .

Properties

Form	Liquid
Storage instructions	Shipped at 4°C. Store at -20°C.
Storage buffer	Preservative: 0.01% Sodium azide Constituents: 9% PBS, 40% Glycerol, 0.05% BSA, 50% Tissue culture supernatant
Purity	Tissue culture supernatant
Clonality	Monoclonal
Clone number	EPR9420
Isotype	IgG

Applications

Our [Abpromise guarantee](#) covers the use of **ab140620** in the following tested applications.

The application notes include recommended starting dilutions; optimal dilutions/concentrations should be determined by the end user.

Application	Abreviews	Notes
WB		1/1000 - 1/10000. Predicted molecular weight: 104 kDa.
Flow Cyt		1/10 - 1/100. ab172730 - Rabbit monoclonal IgG, is suitable for use as an isotype control with this antibody.

Application notes Is unsuitable for ICC, IHC-P or IP.

Target

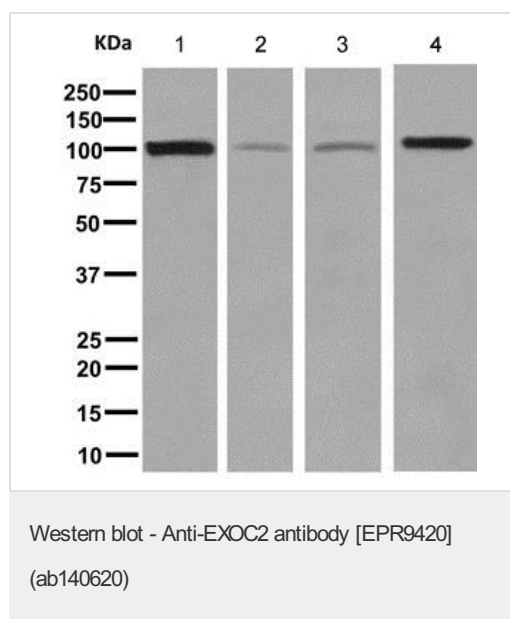
Function Component of the exocyst complex involved in the docking of exocytic vesicles with fusion sites on the plasma membrane.

Tissue specificity Widely expressed with highest levels in brain and placenta.

Sequence similarities Belongs to the SEC5 family.
Contains 1 IPT/TIG domain.

Domain Interacts with RALA through the TIG domain.

Images



All lanes : Anti-EXOC2 antibody [EPR9420] (ab140620) at 1/1000 dilution

Lane 1 : BxPC-3 cell lysate

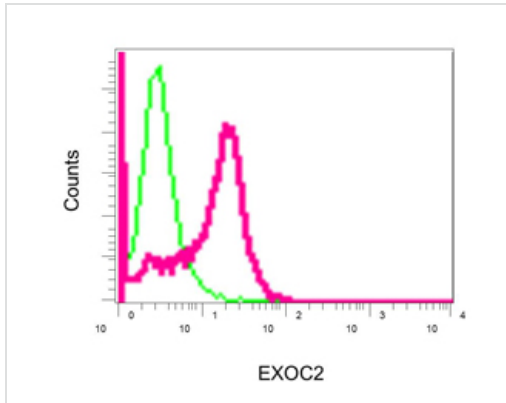
Lane 2 : Human placenta tissue lysate

Lane 3 : Fetal brain tissue lysate

Lane 4 : SH-SY5Y cell lysate

Lysates/proteins at 10 µg per lane.

Predicted band size: 104 kDa



Flow cytometric analysis of permeabilized BxPC-3 cells labelling EXOC2 with ab140620 at 1/10 dilution (red) or a Rabbit IgG negative control (green).

Flow Cytometry - Anti-EXOC2 antibody [EPR9420]
(ab140620)

Please note: All products are "FOR RESEARCH USE ONLY. NOT FOR USE IN DIAGNOSTIC PROCEDURES"

Our Abpromise to you: Quality guaranteed and expert technical support

- Replacement or refund for products not performing as stated on the datasheet
- Valid for 12 months from date of delivery
- Response to your inquiry within 24 hours
- We provide support in Chinese, English, French, German, Japanese and Spanish
- Extensive multi-media technical resources to help you
- We investigate all quality concerns to ensure our products perform to the highest standards

If the product does not perform as described on this datasheet, we will offer a refund or replacement. For full details of the Abpromise, please visit <https://www.abcam.com/abpromise> or contact our technical team.

Terms and conditions

- Guarantee only valid for products bought direct from Abcam or one of our authorized distributors