


Product datasheet

Anti-EXOC7 antibody ab118792

2 Images

Overview

Product name	Anti-EXOC7 antibody
Description	Rabbit polyclonal to EXOC7
Host species	Rabbit
Tested applications	Suitable for: WB, IP
Species reactivity	Reacts with: Mouse, Human Predicted to work with: Rat, Rabbit, Horse, Guinea pig, Cow, Dog, Pig, Rhesus monkey, Orangutan, Elephant 
Immunogen	Synthetic peptide corresponding to a region within amino acids 1-50 of Human EXOC7 (NP_001138769.1).
Positive control	HeLa, 293T, Jurkat and NIH3T3 whole cell lysates.

Properties

Form	Liquid
Storage instructions	Shipped at 4°C. Upon delivery aliquot and store at -20°C. Avoid freeze / thaw cycles.
Storage buffer	Preservative: 0.09% Sodium azide Constituent: 99% Tris citrate/phosphate pH 7 to 8
Purity	Immunogen affinity purified
Clonality	Polyclonal
Isotype	IgG

Applications

Our [Abpromise guarantee](#) covers the use of **ab118792** in the following tested applications.

The application notes include recommended starting dilutions; optimal dilutions/concentrations should be determined by the end user.

Application	Abreviews	Notes
WB		1/2000 - 1/10000. Predicted molecular weight: 83 kDa.

Application	Abreviews	Notes
IP		Use at 2-10 µg/mg of lysate.

Target

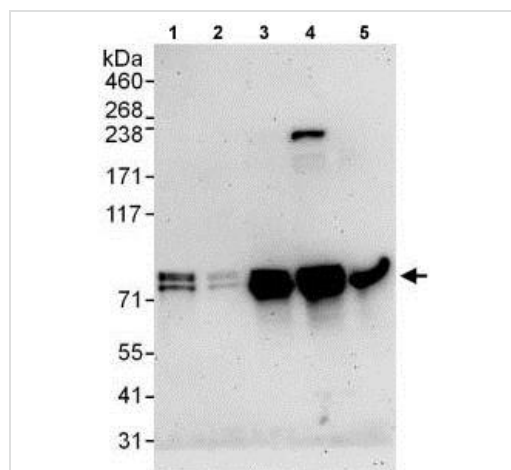
Function Component of the exocyst complex involved in the docking of exocytic vesicles with fusion sites on the plasma membrane. In adipocytes, plays a crucial role in targeting SLC2A4 vesicle to the plasma membrane in response to insulin, perhaps directing the vesicle to the precise site of fusion.

Sequence similarities Belongs to the EXO70 family.

Domain The N-terminus is involved in SEC8 and ARHQ binding.
The C-terminus is required for translocation to the plasma membrane.

Cellular localization Cytoplasm > cytosol. Cell membrane. Translocates, as a preformed complex with SEC6 and SEC8, to the plasma membrane in response to insulin through the activation of ARHQ.

Images



Western blot - Anti-EXOC7 antibody (ab118792)

All lanes : Anti-EXOC7 antibody (ab118792) at 0.1 µg/ml

Lane 1 : HeLa whole cell lysate at 50 µg

Lane 2 : HeLa whole cell lysate at 15 µg

Lane 3 : 293T whole cell lysate at 50 µg

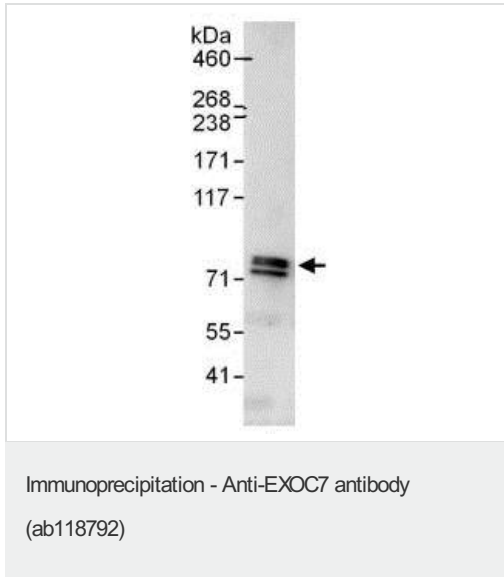
Lane 4 : Jurkat whole cell lysate at 50 µg

Lane 5 : NIH3T3 whole cell lysate at 50 µg

Developed using the ECL technique.

Predicted band size: 83 kDa

Exposure time: 3 minutes



Detection of EXOC7 in Immunoprecipitates of HeLa whole cell lysates (1 mg for IP, 20% of IP loaded) using ab118792 at 6 µg/mg lysate for IP and at 1 µg/ml for subsequent Western blot detection. Detection: Chemiluminescence with an exposure time of 30 seconds.

Please note: All products are "FOR RESEARCH USE ONLY. NOT FOR USE IN DIAGNOSTIC PROCEDURES"

Our Abpromise to you: Quality guaranteed and expert technical support

- Replacement or refund for products not performing as stated on the datasheet
- Valid for 12 months from date of delivery
- Response to your inquiry within 24 hours
- We provide support in Chinese, English, French, German, Japanese and Spanish
- Extensive multi-media technical resources to help you
- We investigate all quality concerns to ensure our products perform to the highest standards

If the product does not perform as described on this datasheet, we will offer a refund or replacement. For full details of the Abpromise, please visit <https://www.abcam.com/abpromise> or contact our technical team.

Terms and conditions

- Guarantee only valid for products bought direct from Abcam or one of our authorized distributors