




Product datasheet

Anti-EXTL3 antibody ab237484

3 Images

Overview

Product name	Anti-EXTL3 antibody
Description	Rabbit polyclonal to EXTL3
Host species	Rabbit
Tested applications	Suitable for: WB, IHC-P, ICC/IF
Species reactivity	Reacts with: Human Predicted to work with: Mouse 
Immunogen	Recombinant fragment corresponding to Human EXTL3 aa 2-245. Sequence: TGYTMLRNGGAGNGGQTCMLRWSNRIRLTWLSFTLFVI LVFFPLIAHYL TTLDEADEAGKRIFGPRVGNELCEVKHVLDLCRIRESV SEELLQLEAKRQ ELNSEIAKLNKIEACKKSIENAKQDLLQLKNVISQTEHS YKELMAQNQP KLSLPIRLLPEKDDAGLPPPKATRGCRLHNCFDYSRC PLTSGFPVYVYDS DQFVFGSYLDPLVKQAFQATARANVYVTENADIACLY ILVGEM Database link: O43909 <div style="text-align: right;">  Run BLAST with  Run BLAST with </div>
Positive control	WB: EC109 and HEK-293T whole cell lysates. IHC-P: Human placenta tissue. ICC/IF: HeLa cells.

Properties

Form	Liquid
Storage instructions	Shipped at 4°C. Store at +4°C short term (1-2 weeks). Upon delivery aliquot. Store at -20°C long term. Avoid freeze / thaw cycle.
Storage buffer	pH: 7.40 Preservative: 0.03% Proclin Constituents: 50% Glycerol, PBS
Purity	Protein G purified

Purification notes	Purity >95%.
Clonality	Polyclonal
Isotype	IgG

Applications

Our [Abpromise guarantee](#) covers the use of **ab237484** in the following tested applications.

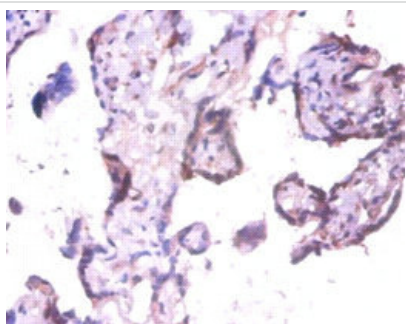
The application notes include recommended starting dilutions; optimal dilutions/concentrations should be determined by the end user.

Application	Abreviews	Notes
WB		1/500 - 1/2000. Detects a band of approximately 105 kDa.
IHC-P		1/20 - 1/200.
ICC/IF		1/50 - 1/200.

Target

Function	Probable glycosyltransferase.
Tissue specificity	Ubiquitous.
Pathway	Glycan metabolism; heparan sulfate biosynthesis.
Sequence similarities	Belongs to the glycosyltransferase 47 family.
Cellular localization	Endoplasmic reticulum membrane.

Images



Paraffin-embedded human placenta tissue stained for EXTL3 using ab237484 at 1/100 dilution in immunohistochemical analysis.

Immunohistochemistry (Formalin/PFA-fixed paraffin-embedded sections) - Anti-EXTL3 antibody (ab237484)



Western blot - Anti-EXTL3 antibody (ab237484)

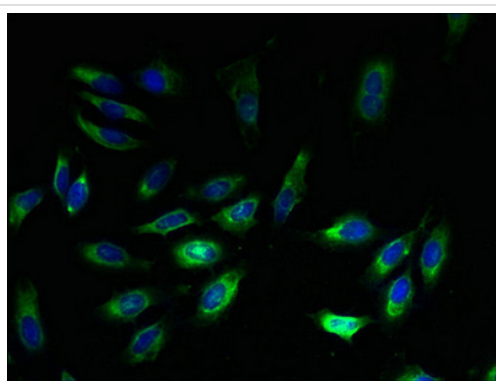
All lanes : Anti-EXTL3 antibody (ab237484) at 1/500 dilution

Lane 1 : EC109 whole cell lysate

Lane 2 : HEK-293T (human epithelial cell line from embryonic kidney transformed with large T antigen) whole cell lysate

Secondary

All lanes : Goat polyclonal to Rabbit IgG at 1/150000 dilution



Immunocytochemistry/ Immunofluorescence - Anti-EXTL3 antibody (ab237484)

HeLa (human epithelial cell line from cervix adenocarcinoma) cells stained for EXTL3 (green) using ab237484 at 1/100 dilution in ICC/IF, followed by Alexa Fluor 488[®] conjugated Goat Anti-Rabbit IgG (H+L).

Please note: All products are "FOR RESEARCH USE ONLY. NOT FOR USE IN DIAGNOSTIC PROCEDURES"

Our Abpromise to you: Quality guaranteed and expert technical support

- Replacement or refund for products not performing as stated on the datasheet
- Valid for 12 months from date of delivery
- Response to your inquiry within 24 hours
- We provide support in Chinese, English, French, German, Japanese and Spanish
- Extensive multi-media technical resources to help you
- We investigate all quality concerns to ensure our products perform to the highest standards

If the product does not perform as described on this datasheet, we will offer a refund or replacement. For full details of the Abpromise, please visit <https://www.abcam.com/abpromise> or contact our technical team.

Terms and conditions

- Guarantee only valid for products bought direct from Abcam or one of our authorized distributors