

Product datasheet

Anti-Extracellular matrix protein 1 antibody [EPR6701] ab126629

Recombinant RabMAb

★ ★ ★ ★ ★ 1 Abreviews 4 References 10 Images

Overview

Product name	Anti-Extracellular matrix protein 1 antibody [EPR6701]
Description	Rabbit monoclonal [EPR6701] to Extracellular matrix protein 1
Host species	Rabbit
Specificity	The rat recommendation is based on the WB results. We do not guarantee IHC-P for rat.
Tested applications	Suitable for: WB, IP, IHC-P, Flow Cyt, ICC/IF
Species reactivity	Reacts with: Rat, Human
Immunogen	Synthetic peptide within Human Extracellular matrix protein 1 aa 100-200. The exact sequence is proprietary. Database link: Q16610
Positive control	WB: MDA MB 435 cell line, Rat heart, Rat kidney, Human skin cell, and A375 cell line lysates. IHC-P: Human breast carcinoma and Human kidney tissues. ICC/IF: A375 cells. IP: A375 cells. Flow Cyt: A375 cells.
General notes	Mouse: We have preliminary internal testing data to indicate this antibody may not react with this species. Please contact us for more information.

This product is a recombinant monoclonal antibody, which offers several advantages including:

- High batch-to-batch consistency and reproducibility
- Improved sensitivity and specificity
- Long-term security of supply
- Animal-free production

For more information [see here](#).

Our RabMAb[®] technology is a patented hybridoma-based technology for making rabbit monoclonal antibodies. For details on our patents, please refer to [RabMAb[®] patents](#).

We are constantly working hard to ensure we provide our customers with best in class antibodies. As a result of this work we are pleased to now offer this antibody in purified format. We are in the process of updating our datasheets. The purified format is designated 'PUR' on our product labels. If you have any questions regarding this update, please contact our Scientific Support team.

Reproducibility is key to advancing scientific discovery and accelerating scientists' next

breakthrough.

Abcam is leading the way with our range of recombinant antibodies, knockout-validated antibodies and knockout cell lines, all of which support improved reproducibility.

We are also planning to innovate the way in which we present recommended applications and species on our product datasheets, so that only applications & species that have been tested in our own labs, our suppliers or by selected trusted collaborators are covered by our Abpromise™ guarantee.

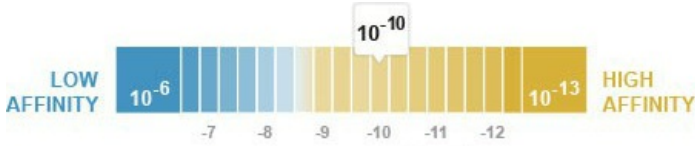
In preparation for this, we have started to update the applications & species that this product is Abpromise guaranteed for.

We are also updating the applications & species that this product has been “predicted to work with,” however this information is not covered by our Abpromise guarantee.

Applications & species from publications and Abreviews that have not been tested in our own labs or in those of our suppliers are not covered by the Abpromise guarantee.

Please check that this product meets your needs before purchasing. If you have any questions, special requirements or concerns, please send us an inquiry and/or contact our Support team ahead of purchase. Recommended alternatives for this product can be found below, as well as customer reviews and Q&As.

Properties

Form	Liquid
Storage instructions	Shipped at 4°C. Store at -20°C. Stable for 12 months at -20°C.
Dissociation constant (K_D)	K _D = 1.20 x 10 ⁻¹⁰ M
	 <p>LOW AFFINITY 10⁻⁶ -7 -8 -9 -10 -11 -12 10⁻¹³ HIGH AFFINITY</p> <p>Learn more about K_D</p>
Storage buffer	pH: 7.20 Preservative: 0.01% Sodium azide Constituents: PBS, 0.05% BSA, 40% Glycerol (glycerin, glycerine)
Purity	Protein A purified
Clonality	Monoclonal
Clone number	EPR6701
Isotype	IgG

Applications

Our [Abpromise guarantee](#) covers the use of **ab126629** in the following tested applications.

The application notes include recommended starting dilutions; optimal dilutions/concentrations should be determined by the end user.

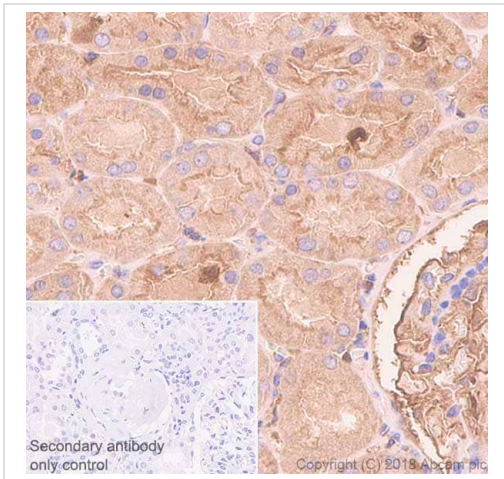
Application	Abreviews	Notes
WB		1/1000 - 1/10000. Predicted molecular weight: 61 kDa.

Application	Abreviews	Notes
IP		1/10 - 1/100.
IHC-P	★ ★ ★ ★ ★	1/100 - 1/250. Perform heat mediated antigen retrieval with citrate buffer pH 6 before commencing with IHC staining protocol. The rat recommendation is based on the WB results. We do not guarantee IHC-P for rat. See IHC antigen retrieval protocols .
Flow Cyt		1/20.
ICC/IF		1/100 - 1/250.

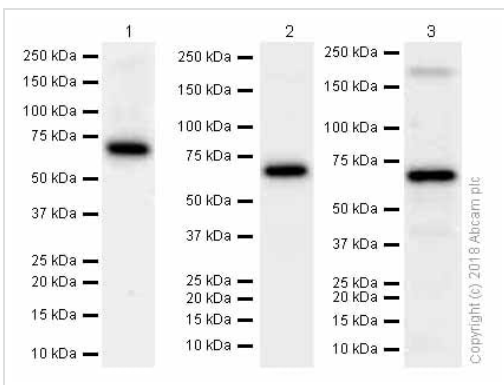
Target

Function	Involved in endochondral bone formation as negative regulator of bone mineralization. Stimulates the proliferation of endothelial cells and promotes angiogenesis. Inhibits MMP9 proteolytic activity.
Tissue specificity	Expressed in breast cancer tissues. Little or no expression observed in normal breast tissues. Expressed in skin; wide expression is observed throughout the dermis with minimal expression in the epidermis.
Involvement in disease	Defects in ECM1 are the cause of lipoid proteinosis (LiP) [MIM:247100]; also known as lipoid proteinosis of Urbach and Wiethe or hyalinosi cutis et mucosae. LiP is a rare autosomal recessive disorder characterized by generalized thickening of skin, mucosae and certain viscera. Classical features include beaded eyelid papules and laryngeal infiltration leading to hoarseness. Histologically, there is widespread deposition of hyaline material and disruption/reduplication of basement membrane.
Cellular localization	Secreted > extracellular space > extracellular matrix.

Images



Immunohistochemistry (Formalin/PFA-fixed paraffin-embedded sections) - Anti-Extracellular matrix protein 1 antibody [EPR6701] (ab126629)



Western blot - Anti-Extracellular matrix protein 1 antibody [EPR6701] (ab126629)

Immunohistochemistry (Formalin/PFA-fixed paraffin-embedded sections) analysis of Human kidney tissue sections labeling Extracellular matrix protein 1 with purified ab126629 at 1:100 dilution (2.01 µg/ml). Heat mediated antigen retrieval was performed using ab93684 (Tris/EDTA buffer, pH 9.0). ImmunoHistoProbe one step HRP Polymer (ready to use) was used as the secondary antibody. Negative control: PBS instead of the primary antibody. Hematoxylin was used as a counterstain.

All lanes : Anti-Extracellular matrix protein 1 antibody [EPR6701] (ab126629) at 1/2000 dilution (Purified)

Lane 1 : A375 (Human malignant melanoma epithelial cell)

Lane 2 : Rat heart lysates

Lane 3 : Rat kidney lysates

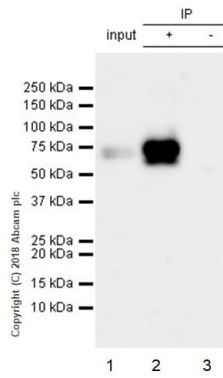
Lysates/proteins at 15 µg per lane.

Secondary

All lanes : Goat Anti-Rabbit IgG H&L (HRP) (ab97051) at 1/20000 dilution

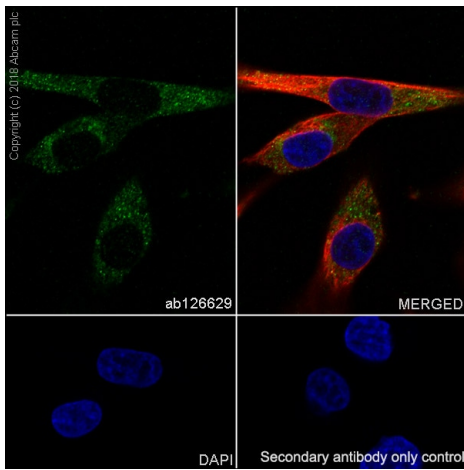
Predicted band size: 61 kDa

Observed band size: 61 kDa



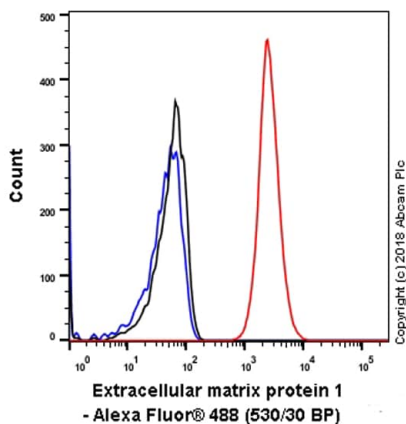
Immunoprecipitation - Anti-Extracellular matrix protein 1 antibody [EPR6701] (ab126629)

ab126629 (purified) at 1:20 dilution (2 μ g) immunoprecipitating Extracellular matrix protein 1 in A375 whole cell lysate.
 Lane 1 (input): A375 (Human malignant melanoma epithelial cell) whole cell lysate 10 μ g
 Lane 2 (+): ab126629 & A375 whole cell lysate
 Lane 3 (-): Rabbit monoclonal IgG (ab172730) instead of ab126629 in A375 whole cell lysate
 For western blotting, VeriBlot for IP Detection Reagent (HRP) (ab131366) was used for detection at 1:1000 dilution.
 Blocking and diluting buffer: 5% NFDm/TBST.



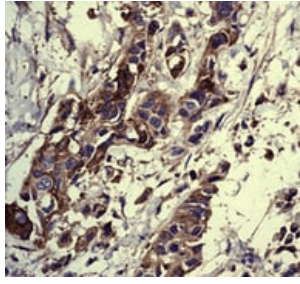
Immunocytochemistry/ Immunofluorescence - Anti-Extracellular matrix protein 1 antibody [EPR6701] (ab126629)

Immunocytochemistry/ Immunofluorescence analysis of A375 (Human malignant melanoma epithelial cell) cells labeling Extracellular matrix protein 1 with purified ab126629 at 1:100 dilution (2.0 μ g/ml). Cells were fixed in 4% Paraformaldehyde and permeabilized with 0.1% tritonX-100. Cells were counterstained with Ab195889 Anti-alpha Tubulin antibody [DM1A] - Microtubule Marker (Alexa Fluor[®] 594) 1:200 (2.5 μ g/ml). Goat anti rabbit IgG (Alexa Fluor[®] 488, ab150077) was used as the secondary antibody at 1:1000 (2 μ g/ml) dilution. DAPI nuclear counterstain. PBS instead of the primary antibody was used as the secondary antibody only control.



Flow Cytometry - Anti-Extracellular matrix protein 1 antibody [EPR6701] (ab126629)

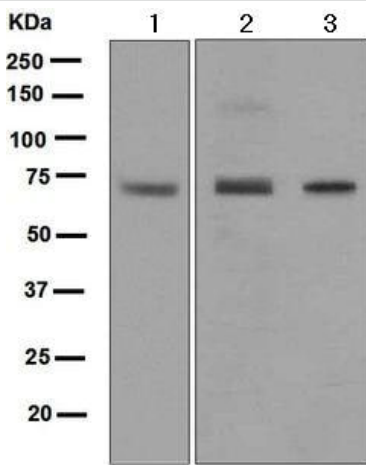
Flow Cytometry analysis of A375 (Human malignant melanoma epithelial cell) cells labeling Extracellular matrix protein 1 with purified ab126629 at 1:20 dilution (10 μ g/ml) (red). Cells were fixed with 4% Paraformaldehyde. A Goat anti rabbit IgG (Alexa Fluor[®] 488, ab150077) secondary antibody was used at 1:2000. Isotype control - Rabbit monoclonal IgG (Black). Unlabeled control - Cell without incubation with primary antibody and secondary antibody (Blue).



Immunohistochemistry (Formalin/PFA-fixed paraffin-embedded sections) - Anti-Extracellular matrix protein 1 antibody [EPR6701] (ab126629)

ab126629, at 1/100, staining Extracellular matrix protein 1 in formalin fixed, paraffin embedded Human breast carcinoma tissue by Immunohistochemistry.

Heat mediated antigen retrieval was performed with citrate buffer pH 6 before commencing with IHC staining protocol.



Western blot - Anti-Extracellular matrix protein 1 antibody [EPR6701] (ab126629)

All lanes : Anti-Extracellular matrix protein 1 antibody [EPR6701] (ab126629) at 1/1000 dilution

Lane 1 : MDA MB 435 cell line lysate

Lane 2 : Human skin cell lysate

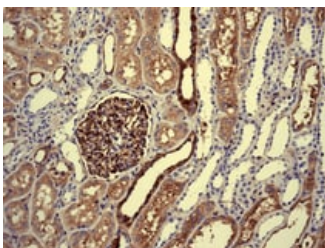
Lane 3 : A375 cell line lysate

Lysates/proteins at 10 µg per lane.

Secondary

All lanes : Goat anti-rabbit HRP conjugated antibody at 1/2000 dilution

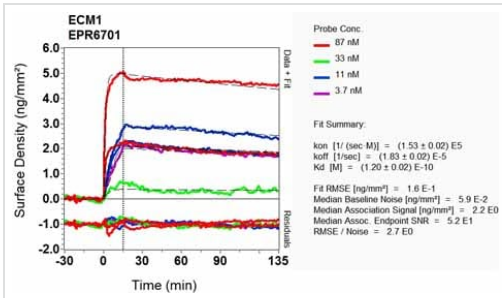
Predicted band size: 61 kDa



Immunohistochemistry (Formalin/PFA-fixed paraffin-embedded sections) - Anti-Extracellular matrix protein 1 antibody [EPR6701] (ab126629)

ab126629, at 1/100, staining Extracellular matrix protein 1 in formalin fixed, paraffin embedded Human kidney tissue by Immunohistochemistry.

Heat mediated antigen retrieval was performed with citrate buffer pH 6 before commencing with IHC staining protocol.



SPR Scanning - Anti-Extracellular matrix protein 1 antibody [EPR6701] (ab126629)

Equilibrium dissociation constant (K_D)

Learn more about K_D

[Click here to learn more about \$K_D\$](#)

Why choose a recombinant antibody?

Research with confidence
Consistent and reproducible results

Long-term and scalable supply
Recombinant technology

Success from the first experiment
Confirmed specificity

Ethical standards compliant
Animal-free production

Anti-Extracellular matrix protein 1 antibody [EPR6701] (ab126629)

Please note: All products are "FOR RESEARCH USE ONLY. NOT FOR USE IN DIAGNOSTIC PROCEDURES"

Our Abpromise to you: Quality guaranteed and expert technical support

- Replacement or refund for products not performing as stated on the datasheet
- Valid for 12 months from date of delivery
- Response to your inquiry within 24 hours
- We provide support in Chinese, English, French, German, Japanese and Spanish
- Extensive multi-media technical resources to help you
- We investigate all quality concerns to ensure our products perform to the highest standards

If the product does not perform as described on this datasheet, we will offer a refund or replacement. For full details of the Abpromise, please visit <https://www.abcam.com/abpromise> or contact our technical team.

Terms and conditions

- Guarantee only valid for products bought direct from Abcam or one of our authorized distributors