




Product datasheet

Anti-FABP-1 antibody ab223653

1 Image

Overview

Product name	Anti-FABP-1 antibody
Description	Goat polyclonal to FABP-1
Host species	Goat
Tested applications	Suitable for: WB
Species reactivity	Reacts with: Human Predicted to work with: Mouse, Rat, Rabbit, Chicken, Cow, Pig, Cynomolgus monkey, Orangutan, Xenopus tropicalis 
Immunogen	Synthetic peptide corresponding to Human FABP-1 aa 360-373 (Cysteine residue). Sequence: C-SNLKKEGSTHNWQH Database link: P00505  Run BLAST with  Run BLAST with
Positive control	WB: Human liver tissue lysate.
General notes	Previously labelled as GOT2.

Properties

Form	Liquid
Storage instructions	Shipped at 4°C. Store at +4°C short term (1-2 weeks). Upon delivery aliquot. Store at -20°C long term. Avoid freeze / thaw cycle.
Storage buffer	pH: 7.3 Preservative: 0.02% Sodium azide Constituents: 0.5% BSA, Tris buffered saline
Purity	Immunogen affinity purified
Purification notes	Purified from goat serum by ammonium sulphate precipitation followed by antigen affinity chromatography using the immunizing peptide.
Clonality	Polyclonal
Isotype	IgG

Applications

Our [Abpromise guarantee](#) covers the use of **ab223653** in the following tested applications.

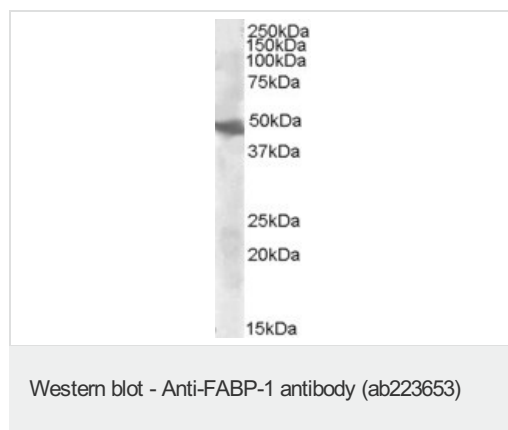
The application notes include recommended starting dilutions; optimal dilutions/concentrations should be determined by the end user.

Application	Abreviews	Notes
WB		Use a concentration of 0.3 - 1 µg/ml. Detects a band of approximately 48 kDa (predicted molecular weight: 48 kDa).

Target

Function	Plays a key role in amino acid metabolism. Important for metabolite exchange between mitochondria and cytosol. Facilitates cellular uptake of long-chain free fatty acids.
Sequence similarities	Belongs to the class-I pyridoxal-phosphate-dependent aminotransferase family.
Cellular localization	Mitochondrion matrix. Cell membrane. Exposure to alcohol promotes translocation to the cell membrane.

Images



Anti-FABP-1 antibody (ab223653) at 0.3 µg/ml + Human liver tissue lysate at 35 µg

Developed using the ECL technique.

Performed under reducing conditions.

Predicted band size: 48 kDa

Primary incubation was 1 hour

Please note: All products are "FOR RESEARCH USE ONLY. NOT FOR USE IN DIAGNOSTIC PROCEDURES"

Our Abpromise to you: Quality guaranteed and expert technical support

- Replacement or refund for products not performing as stated on the datasheet
- Valid for 12 months from date of delivery
- Response to your inquiry within 24 hours
- We provide support in Chinese, English, French, German, Japanese and Spanish
- Extensive multi-media technical resources to help you
- We investigate all quality concerns to ensure our products perform to the highest standards

If the product does not perform as described on this datasheet, we will offer a refund or replacement. For full details of the Abpromise, please visit <https://www.abcam.com/abpromise> or contact our technical team.

Terms and conditions

- Guarantee only valid for products bought direct from Abcam or one of our authorized distributors